

# OFFICE SPACE FOR LEASE: DAVIS PROFESSIONAL BUILDING



**4910 S Isabel Drive  
Sioux Falls, SD 57108**

**AVAILABLE:** 2,604+/- RSF

2,335+/-USF

**PRICE:** \$18.50 PSF NNN

**ZONING:** Office

**OCCUPANCY:** Summer 2015

**Estimated 2015 NNN**

\$4.75 PSF

**Tenant Improvement Allowance**

\$30.00



**For more information,  
please contact:**

**Kristen Zueger, SIOR**

p: 605.271.2234

c: 605.376.1903

e: [Kristen@VBCLink.com](mailto:Kristen@VBCLink.com)



This information has been secured from sources we believe to be reliable, but we make no representation or warranties, expressed or implied, as to the accuracy of the information. All references to age, square footage, income, and expenses are approximate. Buyers or Lessors should conduct their own independent investigations and rely only on those results.

## PROPERTY INFORMATION

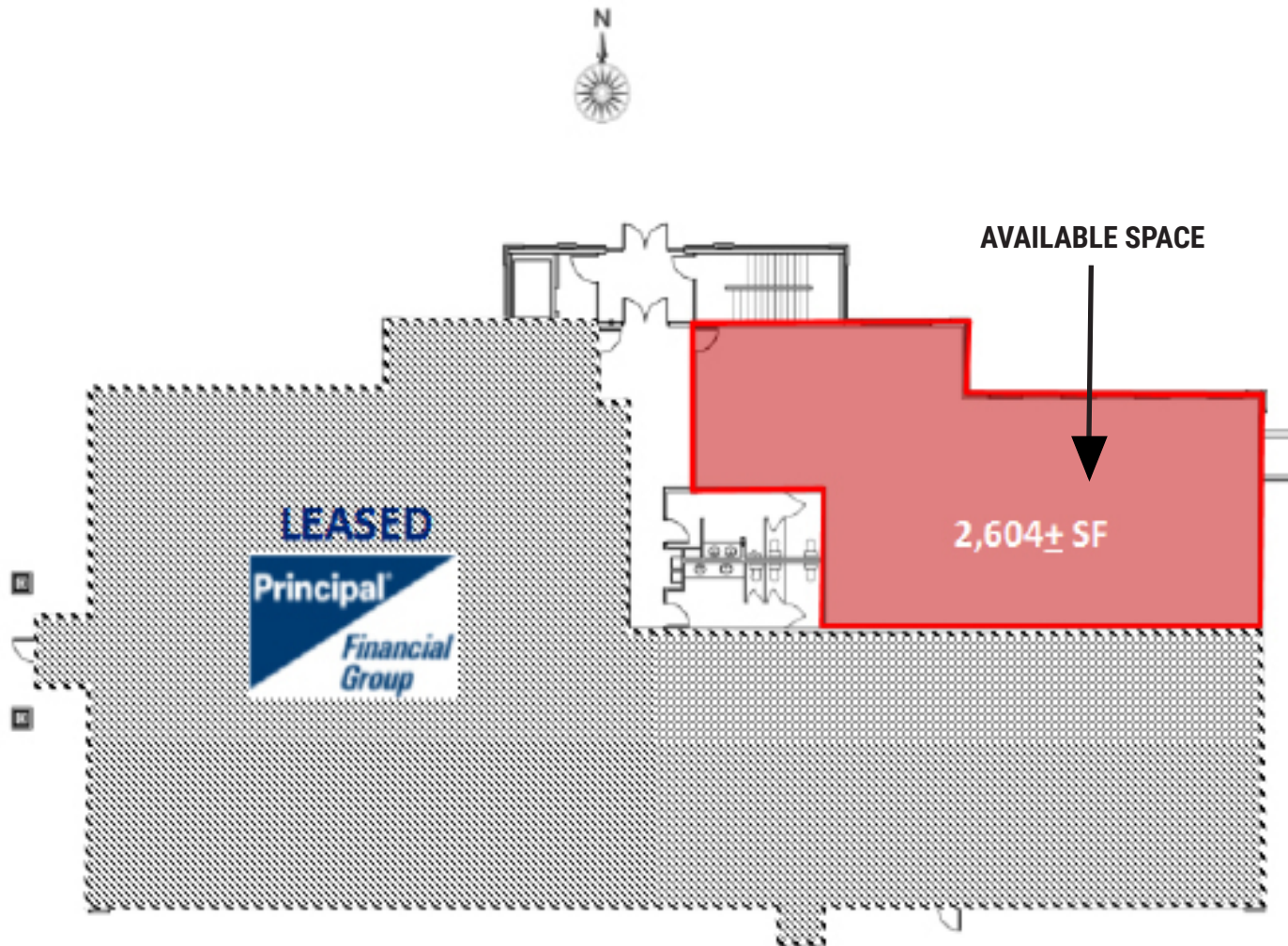
- Main floor Class A office space in the Prairie Tree Office Park, conveniently located near the intersection of 57th Street and Western Avenue in southern Sioux Falls.
- New construction.
- Indoor and surface parking available.
- Building and monument signage available.
- Neighbors include Zimmer Davis, Principal Financial, Memorial Lutheran Church, MetaBank, Starbucks, JJ's Wine & Spirits, Claims Associates, Electric Pulp, The Gas Stop, and The Bridges at 57th Street, among others.

REAL ESTATE DEVELOPMENT | BROKERAGE | INVESTMENT  
MANAGEMENT | COMMERCIAL CONSTRUCTION | ENGINEERING | ARCHITECTURE

2571 S Westlake Dr, Ste 100, Sioux Falls, SD 57106 | o: 605.361.8211 | f: 605.361.8052 | w: [VBCLink.com](http://VBCLink.com)

# OFFICE SPACE FOR LEASE: DAVIS PROFESSIONAL BUILDING

4910 S Isabel Drive  
Sioux Falls, SD 57108



Superior location in  
Prairie Tree Office  
Park, with easy access  
to major arterial roads.

**For more information,  
please contact:**

**Kristen Zueger, SIOR**

p: 605.271.2234

c: 605.376.1903

e: [Kristen@VBCLink.com](mailto:Kristen@VBCLink.com)



**VanBuskirk**  
COMPANIES

This information has been secured from sources we believe to be reliable, but we make no representation or warranties, expressed or implied, as to the accuracy of the information. All references to age, square footage, income, and expenses are approximate. Buyers or Lessors should conduct their own independent investigations and rely only on those results.

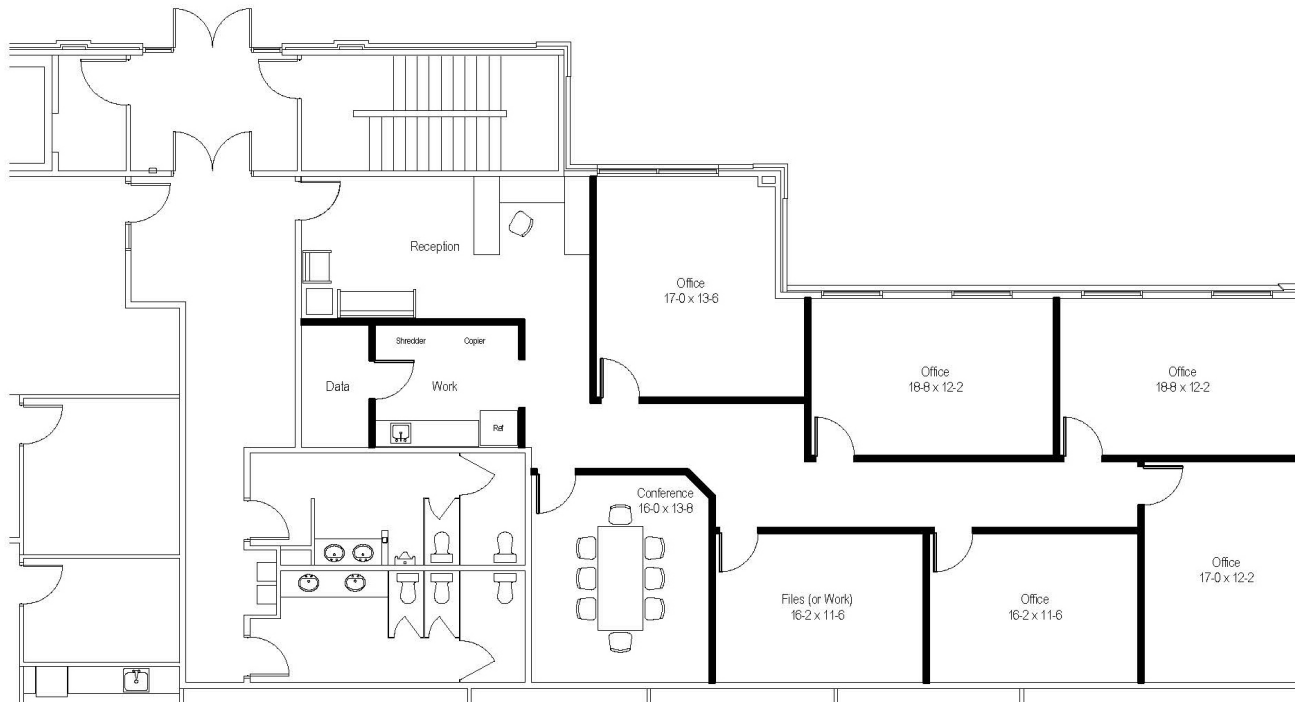
REAL ESTATE DEVELOPMENT | BROKERAGE | INVESTMENT  
MANAGEMENT | COMMERCIAL CONSTRUCTION | ENGINEERING | ARCHITECTURE

2571 S Westlake Dr, Ste 100, Sioux Falls, SD 57106 | o: 605.361.8211 | f: 605.361.8052 | w: [VBCLink.com](http://VBCLink.com)

# OFFICE SPACE FOR LEASE: DAVIS PROFESSIONAL BUILDING

4910 S Isabel Drive  
Sioux Falls, SD 57108

## SUITE LAYOUT EXAMPLE



*City of Sioux Falls*

**For more information,  
please contact:**

**Kristen Zueger, SIOR**

p: 605.271.2234

c: 605.376.1903

e: [Kristen@VBCLink.com](mailto:Kristen@VBCLink.com)



**VanBuskirk**  
COMPANIES

This information has been secured from sources we believe to be reliable, but we make no representation or warranties, expressed or implied, as to the accuracy of the information. All references to age, square footage, income, and expenses are approximate. Buyers or Lessors should conduct their own independent investigations and rely only on those results.

REAL ESTATE DEVELOPMENT | BROKERAGE | INVESTMENT  
MANAGEMENT | COMMERCIAL CONSTRUCTION | ENGINEERING | ARCHITECTURE

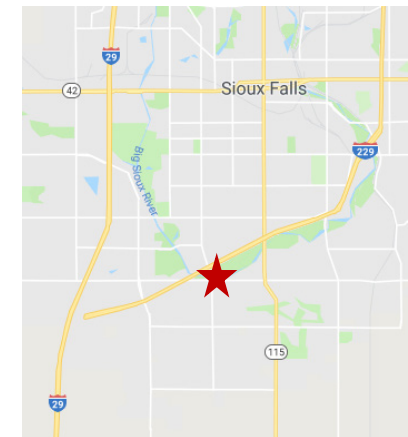
2571 S Westlake Dr, Ste 100, Sioux Falls, SD 57106 | o: 605.361.8211 | f: 605.361.8052 | w: [VBCLink.com](http://VBCLink.com)

# OFFICE SPACE FOR LEASE: DAVIS PROFESSIONAL BUILDING

4910 S Isabel Drive  
Sioux Falls, SD 57108



**DAVIS PROFESSIONAL  
BUILDING**



**For more information,  
please contact:**

**Kristen Zueger, SIOR**

p: 605.271.2234

c: 605.376.1903

e: [Kristen@VBCLink.com](mailto:Kristen@VBCLink.com)



This information has been secured from sources we believe to be reliable, but we make no representation or warranties, expressed or implied, as to the accuracy of the information. All references to age, square footage, income, and expenses are approximate. Buyers or Lessors should conduct their own independent investigations and rely only on those results.

REAL ESTATE DEVELOPMENT | BROKERAGE | INVESTMENT  
MANAGEMENT | COMMERCIAL CONSTRUCTION | ENGINEERING | ARCHITECTURE

2571 S Westlake Dr, Ste 100, Sioux Falls, SD 57106 | o: 605.361.8211 | f: 605.361.8052 | w: [VBCLink.com](http://VBCLink.com)