



# FOSSFIELDS

## Highway 100 Retail Development



### size

Retail anchor sites ranging from 7 to 15 acres with frontage outlots available



### price

Contact Broker



### zoning

Property is zoned C-4 Commercial, the highest commercial zoning available, with unlimited building sizes permitted.



### highway 100

Foss Fields Development is located on SD Highway 100, a 4-lane thoroughfare connecting Sioux Falls to Interstate 90. Highway 100 will carry 55,000+ cars per day!



### location

Foss Fields fronts both sides of Highway 100, with nearly 1 mile of frontage. Development is designed with 4 corners of large retail at the signalized intersection of East 6th Street and Highway 100.



### co-tenancy

Target, Walmart, Menards, Kohls, Century Theatres, Burlington, Petsmart, Ulta Beauty, Buffalo Wild Wings and many more!

A C-Lemme Development, offered by VanBuskirk Companies

Information deemed reliable but not guaranteed.



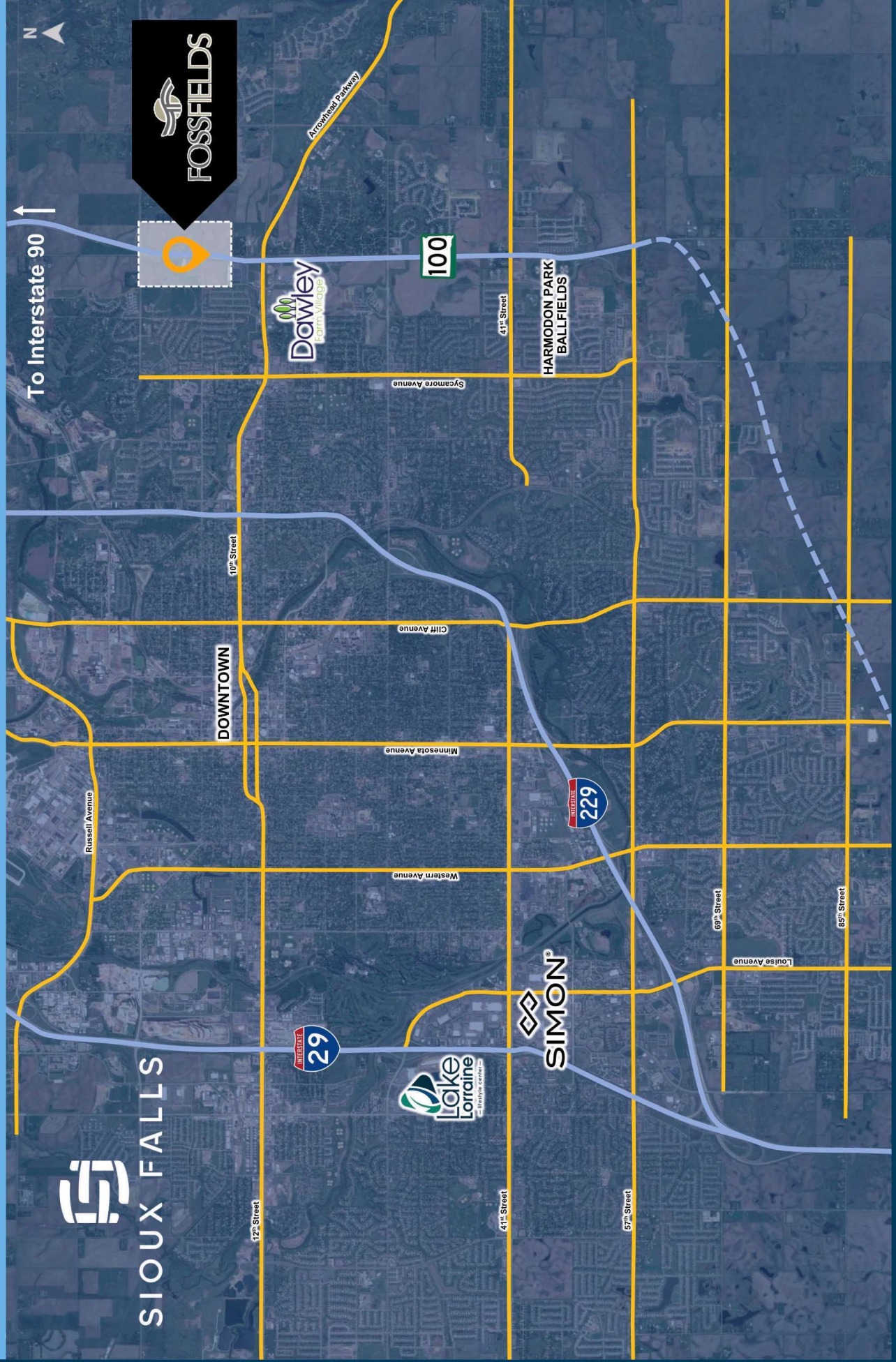
Lake Lorraine | 2571 Westlake Drive #100  
Sioux Falls, South Dakota 57106  
VBCLink.com | 605.361.8211



**605.376.0127**  
Ryan@VBCLink.com



# CITY MAP





# HIGHWAY 100 MAP

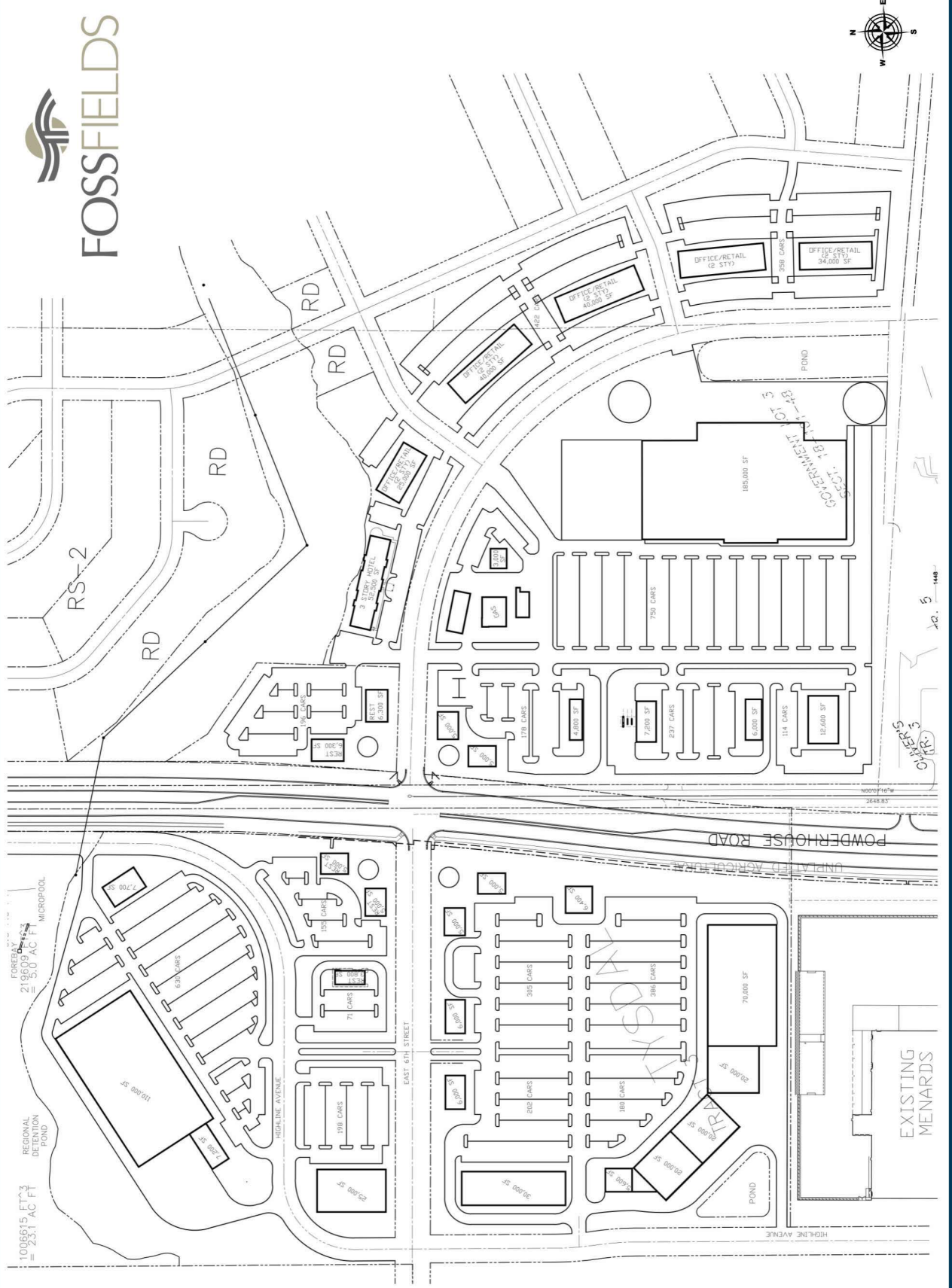




# EASTSIDE RESIDENTIAL GROWTH IN PROGRESS









# DEVELOPMENT OVERVIEW



# FOSSFIELDS