

CANTERBURY HEIGHTS MULTIFAMILY LAND

5610 E MADISON STREET SIOUX FALLS SD 57110

FOR SALE



LOCATED IN GROWING NORTHEAST NEIGHBORHOOD



SIZE

151,436 SF
(3.48 Acres)



PRICE

\$4.00 PSF

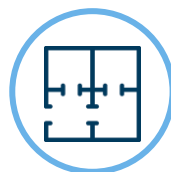


LOCATION

Located 1 mile east of Washington High School & 1.9 miles north of Menards & 2.4 miles north of Walmart & Dawley Farm Village shopping mall.

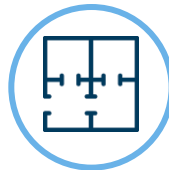
NEIGHBORS

Wells Fargo, Menards, Perkins, Walmart, Dawley Farm Village Shopping Center, new Brandon Elementary School, Washington High School, Anne Sullivan Elementary School & more.,



LAYOUT

Well maintained & growing northeast Sioux Falls neighborhood, with newer homes & beautiful landscapes.



ZONING

RA-2, which is for low-density residential use. 3 stories, 45' height, 48 units.



Information deemed reliable but not guaranteed.



605.361.8211 | VBCcommercial.com

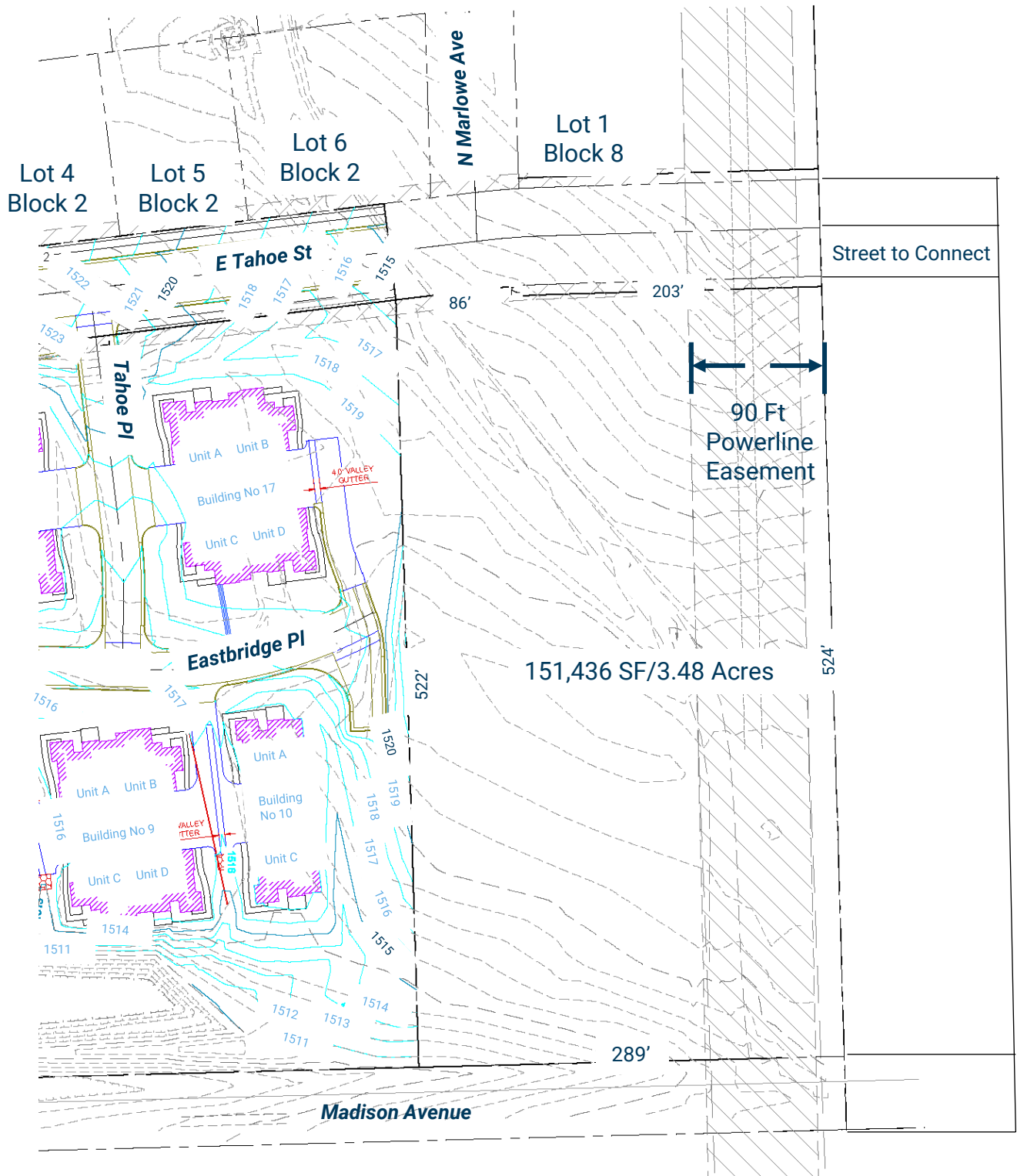
2571 S Westlake Dr #100 Sioux Falls SD 57106

STEVE
VAN BUSKIRK

605.366.0939

steve@vbclink.com

TOPOGRAPHICAL MAP



605.361.8211 | VBCcommercial.com

2571 S Westlake Dr #100 Sioux Falls SD 57106

STEVE
VAN BUSKIRK
605.366.0939
steve@vbclink.com



AREA MAP

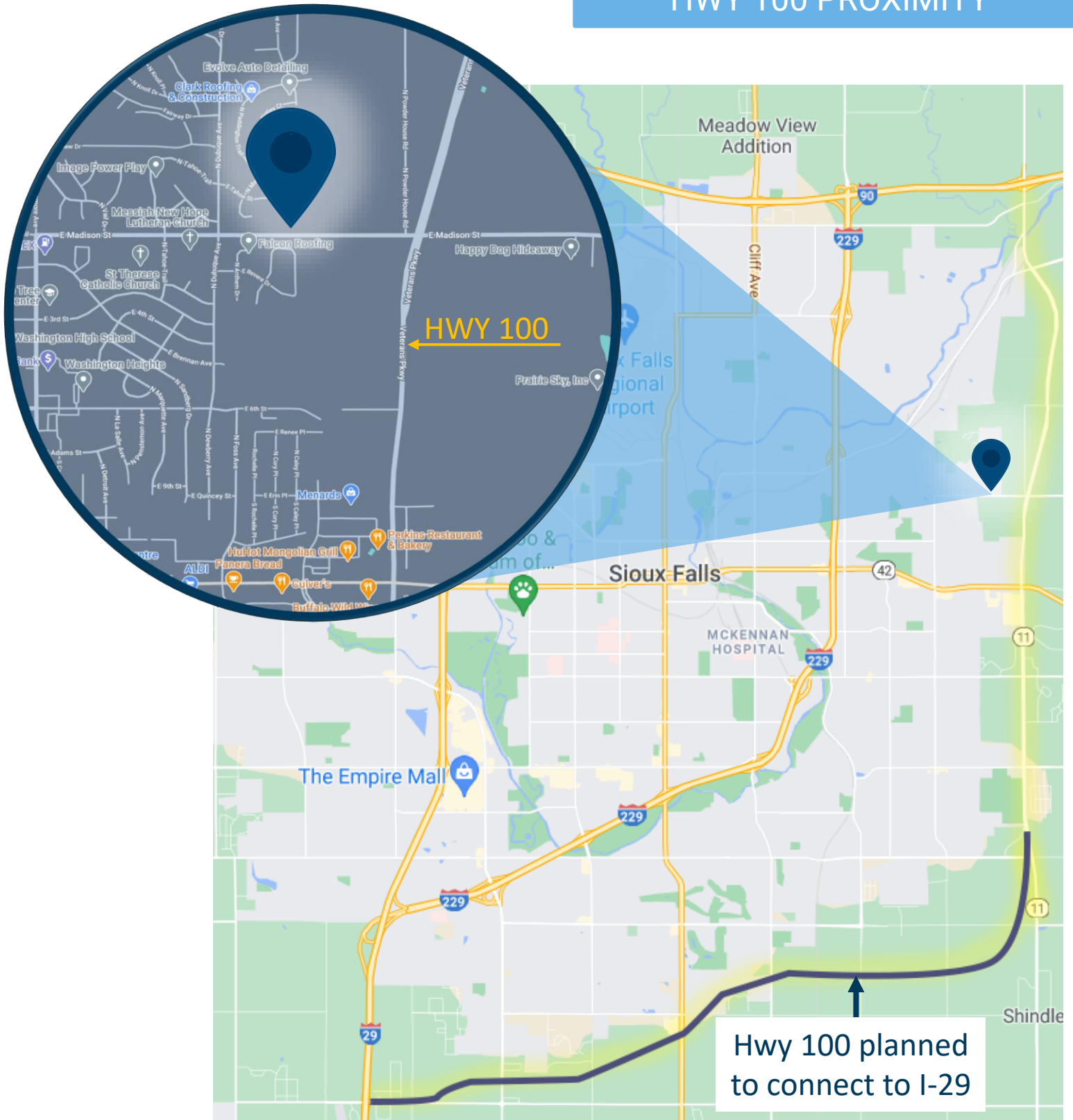


605.361.8211 | VBCcommercial.com

2571 S Westlake Dr #100 Sioux Falls SD 57106

STEVE
VAN BUSKIRK
605.366.0939
steve@vbclink.com

HWY 100 PROXIMITY



605.361.8211 | VBCcommercial.com

2571 S Westlake Dr #100 Sioux Falls SD 57106

STEVE
VAN BUSKIRK
605.366.0939
steve@vbclink.com