

REMINGTON RETAIL CENTER

2312 WEST 69TH STREET SUITE 150 SIOUX FALLS SD 57108

FOR
LEASE



1,415-sqft Endcap For Lease



SIZE

1,415 SF



PRICE

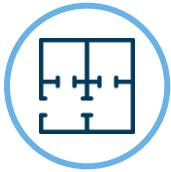
\$18.00 PSF

\$7.82 PSF NNN



LOCATION

Conveniently located on 69th Street just one block west of Western Avenue. Close proximity to I-229 centered between Western & Louise Avenue.



LAYOUT

This space has grand windows with great natural light. Exposed painted ceilings give this space a contemporary feel. Suite 150 is complete with one office, two dressing rooms, a private restroom and a storage area.



TRAFFIC

S Western Ave :
Average of 11,630 cars p/day

W 69th Street :
Average of 16,071 cars p/day



COTENANCY

DaVita, A Perfect 10 Nail & Beauty Bar, Evolve Interior Design, Pita Pit, Form Fitness, 22Ten Kitchen Cocktails, Kum & Go, Avera McGreevy Clinic, Heather Ridge Pet Hospital & more.

Information deemed reliable but not guaranteed.



605.361.8211 | VBClink.com

2571 S Westlake Dr #100 Sioux Falls SD 57106



605.351.5512

autumn.kaufhold@vbclink.com

AREA RETAIL MAP



605.361.8211 | VBClink.com

2571 S Westlake Dr #100 Sioux Falls SD 57106



605.351.5512

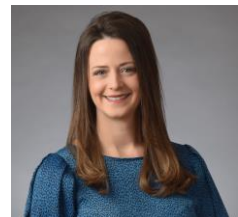
autumn.kaufhold@vbclink.com

SITE PLAN



605.361.8211 | VBclick.com

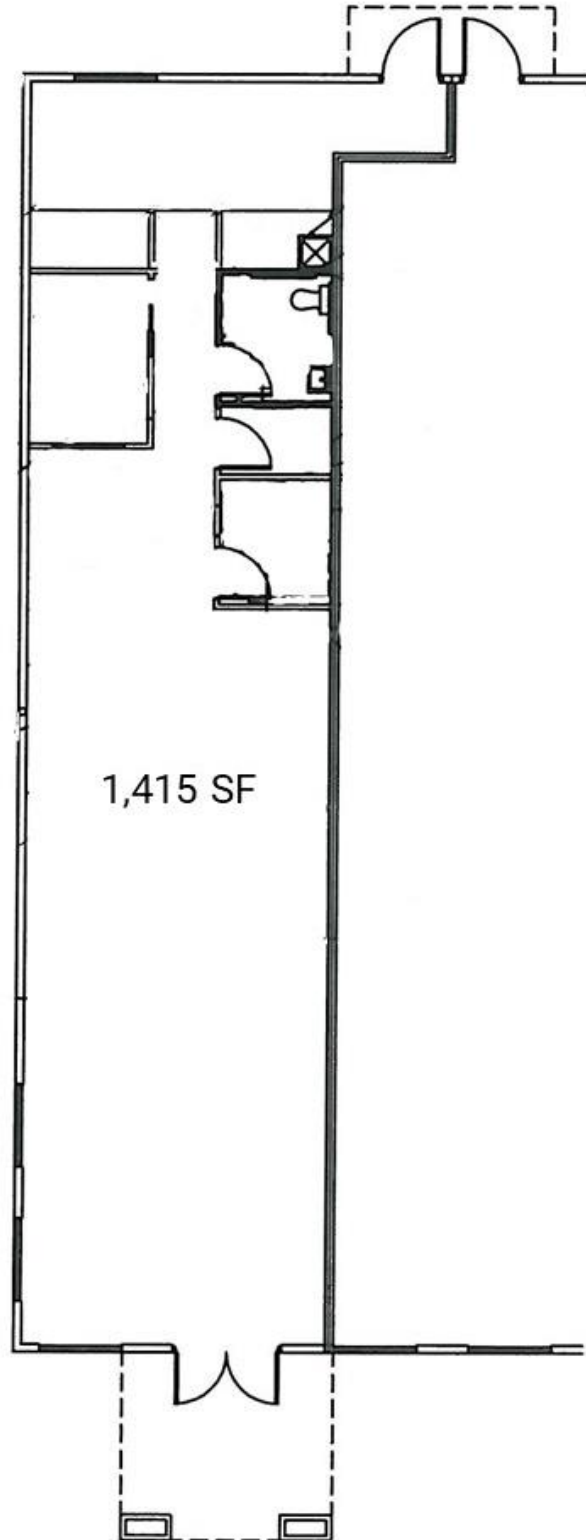
2571 S Westlake Dr #100 Sioux Falls SD 57106



605.351.5512

autumn.kaufhold@vbclick.com

FLOOR PLAN



1,415 SF



605.361.8211 | VBclick.com

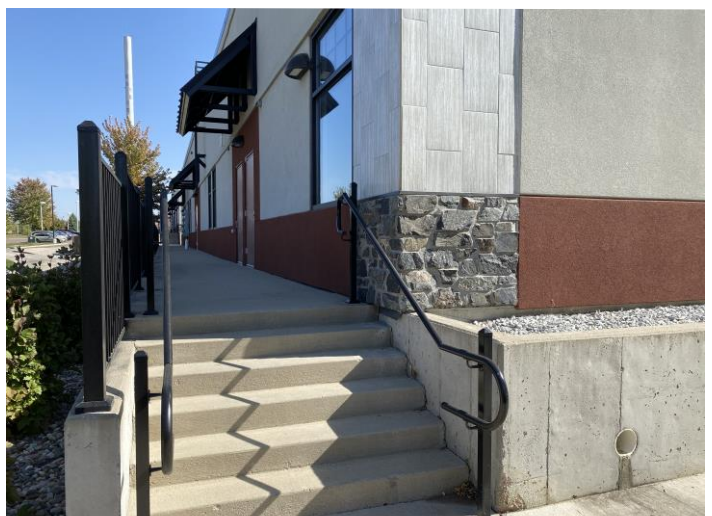
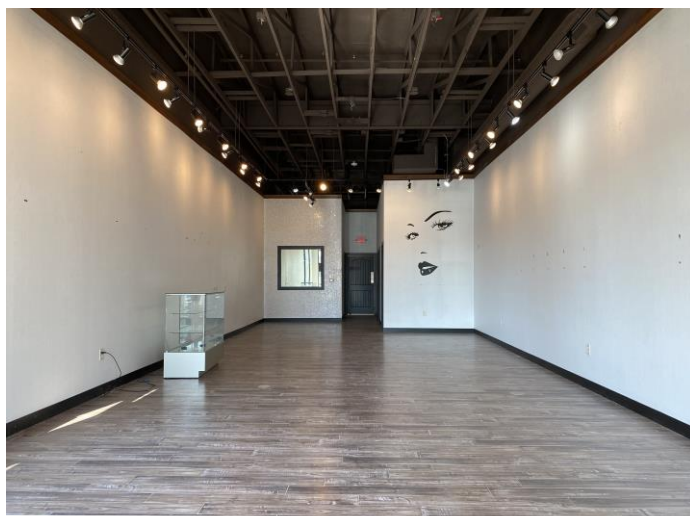
2571 S Westlake Dr #100 Sioux Falls SD 57106



605.351.5512

autumn.kaufhold@vbclick.com

PHOTO GALLERY



605.361.8211 | VBClink.com
2571 S Westlake Dr #100 Sioux Falls SD 57106



605.351.5512
autumn.kaufhold@vbclink.com