

HIGH POINTE ESTATES COMMERCIAL LAND

271ST STREET & MAIN AVENUE TEA SD 57064

**FOR
SALE**



Highly Visible Land On Tea's Busy 271st Street & Main Street



SIZE

1.9 Acres
(82,764 SF)



PRICE

\$4.50 PSF



LOCATION

This prime location is at the corner of 271st St & Main St. Tea is just 5.9 miles South of W 41st St in Sioux Falls.



ZONING

Commercial



POPULATION

Tea is one the fastest growing cities in South Dakota, with a 2020 estimated population of 6,444 & growing.



NEIGHBORS

Tea Tots Childcare Center, Risen Savior Lutheran Church, Stone Holding Co. Showroom, Bath Fitter, Dakota Traffic Services, ProChem Dynamics & more.

Information deemed reliable but not guaranteed.



**STEVE
VAN BUSKIRK**
605.366.0939
steve@vbclink.com

605.361.8211 | VBCcommercial.com

2571 S Westlake Dr #100 Sioux Falls SD 57106

AREA MAP



605.361.8211 | VBCcommercial.com

2571 S Westlake Dr #100 Sioux Falls SD 57106

STEVE
VAN BUSKIRK
605.366.0939
steve@vbclink.com

SUBJECT SITE

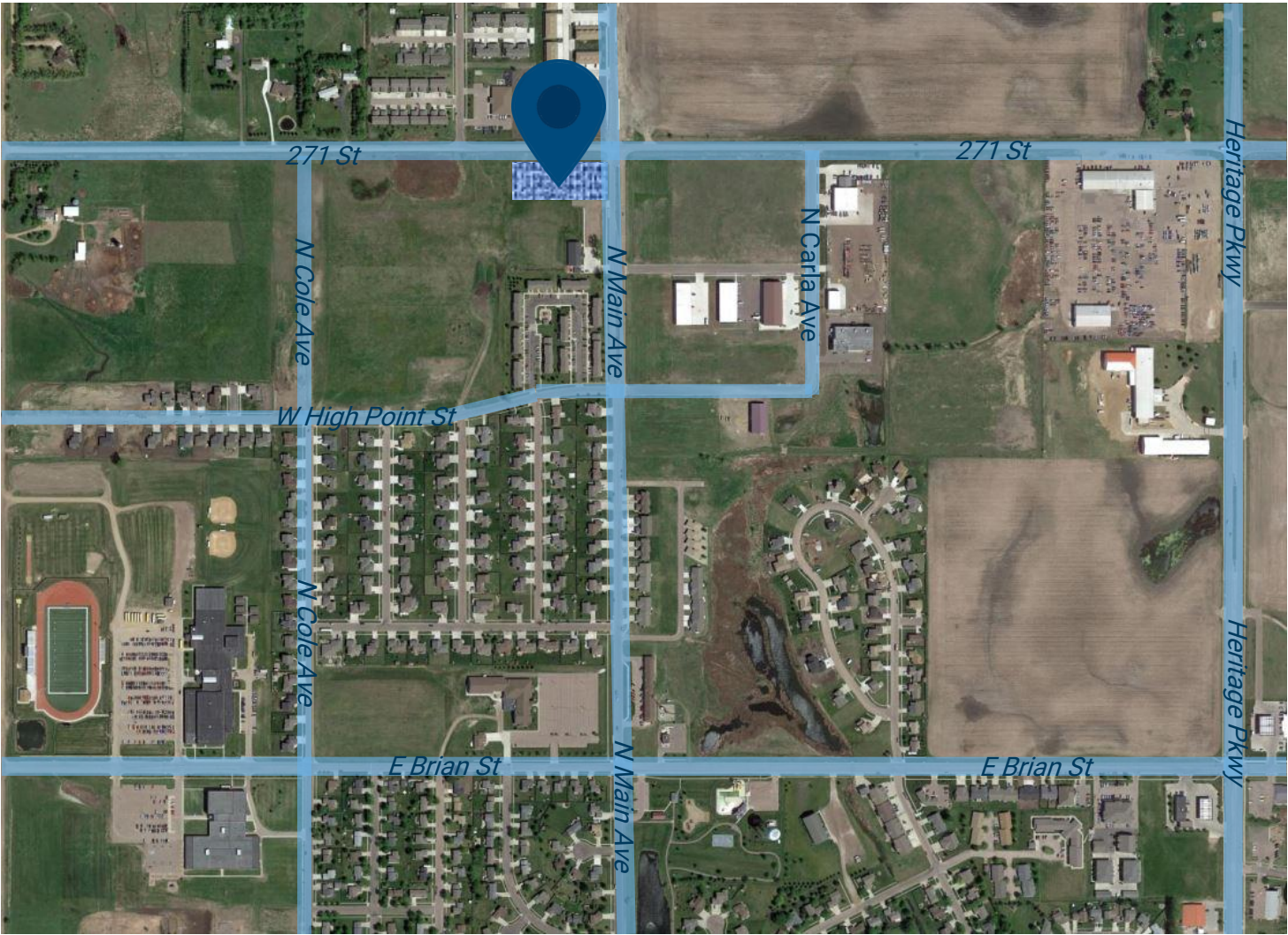


605.361.8211 | VBCcommercial.com

2571 S Westlake Dr #100 Sioux Falls SD 57106

STEVE
VAN BUSKIRK
605.366.0939
steve@vbclink.com

SITE LOCATION IN TEA

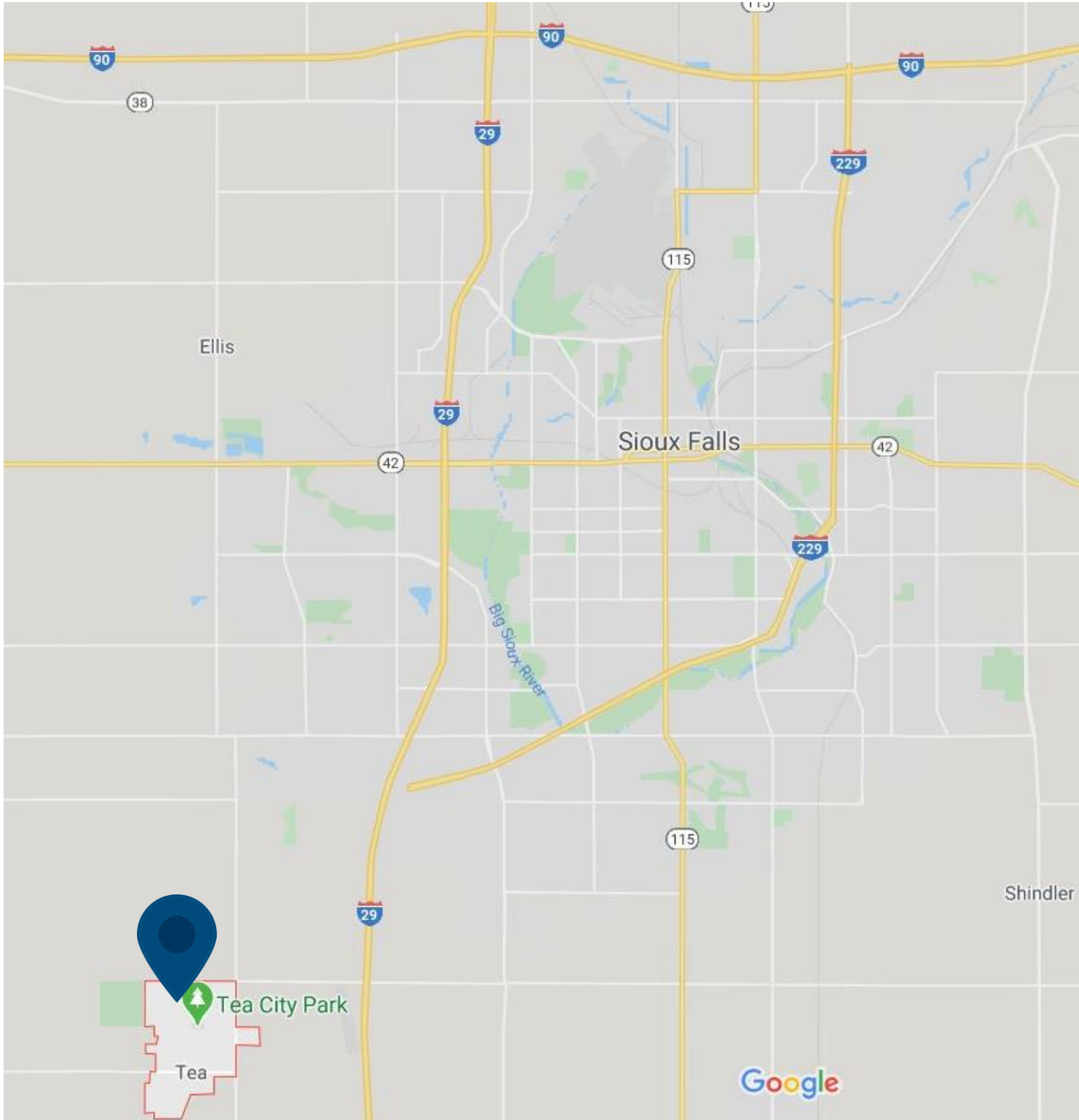


605.361.8211 | VBCcommercial.com

2571 S Westlake Dr #100 Sioux Falls SD 57106

STEVE
VAN BUSKIRK
605.366.0939
steve@vbclink.com

LOCATION MAP FROM SIOUX FALLS



605.361.8211 | VBCcommercial.com

2571 S Westlake Dr #100 Sioux Falls SD 57106

STEVE
VAN BUSKIRK
605.366.0939
steve@vbclink.com