

WM

WESTOWN MARKETPLACE

41ST STREET & ELLIS ROAD

New Retail Development | Lots for Sale



41st Street + Ellis Road
Sioux Falls, SD 57106



size

Commercial lots ranging from 1.4 - 3.6 acres



price

See attached pricing



zoning

Entire site is zoned C-3 Commercial



population

50,000 people live in Sioux Falls WEST of Interstate 29!



location

New retail development located on the NE corner of 41st Street and Ellis Road in West Sioux Falls.



co-tenancy

Sanford Clinic, Family Wellness, Shenanigan's Bar & Grill, ACE Hardware, Walgreens, Dollar General, Frontier Elementary School, Memorial Middle School, Roosevelt High School

Property is co-listed with Harr-Lemme Real Estate. Information deemed reliable but not guaranteed.

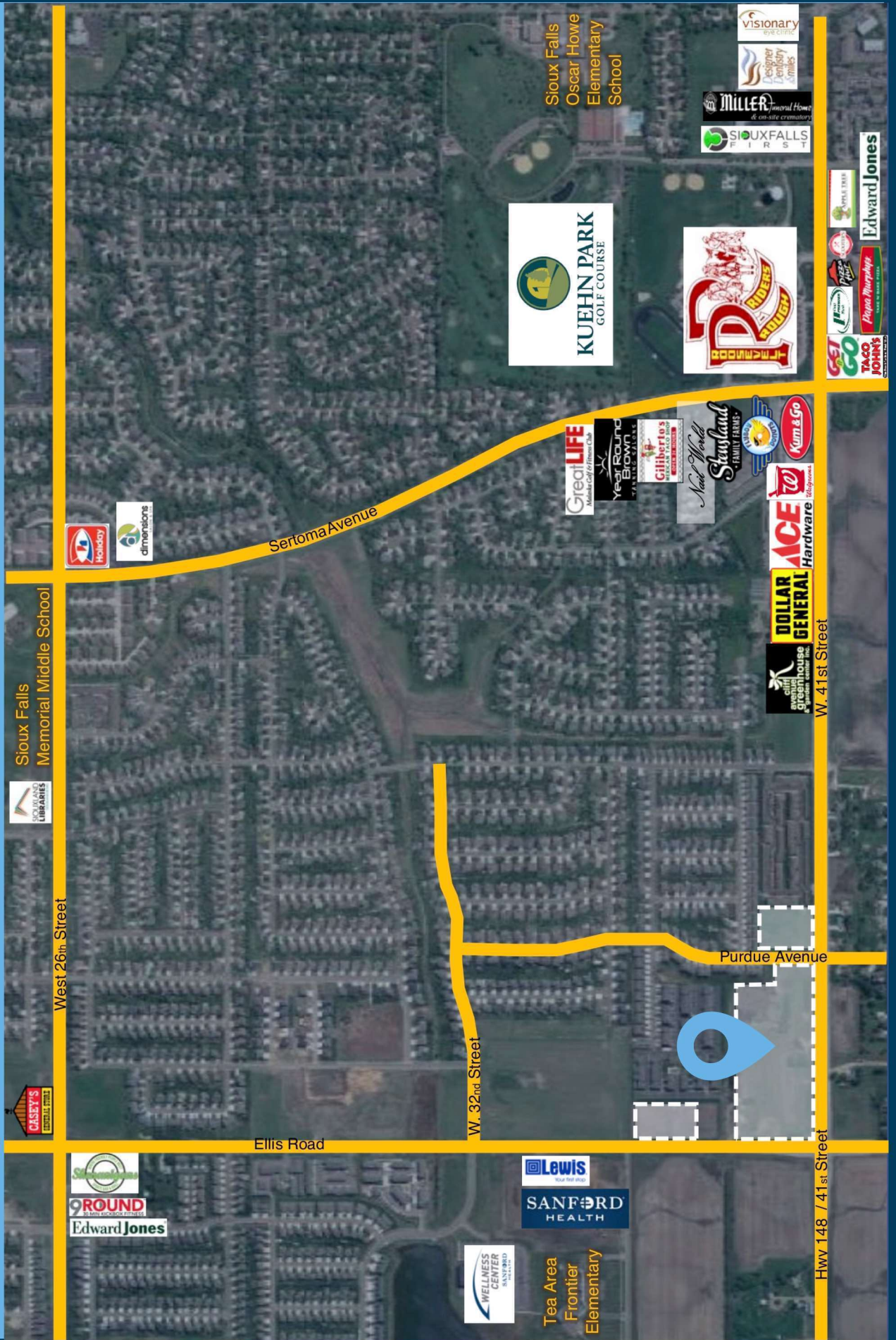


Lake Lorraine | 2571 Westlake Drive #100
Sioux Falls, South Dakota 57106
VBclink.com | 605.361.8211



605.376.0127
Ryan@VBclink.com

AREA MAP





LOT 2
8,630. SF±

S. KINDERBROOK AVE.

WEST LOBELIA STREET

WEST COLUMBIA PLACE

W. SNAPODRAGON STREET

S. PURDUE AVENUE

W. BOULDER CREEK PLACE

W. BOULDER C

SOLD

SOLD

SOLD

UNDER CONTRACT

UNDER CONTRACT

FAREWAY
MEAT & GROCERY

SOLD

UNDER CONTRACT

SOLD

UNDER CONTRACT

DOLLAR TREE

SOLD

SOLD

SOLD

RETAIL
17,300 SF
1.75 AC.

RETAIL
6,600 SF
1.5 AC.

RETAIL
3,200 SF
1.4 AC.

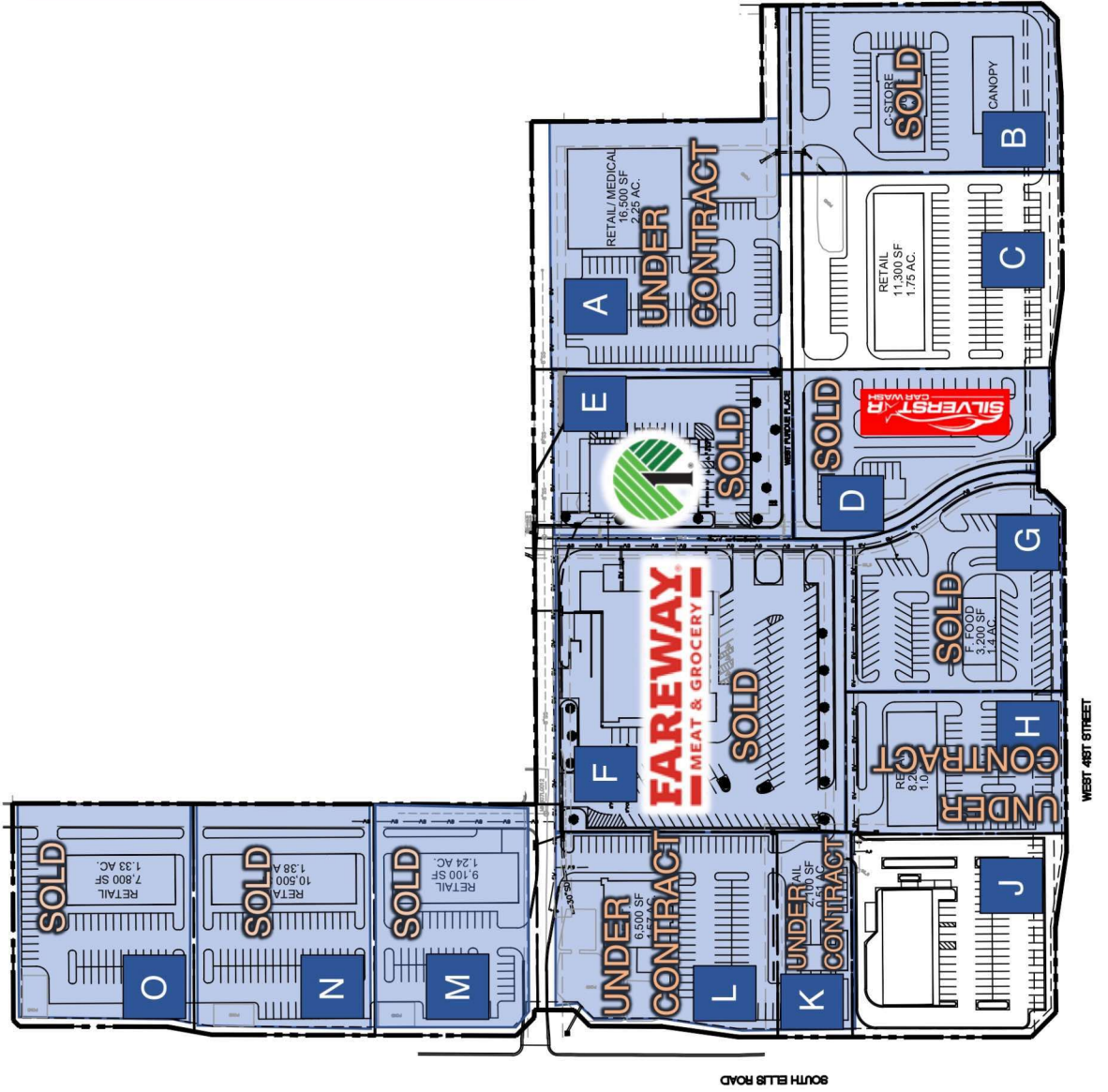
RETAIL
1,300 SF
1.75 AC.

SOLD

LOT 16
BLOCK 4



SITE PLAN



Lot A	Under Contract
Lot B	Sold
Lot C	1.75 Acres \$13 / sf
Lot D	Sold
Lot E	Sold
Lot F	Sold
Lot G	Sold
Lot H	Under Contract
Lot J	1.6 Acres \$16 / sf
Lot K	Under Contract
Lot L	Under Contract
Lot M	Sold
Lot N	Sold
Lot O	Sold
Lot P	Sold

