

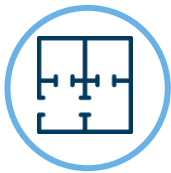
WILLOW RIDGE OFFICE LAND

101 S Golden Willow Avenue, Sioux Falls SD 57110

FOR SALE



Ideal Location For Daycare Or Similar Use



LAYOUT

Office land located in this growing development just east of Sioux Falls by Willow Run Golf Course & Fred Assam Elementary School, part of the Brandon Valley School District.



ZONED

This land is zoned Office, which can include daycare, medical, bank, business support & many others.



LOCATION

Willow Ridge is situated on the rapidly expanding east side on Six Mile Road by Fred Assam Elementary School, Willow Run Golf Course & a new residential neighborhood that is continuing to develop & grow.



SIZE

Tract 4: 62,796 SF
(1.442 Acres)



PRICE

Tract 4:
\$10.00 PSF



NEIGHBORS

Neighbors include Uncle Ed's Specialty Meats, HuHot Mongolian Grill, Buffalo Wild Wings, WalMart, Aspen Dental, Dawley Farms with all it's restaurants & retail & more.

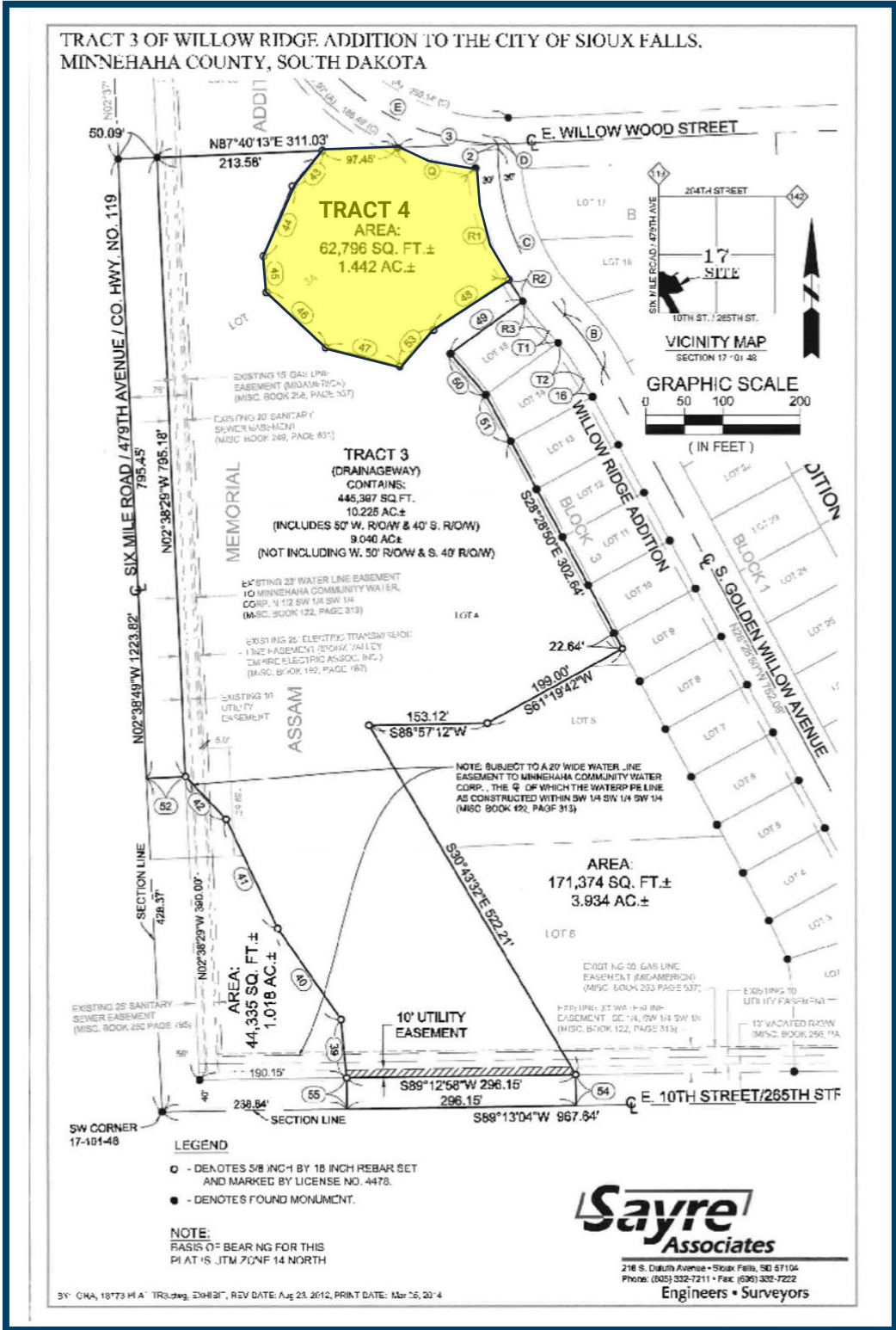
Information deemed reliable but not guaranteed.



605.361.8211 | VBCcommercial.com

2571 S Westlake Dr #100 Sioux Falls SD 57106

STEVE
VAN BUSKIRK
605.366.0939
steve@vbclink.com



605.361.8211 | VBCcommercial.com

2571 S Westlake Dr #100 Sioux Falls SD 57106

STEVE VAN BUSKIRK

605.366.0939

steve@vbclink.com

Aerials of Tract 4



605.361.8211 | VBCcommercial.com

2571 S Westlake Dr #100 Sioux Falls SD 57106

STEVE
VAN BUSKIRK
605.366.0939
steve@vbclink.com