

## MINIMUM GROUND ELEVATION

MINIMUM GROUND ELEVATION (MGE): IS THE MINIMUM FINISHED GROUND ELEVATION AT THE HOME. THIS IS THE TOP OF BLACK DIRT UNDER THE GRASS, OR THE TOP OF LANDSCAPE ROCK OR OTHER LANDSCAPE MATERIAL AT THE LOWEST EXPOSED PART OF THE HOUSE.

THE MGE SHOULD NOT BE CONSTRUED AS BEING APPLICABLE TO ALL AREAS OF THE BUILDING FOUNDATION, NOR AS A FINISHED FLOOR ELEVATION FOR A WALKOUT BASEMENT.

ON LOTS WITH REAR YARD DRAINAGE THIS ELEVATION TYPICALLY INDICATES THE MINIMUM FINISHED GROUND AT THE LOCATION OF THE HOME NEAREST THE LOW BACK CORNER OF THE LOT. GROUND ELEVATIONS ON THE FRONT AND HIGH BACK SIDE OF THE STRUCTURE MAY NEED TO BE SUBSTANTIALLY HIGHER TO ACHIEVE POSITIVE DRAINAGE.

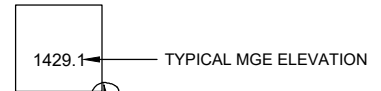
ON LOTS WITH BACK TO FRONT DRAINAGE THIS ELEVATION TYPICALLY INDICATES THE MINIMUM FINISHED GROUND AT THE LOCATION OF THE HOME NEAREST THE LOW FRONT CORNER OF THE LOT. GROUND ELEVATIONS ON THE SIDES AND REAR OF THE STRUCTURE MAY NEED TO BE SUBSTANTIALLY HIGHER TO ACHIEVE POSITIVE DRAINAGE.

IN ALL CASES, LOTS SHALL BE GRADED TO DRAIN SURFACE WATER AWAY FROM FOUNDATION WALLS. THE GRADE SHALL FALL NOT FEWER THAN 6 INCHES WITHIN THE FIRST 10 FEET AS REQUIRED BY THE INTERNATIONAL RESIDENTIAL CODE.

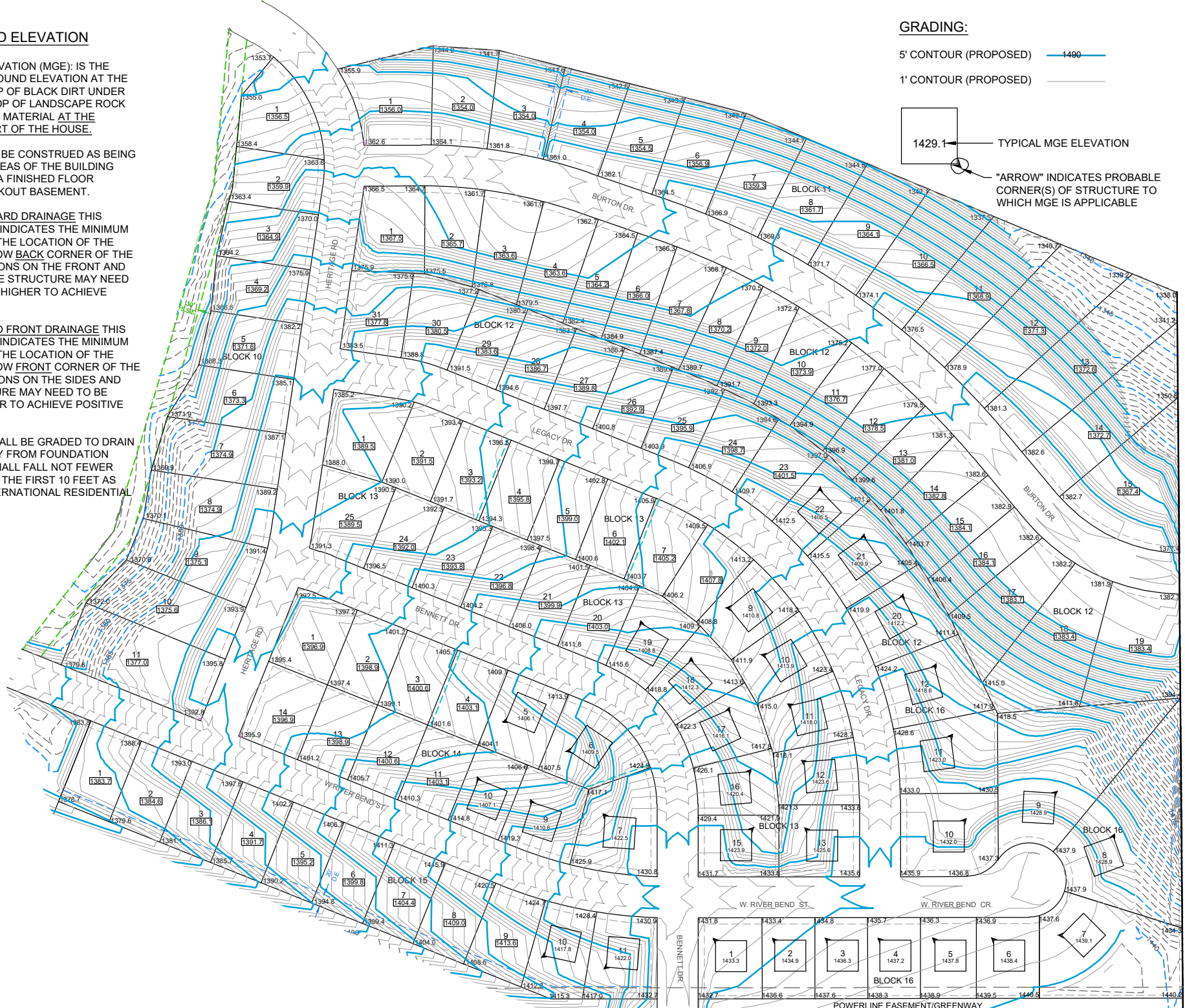
## GRADING:

5' CONTOUR (PROPOSED) — 1490 —

1' CONTOUR (PROPOSED) — —



"ARROW" INDICATES PROBABLE CORNER(S) OF STRUCTURE TO WHICH MGE IS APPLICABLE



NOT TO SCALE