

**FOR
LEASE**

ChiroFamily Single Offices

5048 E 57th Street Sioux Falls, SD 57108
SUITE A



Single Offices Within A Family-Focused Chiropractic Clinic



SIZE

Office A: 132 SF
Office B: 132 SF
Office C: 132 SF



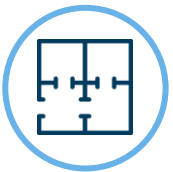
PRICE

Office A, B & C :
\$600 GROSS /m



LOCATION

High-profile location in the Brooks Crossing Professional row on 57th Street between Sycamore Avenue and Highway 100.



LAYOUT

3 single offices with large windows and brand new finishes. Shared common space includes a fully furnished reception area, waiting room and breakroom with kitchenette.



IDEAL TENANTS

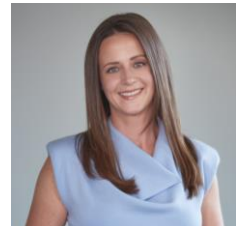
Massage Therapist, Nutritionist, Lactation Consultant, Midwife, Family Counselors



CO-TENANCY

ChiroFamily, Journey Technology Solutions, KLJ Engineering, Waddell & Reed, Cain Ellsworth & Co., Prairie Rehab, Get-N-Go, Flyboy Donuts, The Barrel House, Truks-n-Trykes Daycare, Fairway Meat & Grocery.

Information deemed reliable but not guaranteed.



605.351.5512

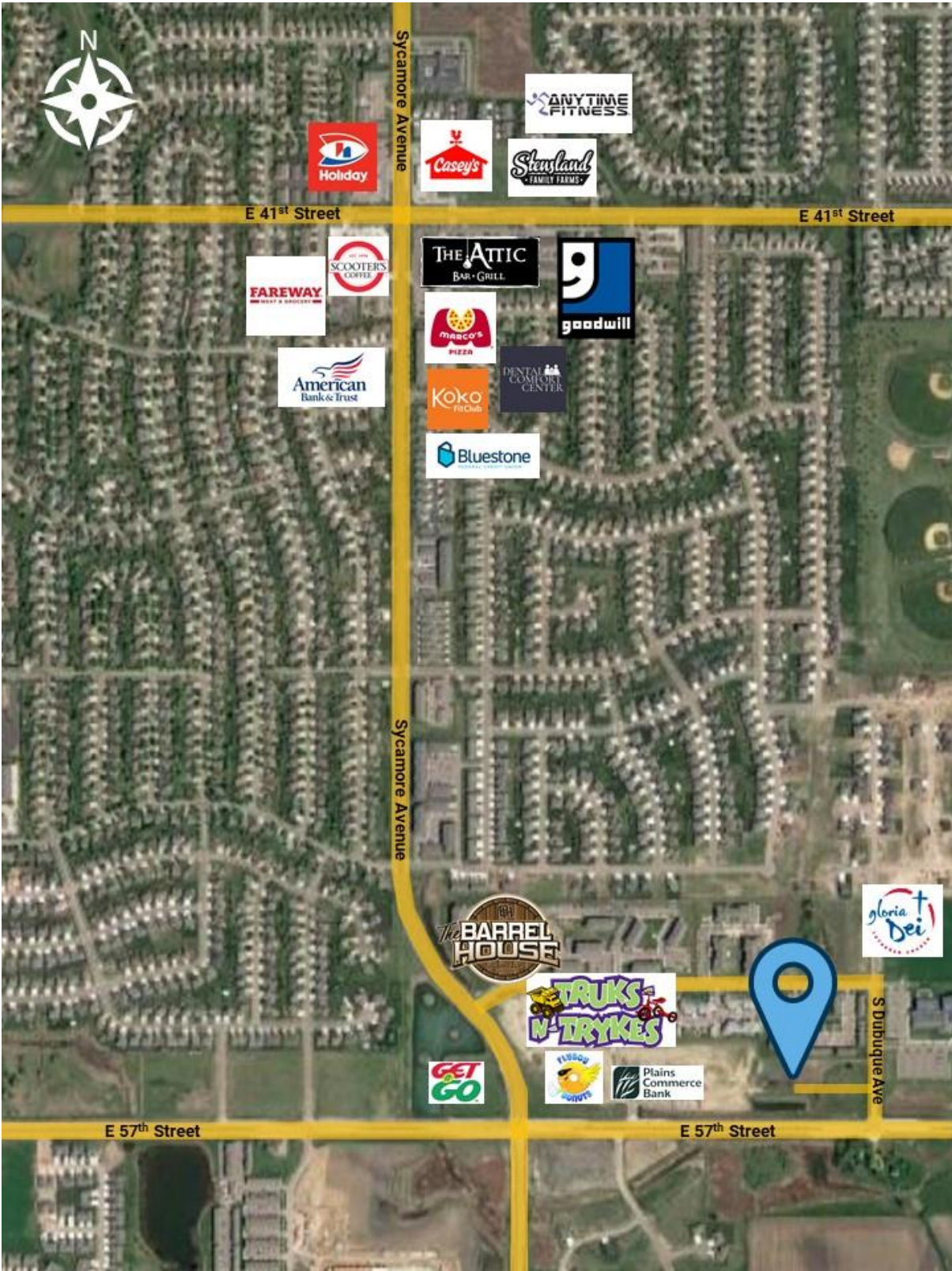
autumn.kaufhold@vbclink.com

605.361.8211 | VBCcommercial.com

2571 S Westlake Dr #100 Sioux Falls SD 57106

Information deemed reliable but not guaranteed.

AREA RETAIL MAP



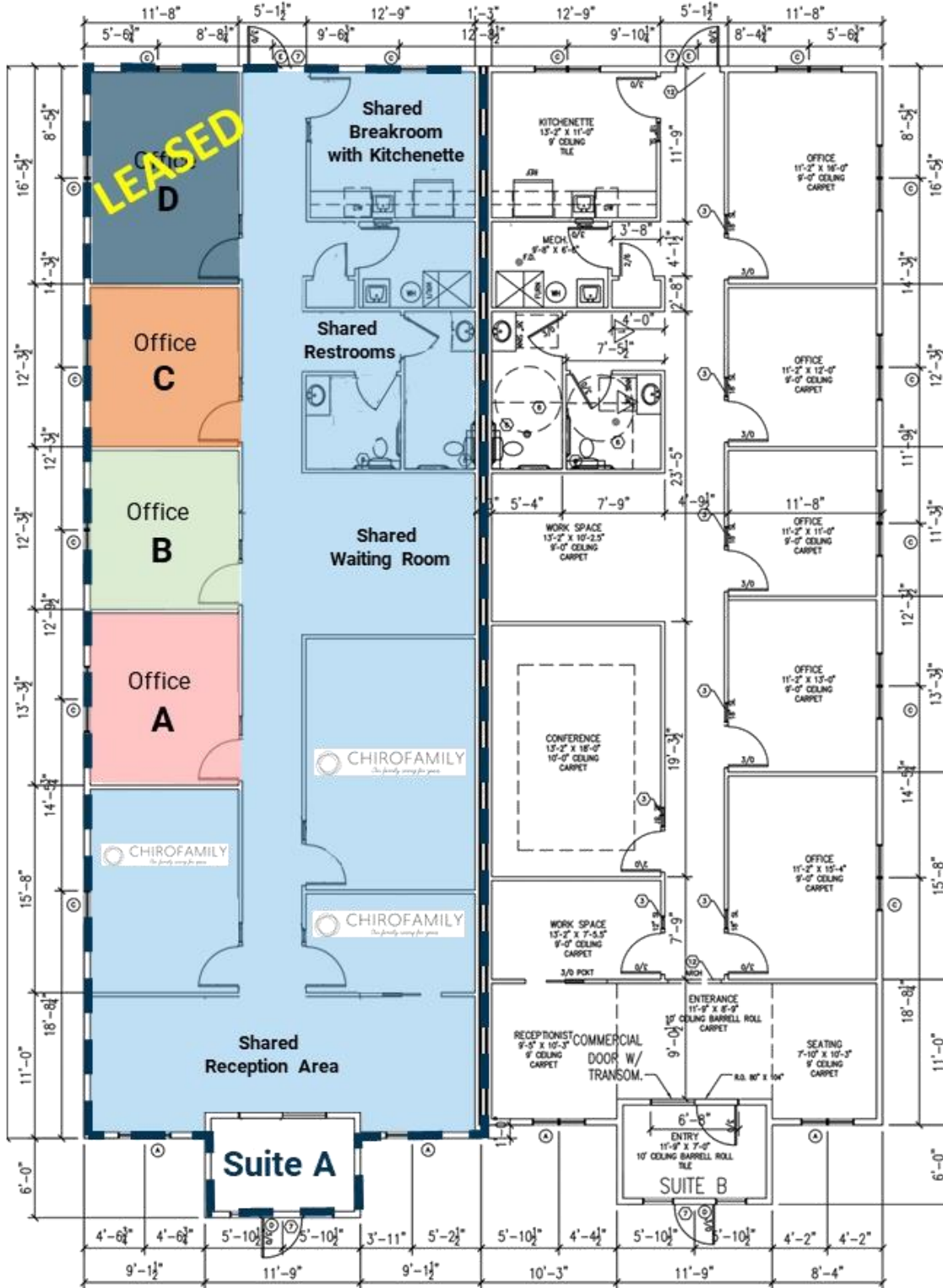
605.361.8211 | VBCcommercial.com

2571 S Westlake Dr #100 Sioux Falls SD 57106
Information deemed reliable but not guaranteed.



605.351.5512
autumn.kaufhold@vbclink.com

FLOORPLAN



605.351.5512

autumn.kaufhold@vbcclink.com

605.361.8211 | VBCcommercial.com

2571 S Westlake Dr #100 Sioux Falls SD 57106
Information deemed reliable but not guaranteed.

PHOTO GALLERY



605.361.8211 | VBCcommercial.com

2571 S Westlake Dr #100 Sioux Falls SD 57106

Information deemed reliable but not guaranteed.

605.351.5512

autumn.kaufhold@vbclink.com