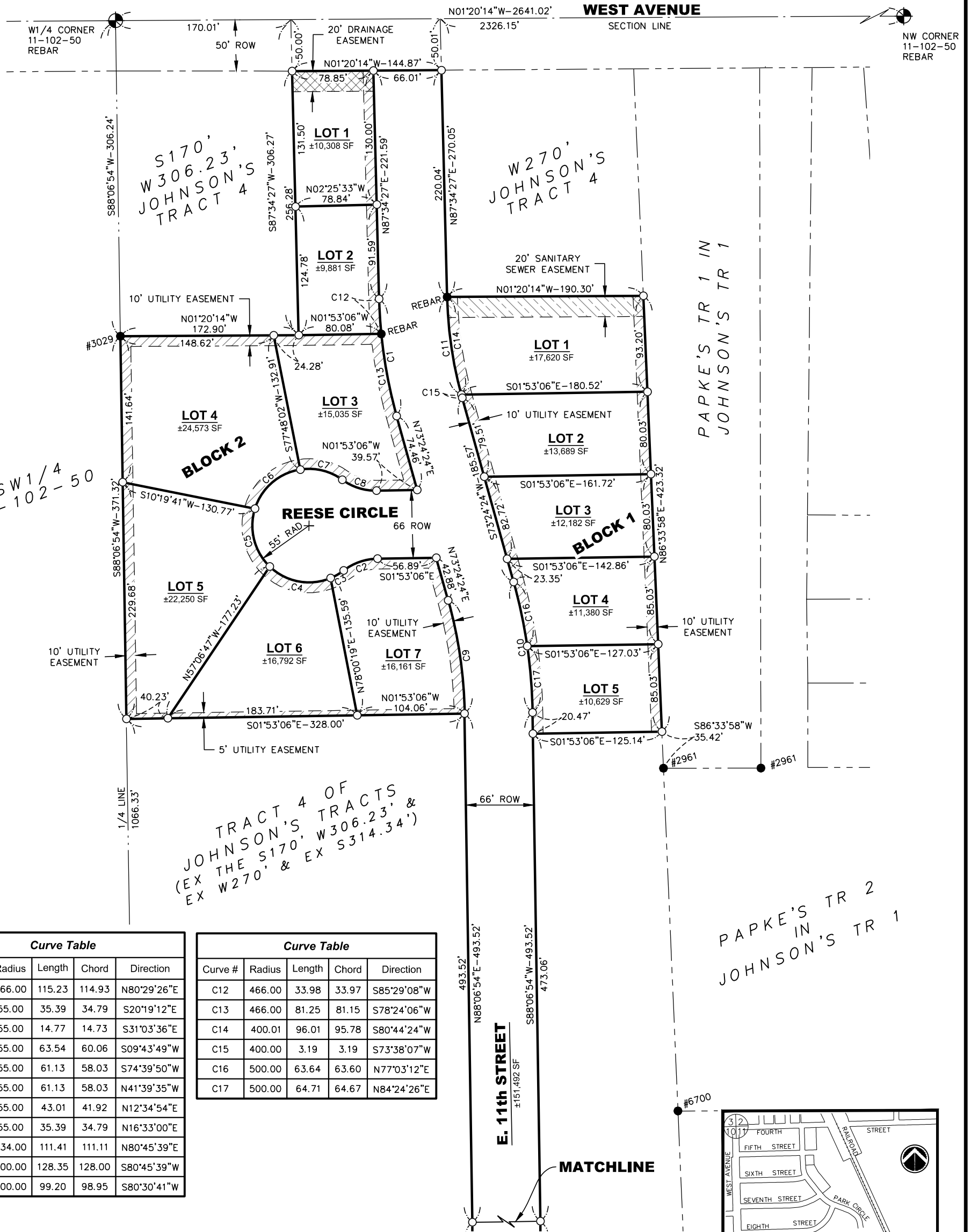


PLAT OF LOTS 1-5 IN BLOCK 1 & LOTS 1-7 IN BLOCK 2 & TRACT 1 OF
HERITAGE POND ADDITION
 TO THE CITY OF CROOKS, MINNEHAHA COUNTY, SOUTH DAKOTA.
 CONTAINING ±11.09 ACRES (INCLUDING ±3.48 ACRES STREET R.O.W.)



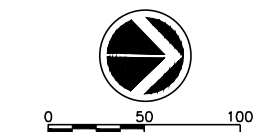
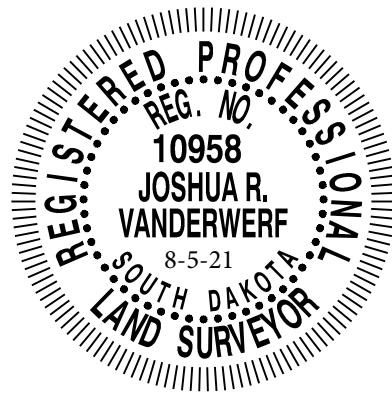
TRACT 4 OF JOHNSON'S TRACTS (EX THE S170, W306.23, & EX W270, & EX S314.34')

PAPKE'S TR 1 IN JOHNSON'S TR 1

PAPKE'S TR 2 IN JOHNSON'S TR 1

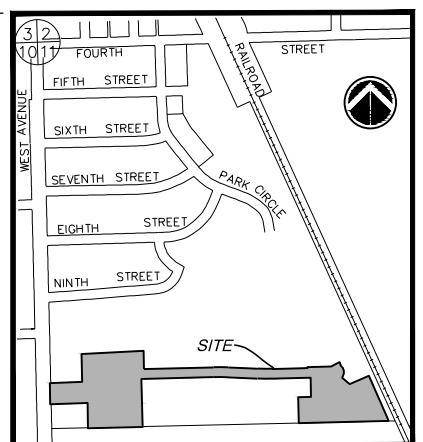
Curve Table				
Curve #	Radius	Length	Chord	Direction
C1	466.00	115.23	114.93	N80°29'26"E
C2	55.00	35.39	34.79	S20°19'12"E
C3	55.00	14.77	14.73	S31°03'36"E
C4	55.00	63.54	60.06	S09°43'49"W
C5	55.00	61.13	58.03	S74°39'50"W
C6	55.00	61.13	58.03	N41°39'35"W
C7	55.00	43.01	41.92	N12°34'54"E
C8	55.00	35.39	34.79	N16°33'00"E
C9	434.00	111.41	111.11	N80°45'39"E
C10	500.00	128.35	128.00	S80°45'39"W
C11	400.00	99.20	98.95	S80°30'41"W

Curve Table				
Curve #	Radius	Length	Chord	Direction
C12	466.00	33.98	33.97	S85°29'08"W
C13	466.00	81.25	81.15	S78°24'06"W
C14	400.01	96.01	95.78	S80°44'24"W
C15	400.00	3.19	3.19	S73°38'07"W
C16	500.00	63.64	63.60	N77°03'12"E
C17	500.00	64.71	64.67	N84°24'26"E



- GENERAL NOTES:**
1. BASIS OF BEARINGS FOR THIS DRAWING IS UTM WITH NAD83 DATUM, ZONE 14, US FOOT.
 2. RESEARCH OF EXISTING EASEMENTS OF RECORD WAS NOT PERFORMED.

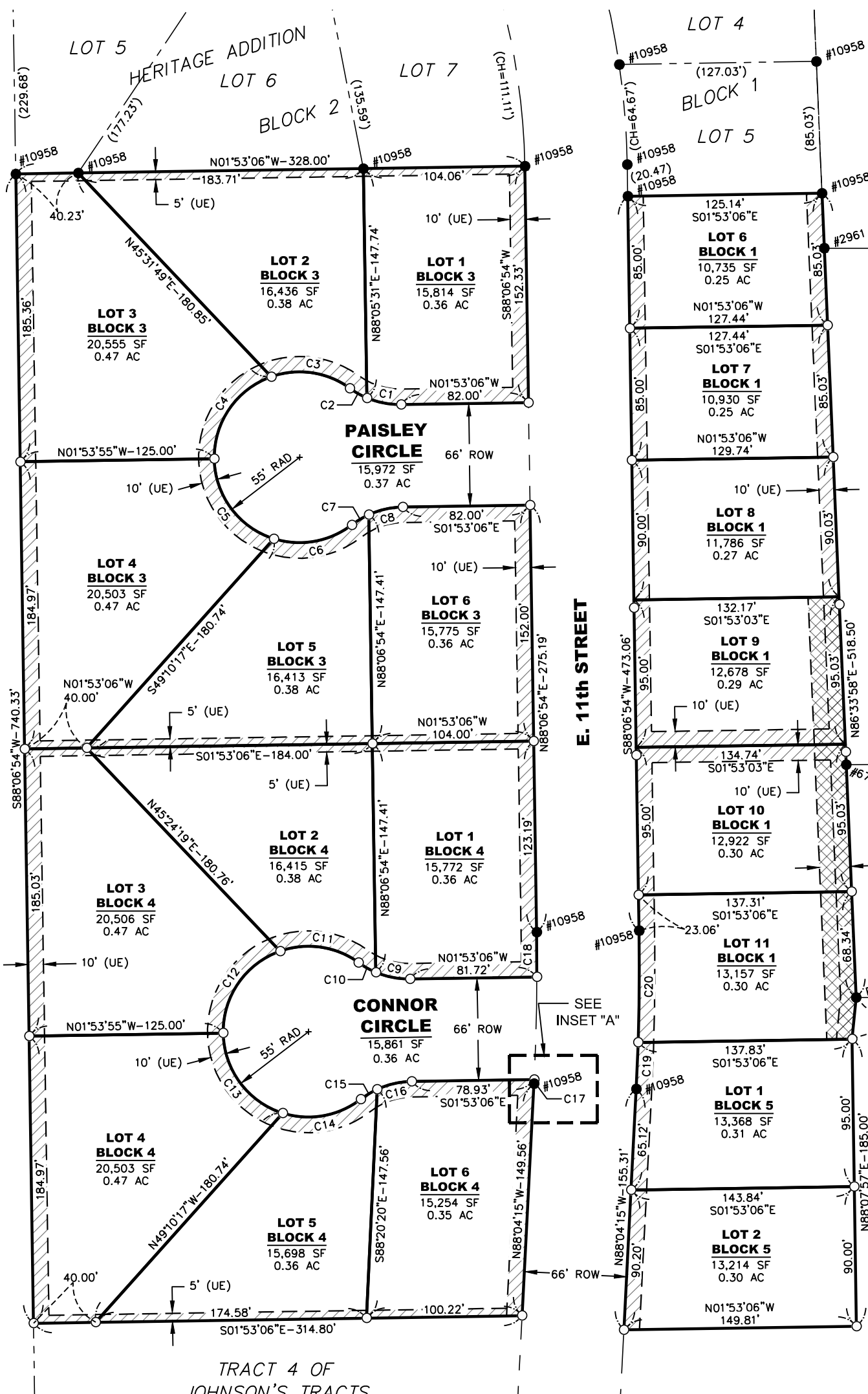
- LEGEND**
- PROPERTY LINE
 - SECTION LINE
 - QUARTER LINE
 - PLATTED PROPERTY LINE
 - UTILITY EASEMENT
 - 20' SANITARY SEWER EASEMENT
 - 20' DRAINAGE EASEMENT
 - FOUND MONUMENT
 - SET 5/8" X 18" CAPPED REBAR
 - FOUND SECTION CORNER



KEY MAP
CITY OF CROOKS

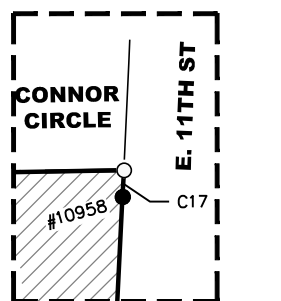
DGR ENGINEERING
 2909 E. 57TH STREET, SUITE 101
 SIOUX FALLS, SD 57108
 (605) 339-4157 office
 (605) 339-4175 fax
 dgr.com

PLAT OF LOTS 6-11 IN BLOCK 1; LOTS 1-6 IN BLOCK 3;
 LOTS 1-6 IN BLOCK 4; & LOTS 1-2 IN BLOCK 5 OF
HERITAGE POND ADDITION
 TO THE CITY OF CROOKS, MINNEHAHA COUNTY, SOUTH DAKOTA.
 CONTAINING ±2.27 ACRES (INCLUDING ±0.73 ACRES STREET R.O.W.)



Curve Table				
Curve #	Radius	Length	Chord	Direction
C1	55.00	22.63	22.47	N09°54'15"E
C2	55.00	12.76	12.73	N28°20'21"E
C3	55.00	53.09	51.05	N07°19'57"E
C4	55.00	68.70	64.32	N56°06'09"W
C5	55.07	68.70	64.33	S52°21'09"W
C6	55.11	53.09	51.06	S11°07'48"E
C7	55.00	12.76	12.73	S32°06'32"E
C8	55.00	22.63	22.47	S13°40'27"E
C9	55.00	22.63	22.47	N09°54'15"E
C10	55.00	12.76	12.73	N28°20'21"E
C11	55.00	53.09	51.05	N07°19'57"E
C12	55.00	68.70	64.32	N56°06'09"W
C13	55.07	68.70	64.33	S52°21'09"W
C14	55.12	53.09	51.06	S11°07'48"E
C15	55.00	12.44	12.41	S32°16'32"E
C16	55.00	22.95	22.79	S13°50'26"E
C17	1467.00	2.78	2.78	N88°07'31"W
C18	1467.00	28.81	28.81	S88°40'40"W
C19	1533.00	30.08	30.08	S88°37'59"E
C20	1533.00	71.97	71.96	N89°27'36"E

PAPKE'S TR 2
 IN
 JOHNSON'S TR 1

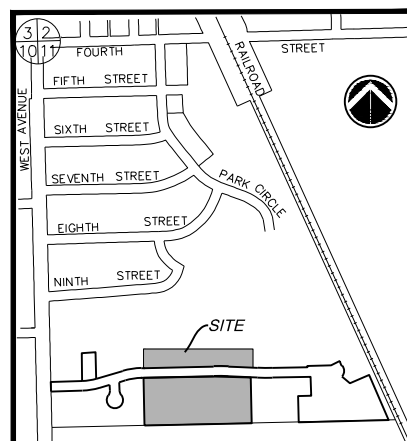


TRACT 4
 OF
 JOHNSON'S
 TRACTS

INSET "A"
 1"=20'

LEGEND

- - EXISTING EASEMENT LINE
- - PROPERTY LINE
- - RIGHT OF WAY LINE
- - CENTER LINE
- - PLATTED PROPERTY LINE
- - FOUND MONUMENT
- - SET /8" x 18" CAPPED REBAR
- - FOUND SECTION CORNER
- (100.00') - PREVIOUSLY PLATTED DIMENSION
- (UE)--- - (UE) UTILITY EASEMENT
- (AE)--- - (AE) ACCESS EASEMENT
- (DE)--- - (DE) DRAINAGE EASEMENT



KEY MAP
 CITY OF CROOKS

GENERAL NOTES:

1. BASIS OF BEARINGS FOR THIS DRAWING IS UTM WITH NAD83 DATUM, ZONE 14, US FOOT.
2. RESEARCH OF EXISTING EASEMENTS OF RECORD WAS NOT PERFORMED.



DGR ENGINEERING
 2909 E. 57TH STREET, SUITE 101
 SIOUX FALLS, SD 57108
 (605) 339-4157 office
 (605) 339-4175 fax
 dgr.com

