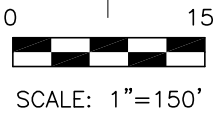
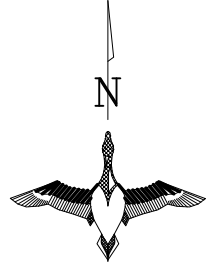
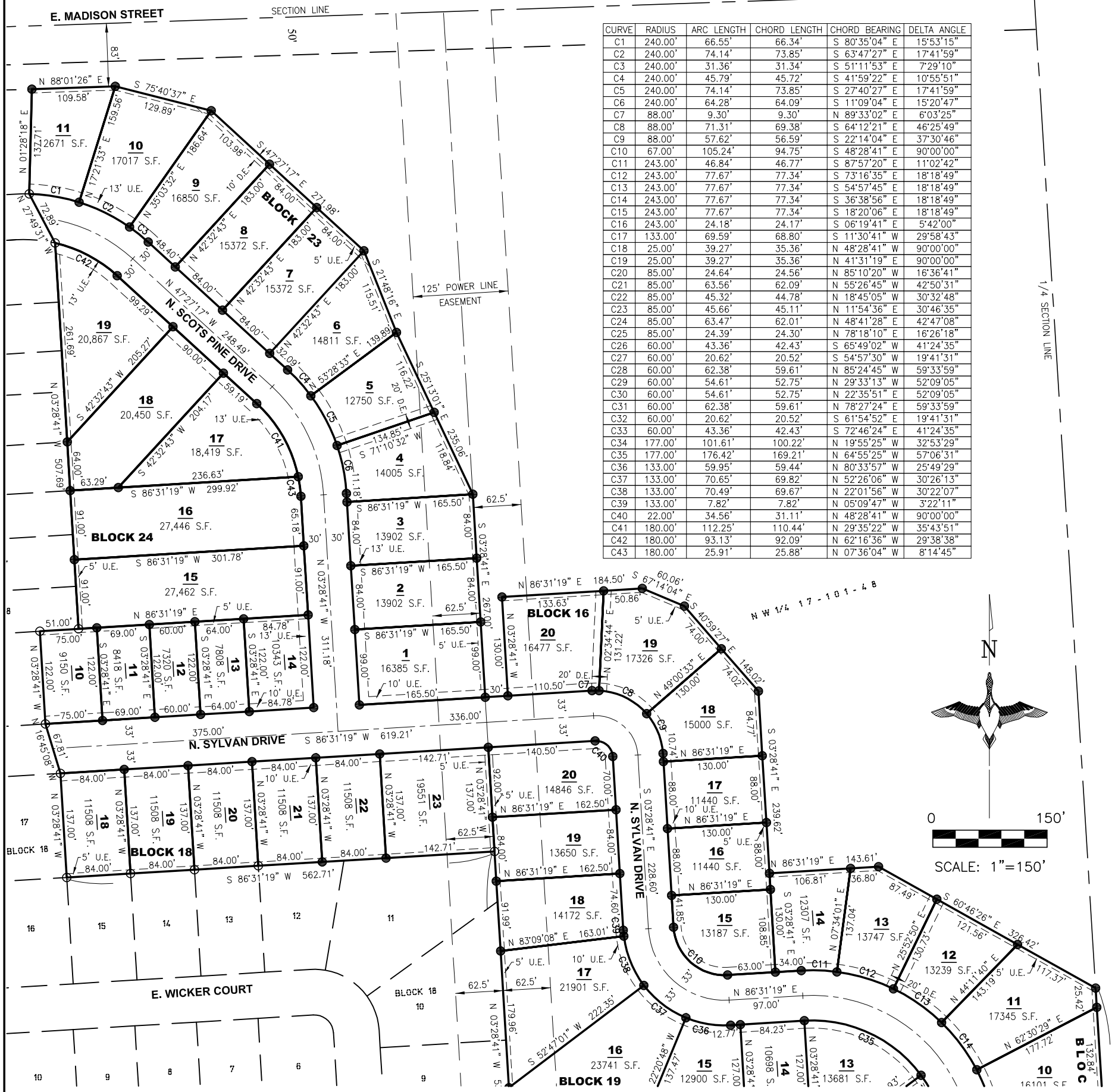


**PLAT OF LOTS 25, 26 AND 27 IN BLOCK 11; LOTS 7, 8, 9, 10, 11, 12, 13, 14, 15, 16, 17, 18, 19 AND 20 IN BLOCK 14; LOTS 1, 2, 3, 4, 5, 6, 7 AND 8 IN BLOCK 15; LOTS 1, 2, 3, 4, 5, 6, 7, 8, 9, 10, 11, 12, 13, 14, 15, 16, 17, 18, 19 AND 20 IN BLOCK 16; LOTS 18, 20, 21, 22 AND 23 IN BLOCK 18; LOTS 1, 12, 13, 14, 15, 16, 17, 18, 19 AND 20 IN BLOCK 19; LOTS 1, 2, 3, 4, 5, 6, 7, 8, 9, 10 AND 11 IN BLOCK 23; LOTS 10, 11, 12, 13, 14, 15, 16, 17, 18 AND 19 IN BLOCK 24; ALL OF**  
**WILLOW RIDGE III ADDITION**

AN ADDITION TO THE CITY OF SIOUX FALLS, MINNEHAHA COUNTY, SOUTH DAKOTA

N1/4 CORNER  
17-101-48



**LEGEND:**

- SET 5/8" REBAR W/CAP #6700
- FD. MONUMENT
- △ SECTION CORNER
- (M) MEASURED DISTANCE
- (R) RECORD INFORMATION
- AC. ACRES
- S.F. SQUARE FEET
- U.E. UTILITY EASEMENT
- D.E. DRAINAGE EASEMENT
- W.E. WATER EASEMENT
- S.C.A.E. SUMP COLLECTION ACCESS EASEMENT
- R/W RIGHT-OF-WAY
- N.T.S. NOT TO SCALE
- PREVIOUSLY PLATTED LINE
- EASEMENT LINE

NOTES:  
BASIS OF BEARINGS IS ASSUMED.

THIS PLAT WAS PREPARED WITHOUT THE BENEFIT OF A TITLE COMMITMENT.

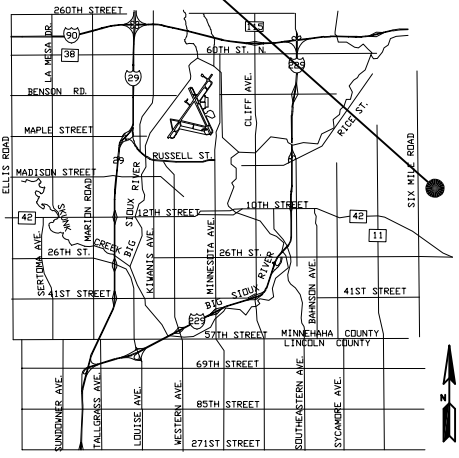
EASEMENTS OF RECORD WERE NOT RESEARCHED AND ARE NOT SHOWN ON THE PLAT.



PREPARED BY:

**Midwest Land Surveying, Inc.**  
 Land Surveying and GPS Consulting  
 211 E. 14th Street Suite 100  
 Sioux Falls, South Dakota 57104  
 Phone: (605) 339-8901 FAX:(605) 274-8951

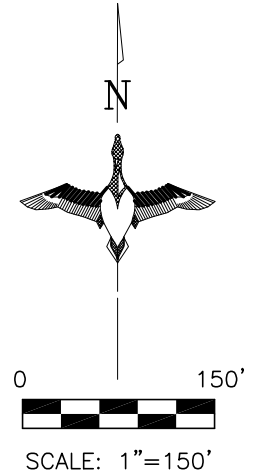
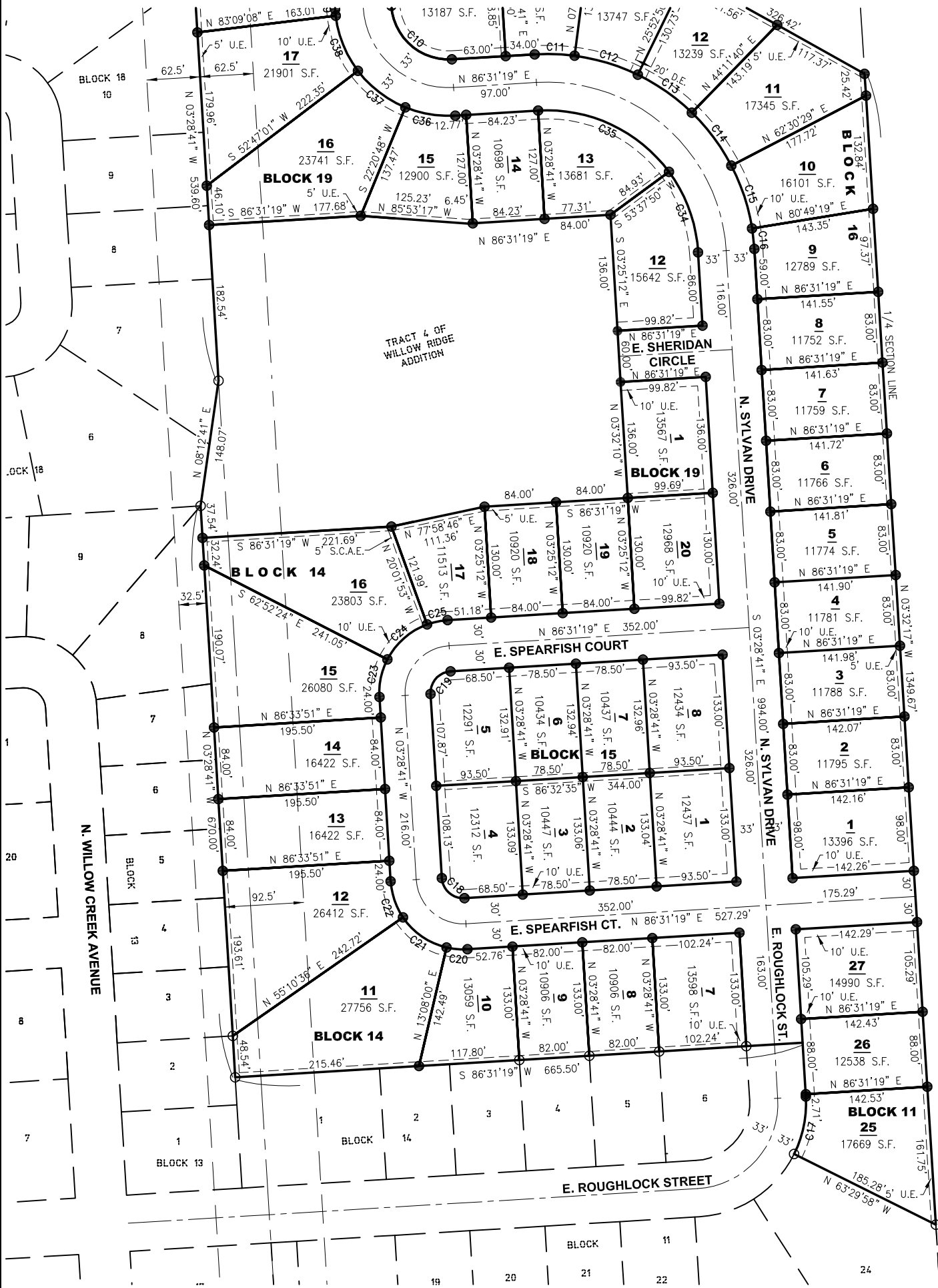
**SITE**



VICINITY MAP  
CITY OF SIOUX FALLS

**PLAT OF LOTS 25, 26 AND 27 IN BLOCK 11; LOTS 7, 8, 9, 10, 11, 12, 13, 14, 15, 16, 17, 18, 19 AND 20 IN BLOCK 14; LOTS 1, 2, 3, 4, 5, 6, 7 AND 8 IN BLOCK 15; LOTS 1, 2, 3, 4, 5, 6, 7, 8, 9, 10, 11, 12, 13, 14, 15, 16, 17, 18, 19 AND 20 IN BLOCK 16; LOTS 18, 20, 21, 22 AND 23 IN BLOCK 18; LOTS 1, 12, 13, 14, 15, 16, 17, 18, 19 AND 20 IN BLOCK 19; LOTS 1, 2, 3, 4, 5, 6, 7, 8, 9, 10 AND 11 IN BLOCK 23; LOTS 10, 11, 12, 13, 14, 15, 16, 17, 18 AND 19 IN BLOCK 24; ALL OF WILLOW RIDGE III ADDITION**

AN ADDITION TO THE CITY OF SIOUX FALLS, MINNEHAHA COUNTY, SOUTH DAKOTA



HE 1/4 17-101-48

**LEGEND:**

- SET 5/8" REBAR W/CAP #6700
- FD. MONUMENT
- △ SECTION CORNER
- (M) MEASURED DISTANCE
- (R) RECORD INFORMATION
- AC. ACRES
- S.F. SQUARE FEET
- U.E. UTILITY EASEMENT
- D.E. DRAINAGE EASEMENT
- W.E. WATER EASEMENT
- S.C.A.E. SUMP COLLECTION ACCESS EASEMENT
- R/W RIGHT-OF-WAY
- N.T.S. NOT TO SCALE
- PREVIOUSLY PLATTED LINE
- EASEMENT LINE

NOTES:  
BASIS OF BEARINGS IS ASSUMED.

THIS PLAT WAS PREPARED WITHOUT THE BENEFIT OF A TITLE COMMITMENT.

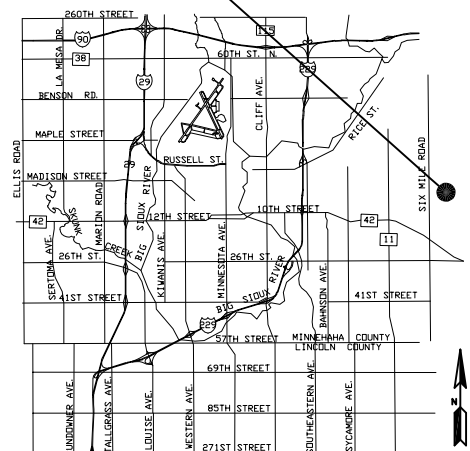
EASEMENTS OF RECORD WERE NOT RESEARCHED AND ARE NOT SHOWN ON THE PLAT.



PREPARED BY:

**Midwest Land Surveying, Inc.**  
Land Surveying and GPS Consulting  
211 E. 14th Street Suite 100  
Sioux Falls, South Dakota 57104  
Phone: (605) 339-8901 FAX:(605) 274-8951

**SITE**

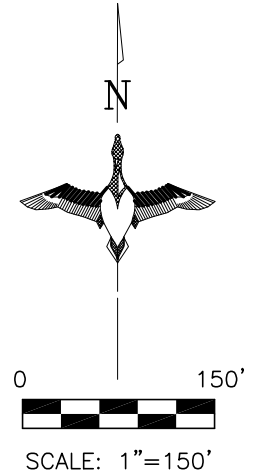
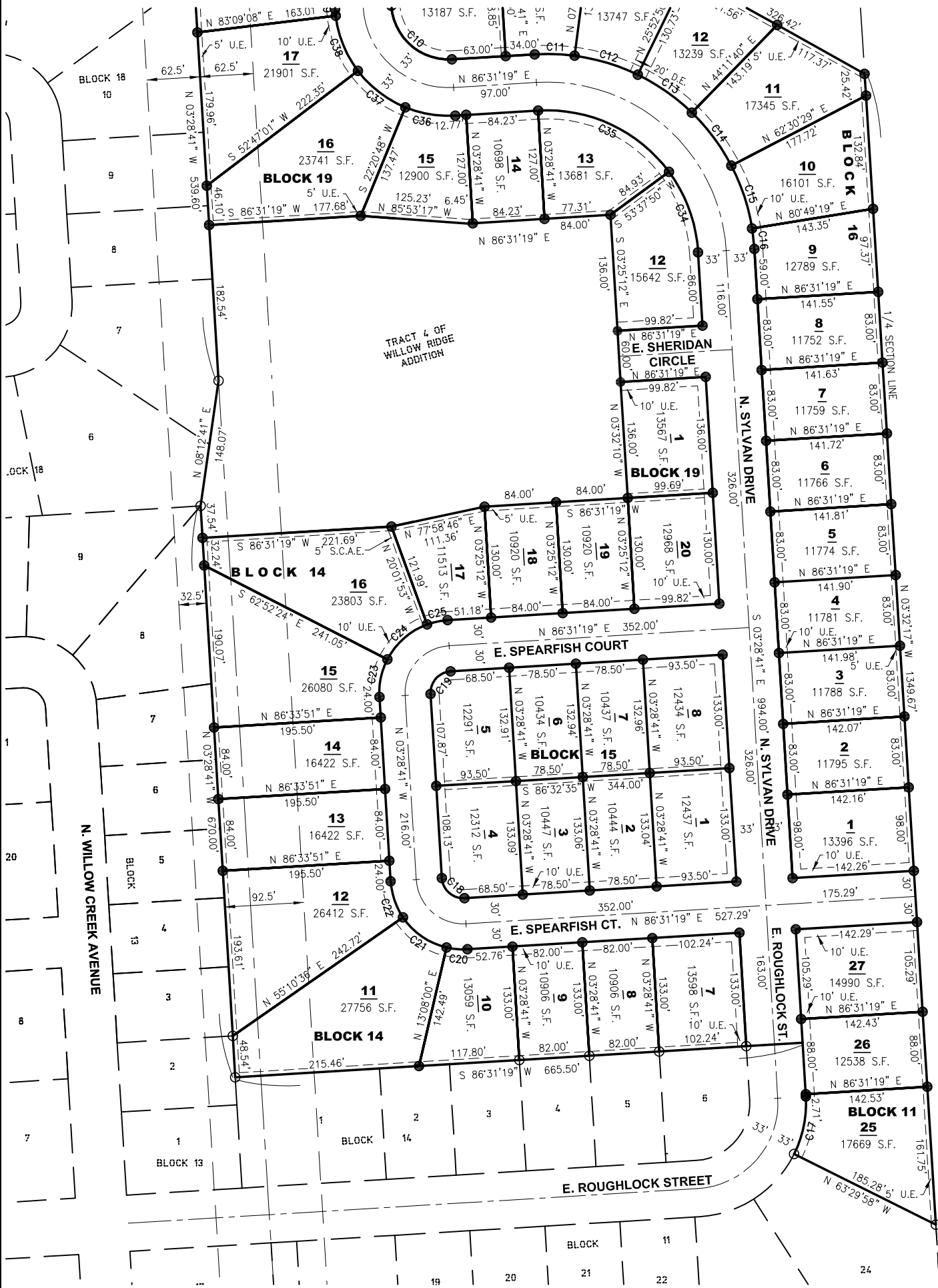


VICINITY MAP  
CITY OF SIOUX FALLS



**PLAT OF LOTS 25, 26 AND 27 IN BLOCK 11; LOTS 7, 8, 9, 10, 11, 12, 13, 14, 15, 16, 17, 18, 19 AND 20 IN BLOCK 14; LOTS 1, 2, 3, 4, 5, 6, 7 AND 8 IN BLOCK 15; LOTS 1, 2, 3, 4, 5, 6, 7, 8, 9, 10, 11, 12, 13, 14, 15, 16, 17, 18, 19 AND 20 IN BLOCK 16; LOTS 18, 20, 21, 22 AND 23 IN BLOCK 18; LOTS 1, 12, 13, 14, 15, 16, 17, 18, 19 AND 20 IN BLOCK 19; LOTS 1, 2, 3, 4, 5, 6, 7, 8, 9, 10 AND 11 IN BLOCK 23; LOTS 10, 11, 12, 13, 14, 15, 16, 17, 18 AND 19 IN BLOCK 24; ALL OF WILLOW RIDGE III ADDITION**

AN ADDITION TO THE CITY OF SIOUX FALLS, MINNEHAHA COUNTY, SOUTH DAKOTA



HE 1/4 17-101-48

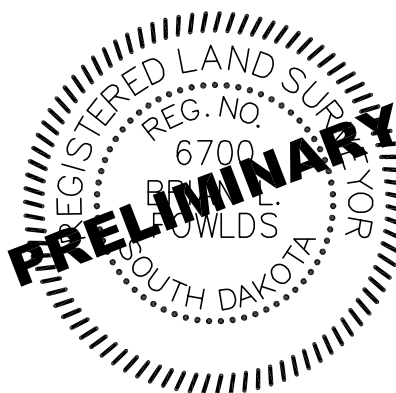
**LEGEND:**

- SET 5/8" REBAR W/CAP #6700
- FD. MONUMENT
- △ SECTION CORNER
- (M) MEASURED DISTANCE
- (R) RECORD INFORMATION
- AC. ACRES
- S.F. SQUARE FEET
- U.E. UTILITY EASEMENT
- D.E. DRAINAGE EASEMENT
- W.E. WATER EASEMENT
- S.C.A.E. SUMP COLLECTION ACCESS EASEMENT
- R/W RIGHT-OF-WAY
- N.T.S. NOT TO SCALE
- PREVIOUSLY PLATTED LINE
- EASEMENT LINE

NOTES:  
BASIS OF BEARINGS IS ASSUMED.

THIS PLAT WAS PREPARED WITHOUT THE BENEFIT OF A TITLE COMMITMENT.

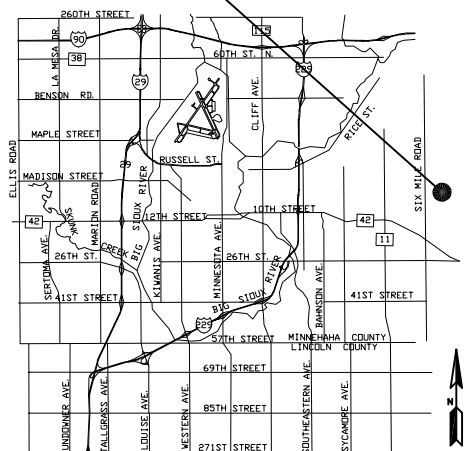
EASEMENTS OF RECORD WERE NOT RESEARCHED AND ARE NOT SHOWN ON THE PLAT.



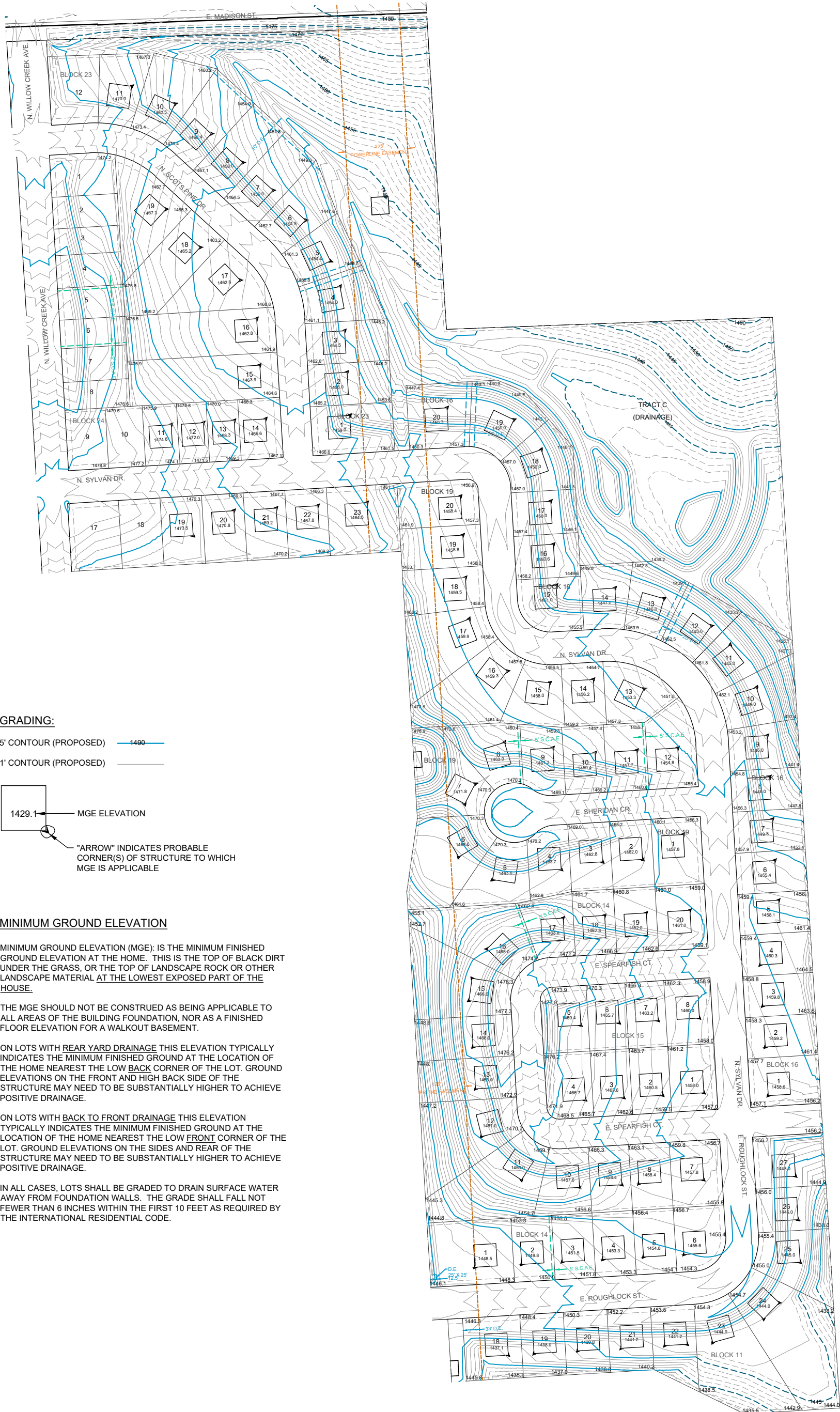
PREPARED BY:

**Midwest Land Surveying, Inc.**  
Land Surveying and GPS Consulting  
211 E. 14th Street Suite 100  
Sioux Falls, South Dakota 57104  
Phone: (605) 339-8901 FAX:(605) 274-8951

**SITE**



VICINITY MAP  
CITY OF SIOUX FALLS



**GRADING:**

5' CONTOUR (PROPOSED) ——— 1490 ———  
 1' CONTOUR (PROPOSED) ———



"ARROW" INDICATES PROBABLE CORNER(S) OF STRUCTURE TO WHICH MGE IS APPLICABLE

**MINIMUM GROUND ELEVATION**

MINIMUM GROUND ELEVATION (MGE): IS THE MINIMUM FINISHED GROUND ELEVATION AT THE HOME. THIS IS THE TOP OF BLACK DIRT UNDER THE GRASS, OR THE TOP OF LANDSCAPE ROCK OR OTHER LANDSCAPE MATERIAL AT THE LOWEST EXPOSED PART OF THE HOUSE.

THE MGE SHOULD NOT BE CONSTRUED AS BEING APPLICABLE TO ALL AREAS OF THE BUILDING FOUNDATION, NOR AS A FINISHED FLOOR ELEVATION FOR A WALKOUT BASEMENT.

ON LOTS WITH REAR YARD DRAINAGE THIS ELEVATION TYPICALLY INDICATES THE MINIMUM FINISHED GROUND AT THE LOCATION OF THE HOME NEAREST THE LOW BACK CORNER OF THE LOT. GROUND ELEVATIONS ON THE FRONT AND HIGH BACK SIDE OF THE STRUCTURE MAY NEED TO BE SUBSTANTIALLY HIGHER TO ACHIEVE POSITIVE DRAINAGE.

ON LOTS WITH BACK TO FRONT DRAINAGE THIS ELEVATION TYPICALLY INDICATES THE MINIMUM FINISHED GROUND AT THE LOCATION OF THE HOME NEAREST THE LOW FRONT CORNER OF THE LOT. GROUND ELEVATIONS ON THE SIDES AND REAR OF THE STRUCTURE MAY NEED TO BE SUBSTANTIALLY HIGHER TO ACHIEVE POSITIVE DRAINAGE.

IN ALL CASES, LOTS SHALL BE GRADED TO DRAIN SURFACE WATER AWAY FROM FOUNDATION WALLS. THE GRADE SHALL FALL NOT FEWER THAN 6 INCHES WITHIN THE FIRST 10 FEET AS REQUIRED BY THE INTERNATIONAL RESIDENTIAL CODE.

