

Golden Valley Plaza

4519 E. 26th Street, Sioux Falls, SD 57110

FOR LEASE



High-Traffic Retail Center



SIZE
2,240 SF



PRICE
\$12.00 PSF (NNN)

Estimated NNN
\$4.42 PSF



LOCATION
Located near the bustling neighborhood corner of E 26th Street & Sycamore Ave, this space offers high visibility on E 26th Street between Sycamore and Veteran's Parkway / HWY 100



T.I.A.
\$10.00 PSF
with an acceptable offer



TRAFFIC
E. 26th Street:
14,600 cars per day

Sycamore Avenue:
14,800 cars per day

Veteran's Parkway:
14,000 vehicles per day



CO-TENANCY
OverTime Sports Grill & Bar, LUX Nails & Spa, Tokyo 26, Walgreens, Hy-Vee Grocery Store, Starbucks, Lewis Drug, Chase Bank, Taco Johns, Year-Round Brown Tanning Salon, Breadsmith, Great Clips

Information deemed reliable but not guaranteed.



605.361.8211 | VBClink.com

2571 S Westlake Dr #100 Sioux Falls SD 57106



605.351.5512

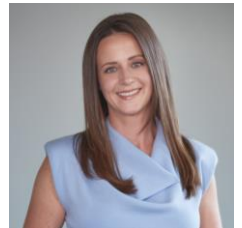
autumn.kaufhold@vbclink.com

AREA RETAIL MAP



605.361.8211 | VBClink.com

2571 S Westlake Dr #100 Sioux Falls SD 57106



605.351.5512

autumn.kaufhold@vbclink.com

AERIAL SITE VIEW



East 26th Street

Sycamore Avenue



605.361.8211 | VBClink.com

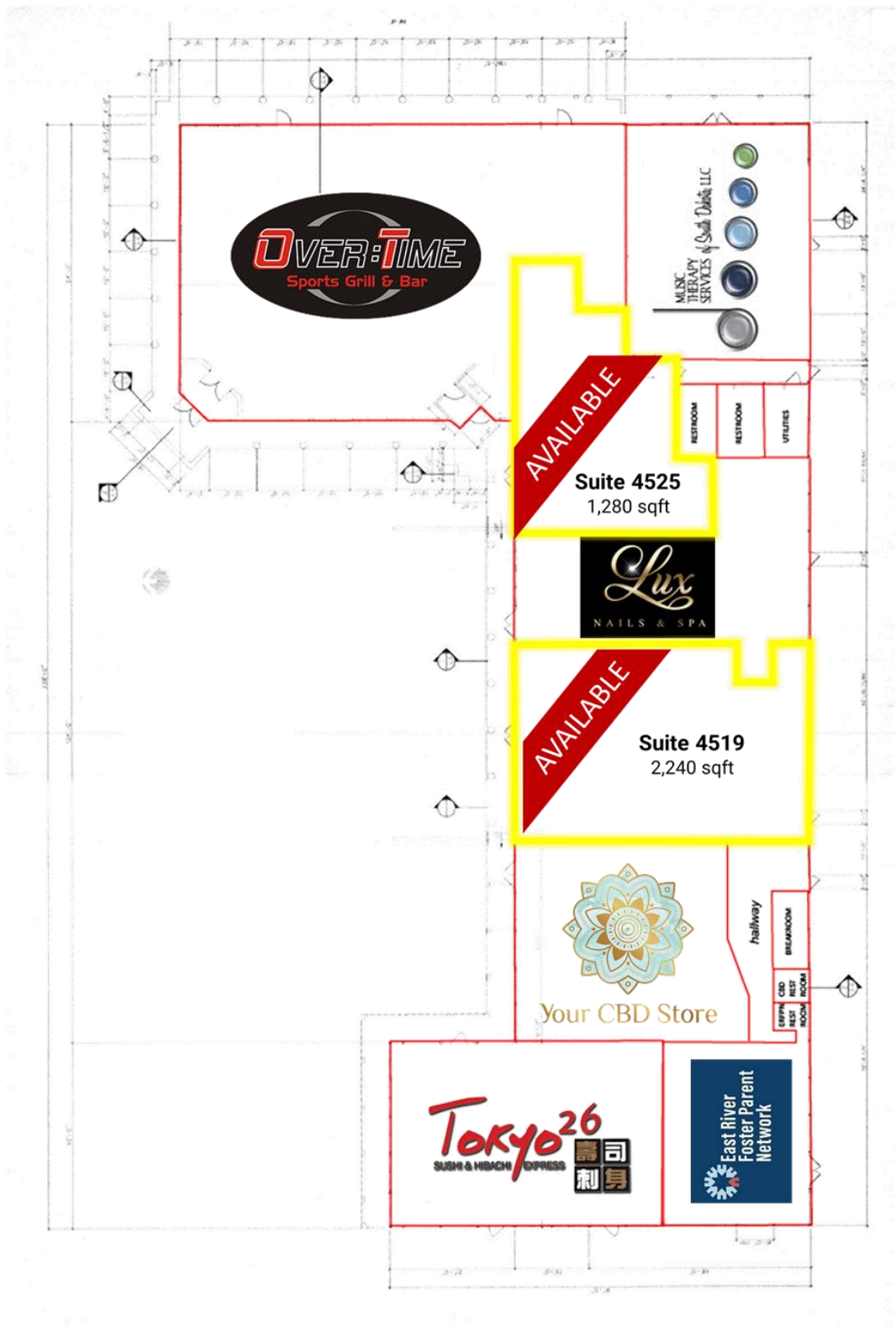
2571 S Westlake Dr #100 Sioux Falls SD 57106



605.351.5512

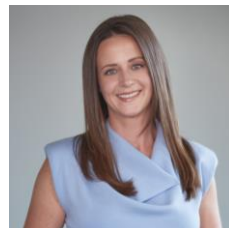
autumn.kaufhold@vbclink.com

BUILDING FLOOR PLAN



605.361.8211 | VBCLink.com

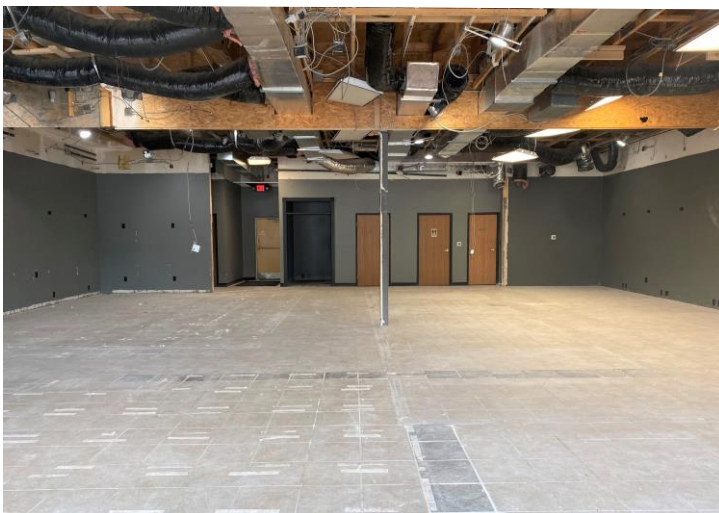
2571 S Westlake Dr #100 Sioux Falls SD 57106



605.351.5512

autumn.kaufhold@vbclink.com

PHOTO GALLERY



605.361.8211 | VBClink.com

2571 S Westlake Dr #100 Sioux Falls SD 57106



605.351.5512

autumn.kaufhold@vbclink.com