



HARVEST CREEK

57th + Highway 100

New Office Buildings For Sale



5201 East 57th Street
Sioux Falls, SD 57110



size

3,000 sqft



price

\$1,225,000



layout

Great single-tenant layout with 6 offices (with windows), 2 conferences rooms, inviting reception area, 2 restrooms, workroom/kitchenette, I.T. closet, mechanical room and garage.



delivery

Construction to commence in 2024.



location

High-profile 57th Street frontage near Veterans Parkway, directly across the street from Gloria Dei Lutheran Church.



co-tenancy

Harvest Creek Retail Development, Flyboy Donuts, Barrel House, Brooks Crossing Office Park, Harmodon Park, B&G Milky Way, Truks-N-Trykes Daycare, Dawley Farm Village

Information deemed reliable but not guaranteed.

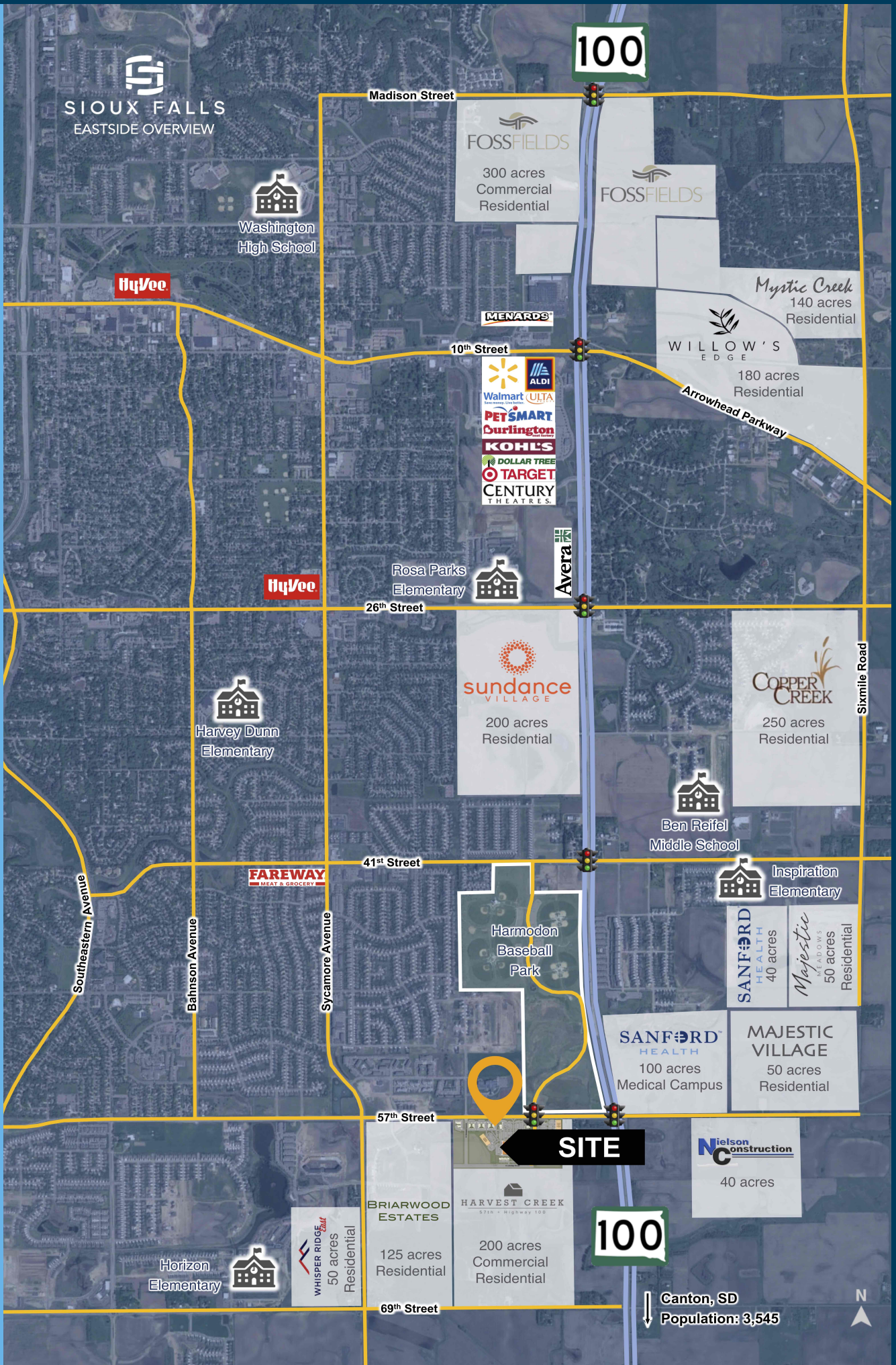


Lake Lorraine | 2571 Westlake Drive #100
Sioux Falls, South Dakota 57106
VBClick.com | 605.361.8211

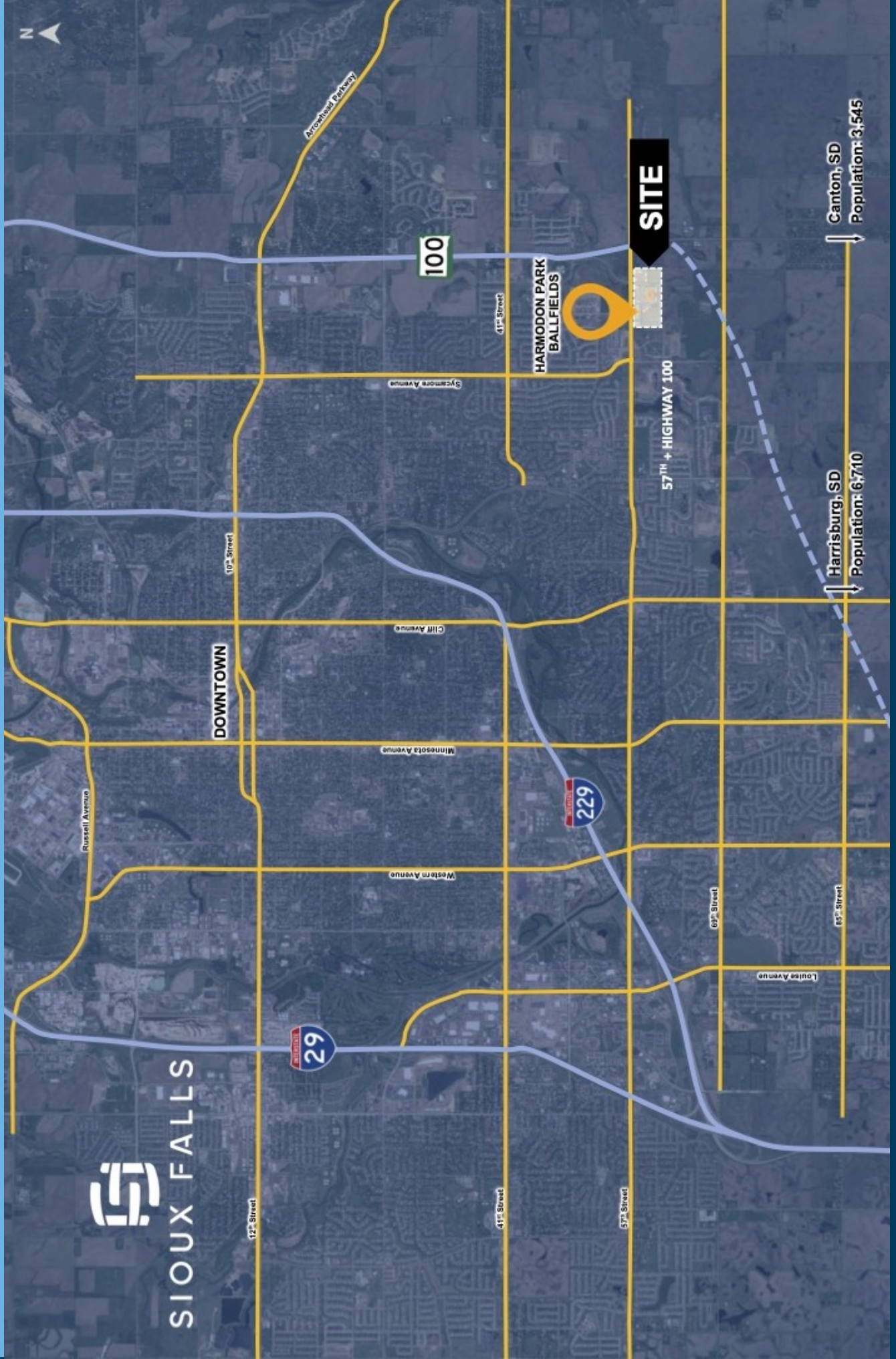


605.376.0127
Ryan@VBClick.com

EASTSIDE OVERVIEW



CITY MAP



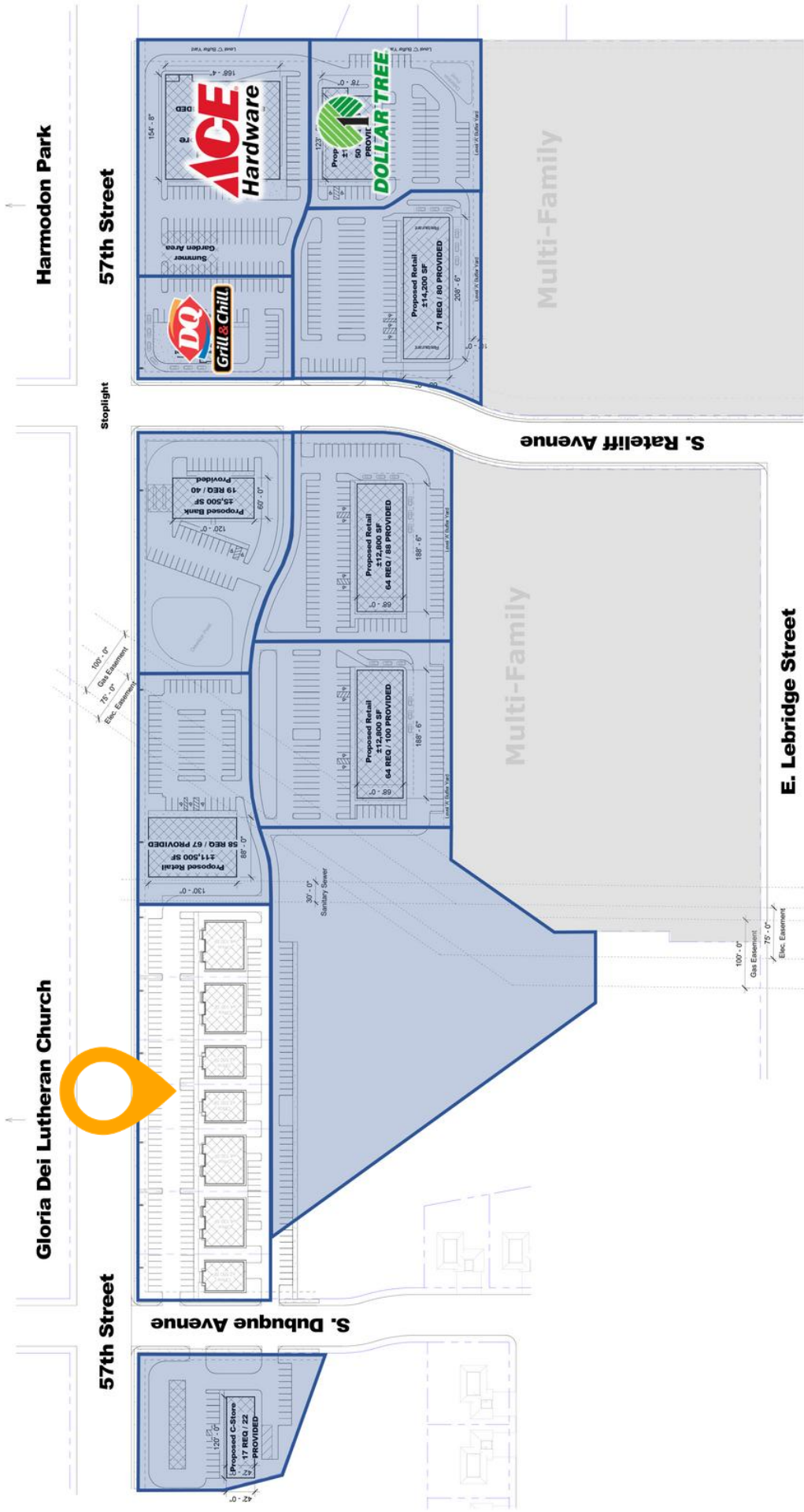
DEVELOPMENT RENDERING



HARVEST CREEK

57th + Highway 100

HARVEST CREEK MASTER PLAN



1 Overall Development Site Plan
Scale: 1" = 80'-0"



SITE PLAN

E. 57TH STREET



No.	Description	Date

OFFICES

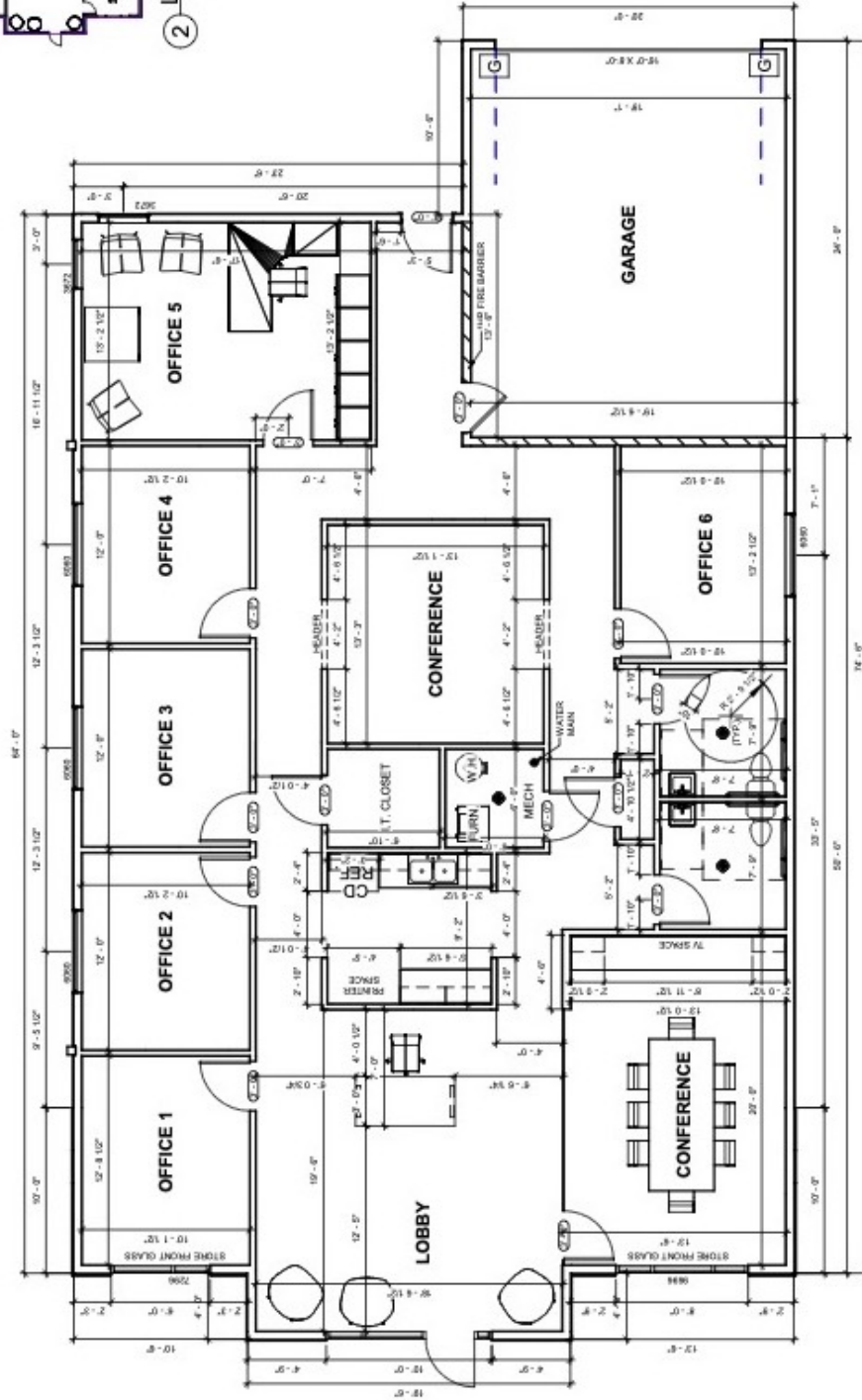
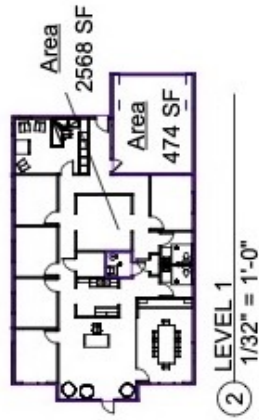
C101

Date: 8/8/2022 2:46:42 PM | Scale: 1" = 50'-0"

EMPIRE CO

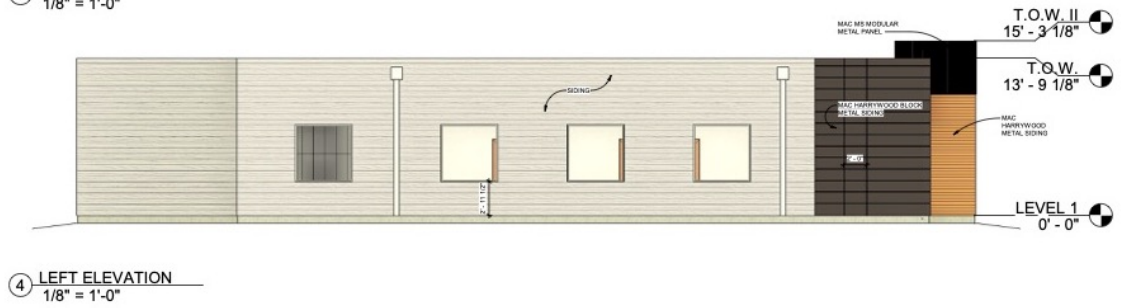
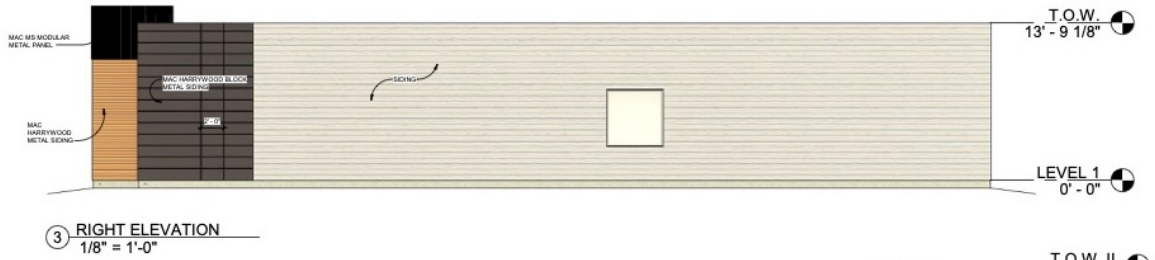
ITE

FLOORPLAN



① LEVEL 1
1/8" = 1'-0"

BUILDING DESIGN A



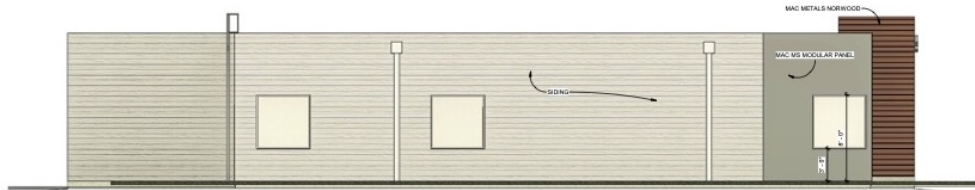
BUILDING DESIGN B



1 FRONT ELEVATION
1/8" = 1'-0"



2 REAR ELEVATION
1/8" = 1'-0"



3 LEFT ELEVATION
1/8" = 1'-0"



4 RIGHT ELEVATION
1/8" = 1'-0"

