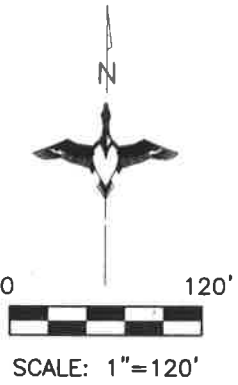
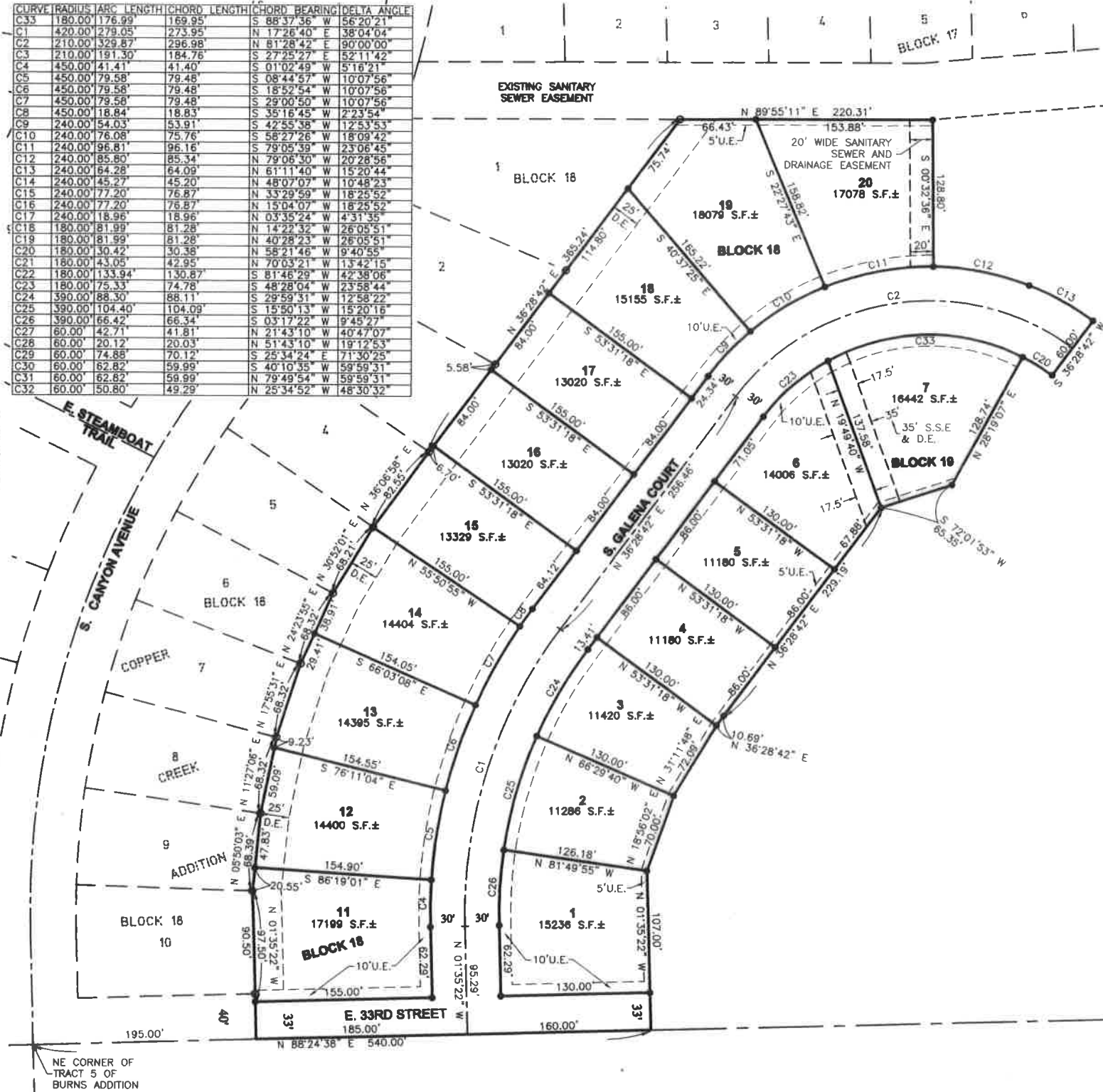


**PLAT OF LOTS 11, 12, 13, 14, 15, 16, 17, 18, 19 AND 20 IN BLOCK 18 AND LOTS 1, 2, 3, 4, 5, 6 AND 7 IN BLOCK 19 OF COPPER CREEK ADDITION**

AN ADDITION TO THE CITY OF SIOUX FALLS, MINNEHAHA COUNTY, SOUTH DAKOTA



UNPLATTED  
W1/2 NE1/4 30-101-48



CURVE	RADIUS	ARC LENGTH	CHORD LENGTH	CHORD BEARING	DELTA ANGLE
C33	180.00	176.99	169.95	S 88°37'36" W	56°20'21"
C13	420.00	279.05	273.95	N 17°26'40" E	38°04'04"
C3	210.00	329.87	296.98	N 81°28'42" E	90°00'00"
C23	210.00	191.30	184.76	S 27°25'27" E	52°11'42"
C5	450.00	41.41	41.40	S 01°02'49" W	5°16'21"
C25	450.00	79.58	79.48	S 08°44'57" W	10°07'56"
C6	450.00	79.58	79.48	S 18°52'54" W	10°07'56"
C7	450.00	79.58	79.48	S 29°00'50" W	10°07'56"
C8	450.00	18.84	18.83	S 35°16'45" W	2°23'54"
C9	240.00	54.03	53.91	S 42°55'38" W	12°53'53"
C10	240.00	76.08	75.76	S 58°27'28" W	18°09'42"
C11	240.00	96.81	96.16	S 79°05'39" W	23°08'45"
C12	240.00	85.80	85.34	N 79°06'30" W	20°28'56"
C14	240.00	84.28	84.09	N 61°11'40" W	15°20'44"
C14	240.00	45.27	45.20	N 48°07'07" W	10°48'23"
C15	240.00	77.20	76.87	N 33°29'59" W	18°25'52"
C16	240.00	77.20	76.87	N 15°04'07" W	18°25'52"
C17	240.00	18.96	18.96	N 03°35'24" W	4°31'35"
C18	180.00	81.99	81.28	N 14°22'32" W	26°05'51"
C19	180.00	81.99	81.28	N 40°28'23" W	26°05'51"
C20	180.00	30.42	30.38	N 58°21'46" W	9°40'55"
C21	180.00	43.05	42.95	N 70°03'21" W	13°42'15"
C22	180.00	133.94	130.87	S 81°46'29" W	42°38'06"
C23	180.00	75.33	74.78	S 48°28'04" W	23°58'44"
C24	390.00	88.30	88.11	S 29°59'31" W	12°58'22"
C25	390.00	104.40	104.09	S 15°50'13" W	15°20'16"
C26	390.00	66.42	66.34	S 03°17'22" W	9°45'27"
C27	60.00	42.71	41.81	N 21°43'10" W	40°47'07"
C28	60.00	20.12	20.03	N 51°43'10" W	19°12'53"
C29	60.00	74.88	70.12	S 25°34'24" E	71°30'25"
C30	60.00	62.82	59.99	S 40°10'35" W	59°59'31"
C31	60.00	62.82	59.99	N 79°49'54" W	59°59'31"
C32	60.00	50.80	49.29	N 25°34'52" W	48°30'32"

- LEGEND:**
- SET 5/8" REBAR W/CAP #6700
  - FD. MONUMENT
  - △ SECTION CORNER (AS NOTED)
  - (M) MEASURED DISTANCE
  - (R) RECORD INFORMATION
  - AC. ACRES
  - S.F. SQUARE FEET
  - U.E. UTILITY EASEMENT
  - R/W RIGHT-OF-WAY
  - N.T.S. NOT TO SCALE
  - PREVIOUSLY PLATTED LINE
  - RIGHT OF WAY LINE

**AREA TABLE**

STREETS	1.54 AC.±
LOTS	5.53 AC.±
TOTAL	7.07 AC.±



PREPARED BY:

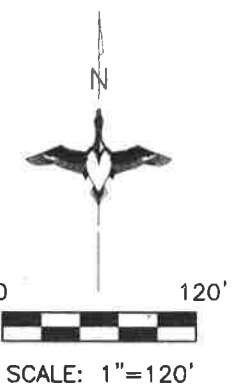


Land Surveying and GPS Consulting  
211 E. 14th Street Suite 100  
Sioux Falls, South Dakota 57104  
Phone: (605) 339-8901 FAX: (605) 274-8951



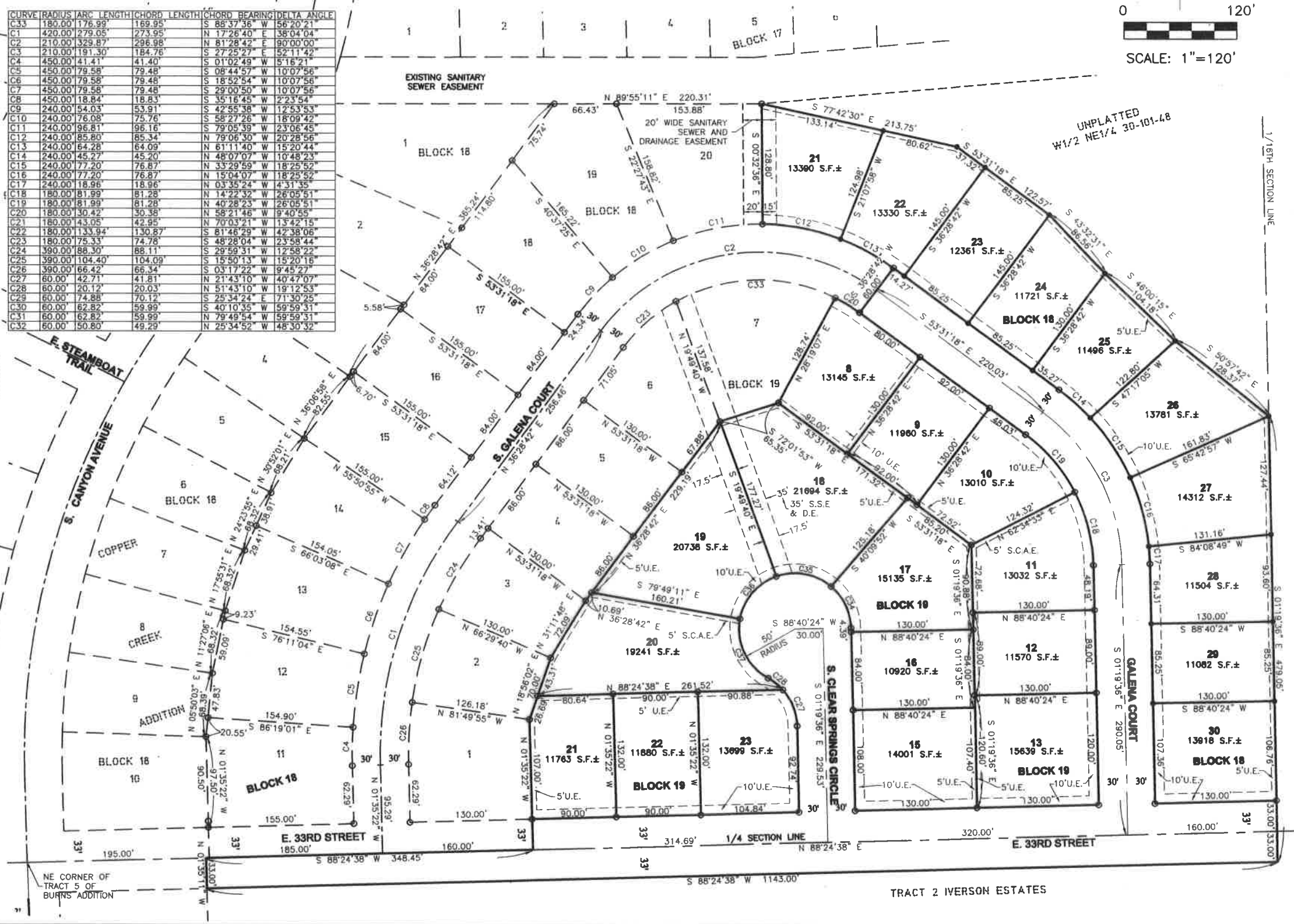
**PLAT OF LOTS 21, 22, 23, 24, 25, 26, 27, 28, 29 AND 30 IN BLOCK 18 AND LOTS 8, 9, 10, 11, 12, 13, 15, 16, 17, 18, 19, 20, 21, 22 AND 23 IN BLOCK 19 OF COPPER CREEK ADDITION**

AN ADDITION TO THE CITY OF SIOUX FALLS, MINNEHAHA COUNTY, SOUTH DAKOTA



CURVE	RADIUS	ARC LENGTH	CHORD LENGTH	CHORD BEARING	DELTA ANGLE
C34	60.00'	50.80'	49.29'	N 25°34'52\"	48°30'32\"
C35	60.00'	62.82'	59.99'	N 79°49'54\"	59°59'31\"
C36	60.00'	62.82'	59.99'	S 40°10'35\"	59°59'31\"
C37	60.00'	74.88'	70.12'	S 25°34'24\"	71°30'25\"

CURVE	RADIUS	ARC LENGTH	CHORD LENGTH	CHORD BEARING	DELTA ANGLE
C33	180.00'	176.99'	169.95'	S 88°37'36\"	56°20'21\"
C1	420.00'	279.05'	273.95'	N 17°26'40\"	38°04'04\"
C2	210.00'	329.87'	296.98'	N 81°28'42\"	90°00'00\"
C3	210.00'	191.30'	184.78'	S 27°25'23\"	52°11'42\"
C4	450.00'	41.41'	41.40'	S 01°02'49\"	5°16'21\"
C5	450.00'	79.58'	79.48'	S 08°44'57\"	10°07'56\"
C6	450.00'	79.58'	79.48'	S 18°52'54\"	10°07'56\"
C7	450.00'	79.58'	79.48'	S 29°00'50\"	10°07'56\"
C8	450.00'	18.84'	18.83'	S 35°16'45\"	2°23'54\"
C9	240.00'	54.03'	53.91'	S 42°55'38\"	12°53'53\"
C10	240.00'	76.08'	75.76'	S 58°27'26\"	18°09'42\"
C11	240.00'	96.81'	96.16'	S 79°05'39\"	23°06'45\"
C12	240.00'	85.80'	85.34'	N 79°06'30\"	20°28'56\"
C13	240.00'	64.28'	64.09'	N 61°11'40\"	15°20'44\"
C14	240.00'	45.27'	45.20'	N 48°07'07\"	10°48'23\"
C15	240.00'	77.20'	76.87'	N 33°29'59\"	18°25'52\"
C16	240.00'	77.20'	76.87'	N 15°04'07\"	18°25'52\"
C17	240.00'	18.96'	18.96'	N 03°35'24\"	4°31'35\"
C18	180.00'	81.99'	81.28'	N 14°22'32\"	26°05'51\"
C19	180.00'	81.99'	81.28'	N 40°28'23\"	26°05'51\"
C20	180.00'	30.42'	30.38'	N 58°21'48\"	9°40'55\"
C21	180.00'	43.05'	42.95'	N 70°03'21\"	13°42'15\"
C22	180.00'	133.94'	130.87'	S 81°46'29\"	42°38'06\"
C23	180.00'	75.33'	74.78'	S 48°28'04\"	23°58'44\"
C24	390.00'	88.30'	88.11'	S 29°59'31\"	12°58'22\"
C25	390.00'	104.40'	104.09'	S 15°50'13\"	15°20'16\"
C26	390.00'	66.42'	66.34'	S 03°17'22\"	9°45'27\"
C27	60.00'	42.71'	41.81'	N 21°43'10\"	40°47'07\"
C28	60.00'	20.12'	20.03'	N 51°43'10\"	19°12'53\"
C29	60.00'	74.88'	70.12'	S 25°34'24\"	71°30'25\"
C30	60.00'	62.82'	59.99'	S 40°10'35\"	59°59'31\"
C31	60.00'	62.82'	59.99'	N 79°49'54\"	59°59'31\"
C32	60.00'	50.80'	49.29'	N 25°34'52\"	48°30'32\"



AREA TABLE

STREETS	2.86 AC.±
LOTS	7.91 AC.±
TOTAL	10.77 AC.±



PREPARED BY:



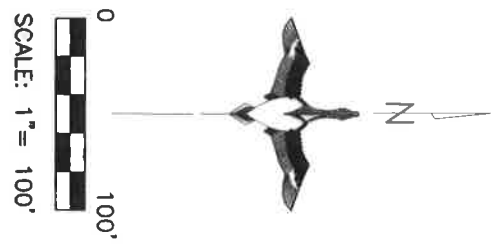
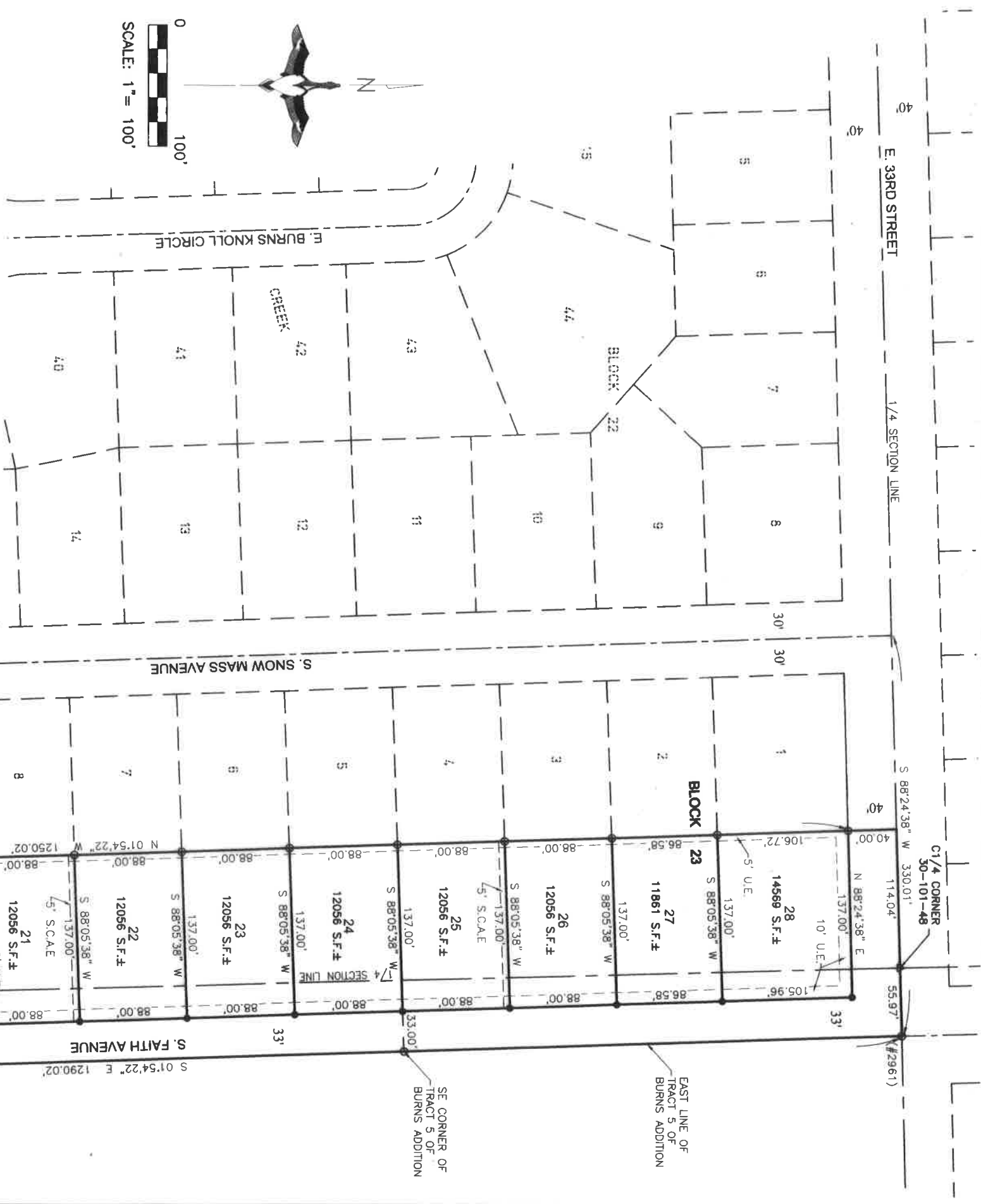
NOTES:  
BASIS OF BEARINGS IS UTM-ZONE 14.  
THIS PLAT WAS PREPARED WITHOUT THE BENEFIT OF A TITLE COMMITMENT.  
EASEMENTS OF RECORD WERE NOT RESEARCHED AND ARE NOT SHOWN ON THE PLAT.

#21-623 JEB

**PIMDWAY**  
Land Surveying and GPS Consulting  
211 E. 14th Street Suite 100  
Sioux Falls, South Dakota 57104  
Phone: (605) 339-8901 FAX: (605) 274-8951

# PLAT OF LOTS 15, 16, 17, 18, 19, 20, 21, 22, 23, 24, 25, 26, 27 AND 28 IN BLOCK 23 OF COPPER CREEK 2ND ADDITION

AN ADDITION TO THE CITY OF SIOUX FALLS, MINNEHAHA COUNTY, SOUTH DAKOTA.



COURSE RADIIUS ARC LENGTH CHORD LENGTH CHORD BEARING DEVIYA ANGLE  
 C1 667.00 159.81 59.79 N 00°38'46" E 5°08'17"

AREA TABLE		
STREETS	1.10	AC.±
LOTS	3.93	AC.±
TOTAL	5.03	AC.±



ARBA MAP N.T.S.  
 SECTION 30, T101N, R49W  
 5TH P.M.

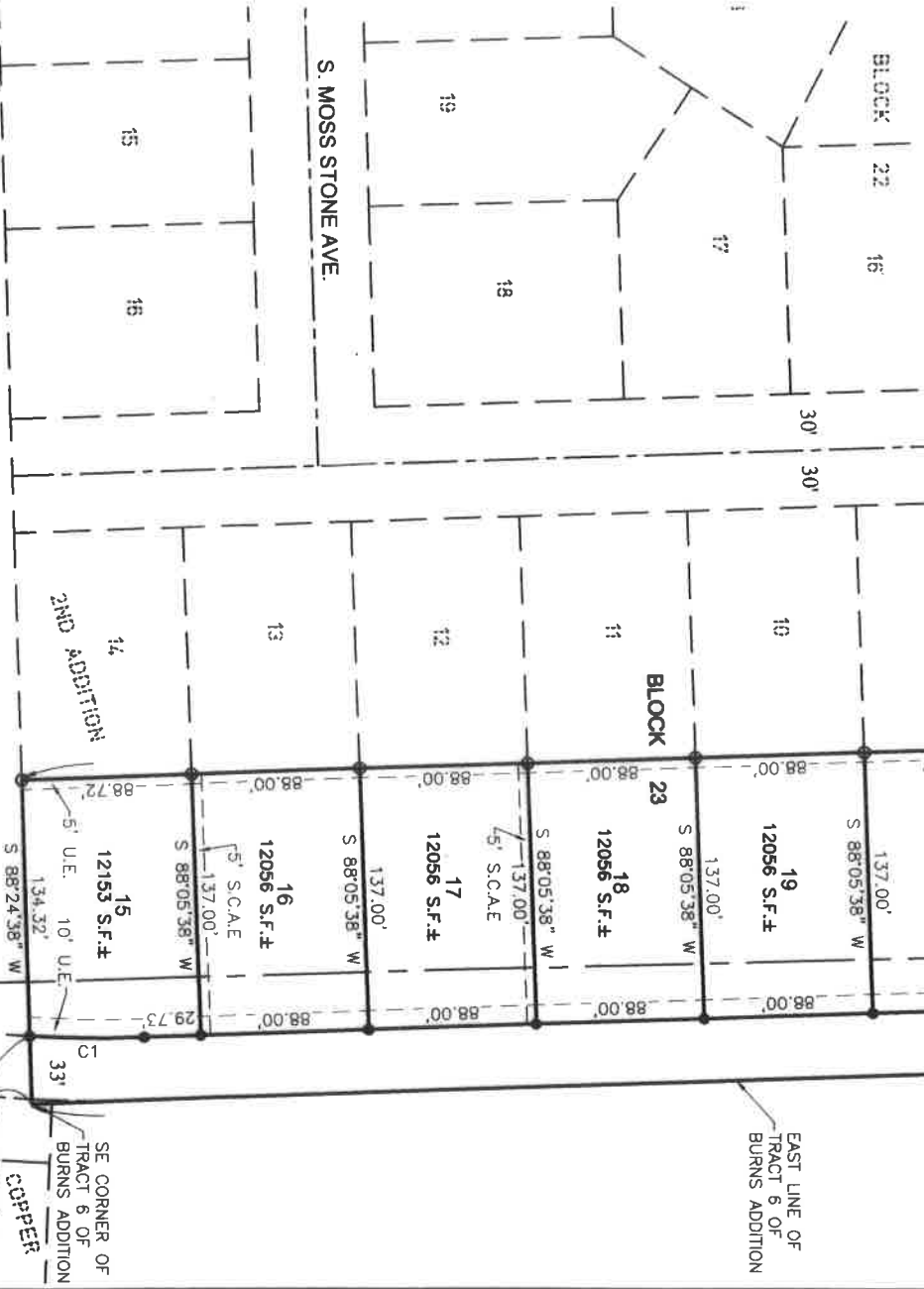


**LEGEND:**

- SET 5/8" REBAR W/CAP #6700
- FOUND MONUMENT (#6700 UNLESS OTHERWISE NOTED)
- △ SECTION CORNER
- R/W RIGHT-OF-WAY
- PREVIOUSLY PLATTED LINE
- EASEMENT LINE
- N.T.S. NOT TO SCALE
- U.E. UTILITY EASEMENT
- S.C.A.E SUMP COLLECTION ACCESS EASEMENT

NOTES:  
 BASIS OF BEARINGS IS UTM-ZONE 14

THIS PLAT WAS PREPARED WITHOUT THE BENEFIT OF A TITLE COMMITMENT  
 EASEMENTS OF RECORD WERE NOT RESEARCHED AND ARE NOT SHOWN ON THE PLAT.

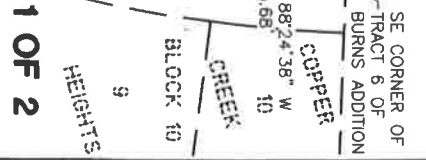


PREPARED BY:



Land Surveying and GPS Consulting  
 211 E. 14th Street Suite 100  
 Sioux Falls, South Dakota 57104  
 Phone: (605) 339-8901 FAX:(605) 274-8951

UNPLATTED  
 SW 1/4 30-101-48

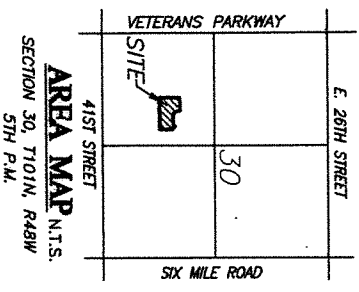
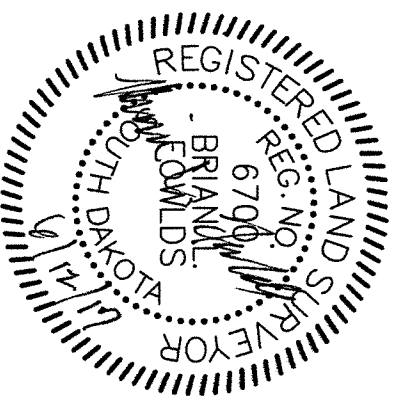
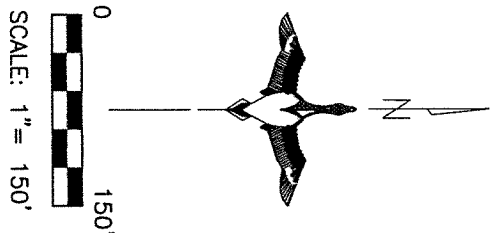


**PLAT OF LOT 16 IN BLOCK 21; LOT 18 IN BLOCK 22; AND LOTS 11, 12, 13 AND 14  
IN BLOCK 23 OF COPPER CREEK 2ND ADDITION  
TO THE CITY OF SIOUX FALLS, MINNEHAHA COUNTY, SOUTH DAKOTA.**



CURVE	RADIUS	ARC LENGTH	CHORD LENGTH	CHORD BEARING	DELTA ANGLE
C28	55.00'	86.09'	77.57'	S 46°44'52" E	89°40'59"
C29	25.00'	39.13'	35.26'	S 46°44'52" E	89°40'59"
C30	86.00'	67.70'	65.93'	S 68°46'16" E	45°38'11"
C31	85.00'	63.34'	63.73'	S 23°55'42" E	44°02'49"

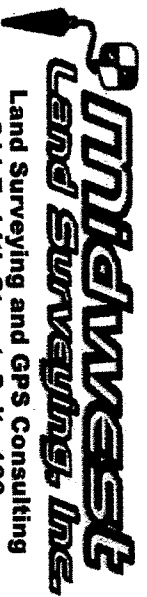
- LEGEND:**
- SET 5/8" REBAR W/CAP #6700
  - FOUND MONUMENT
  - △ SECTION CORNER
  - R/W RIGHT-OF-WAY
  - PREVIOUSLY PLATTED LINE
  - - - EASEMENT LINE
  - N.T.S. NOT TO SCALE
  - U.E. UTILITY EASEMENT
  - S.C.A.E. SWAMP COLLECTION ACCESS EASEMENT



**AREA TABLE**

STREETS	0.63	AC.±
LOTS	1.67	AC.±
TOTAL	2.30	AC.±

PREPARED BY:



Land Surveying and GPS Consulting  
211 E. 14th Street Suite 100  
Sioux Falls, South Dakota 57104  
Phone: (605) 339-8901 FAX: (605) 274-8951

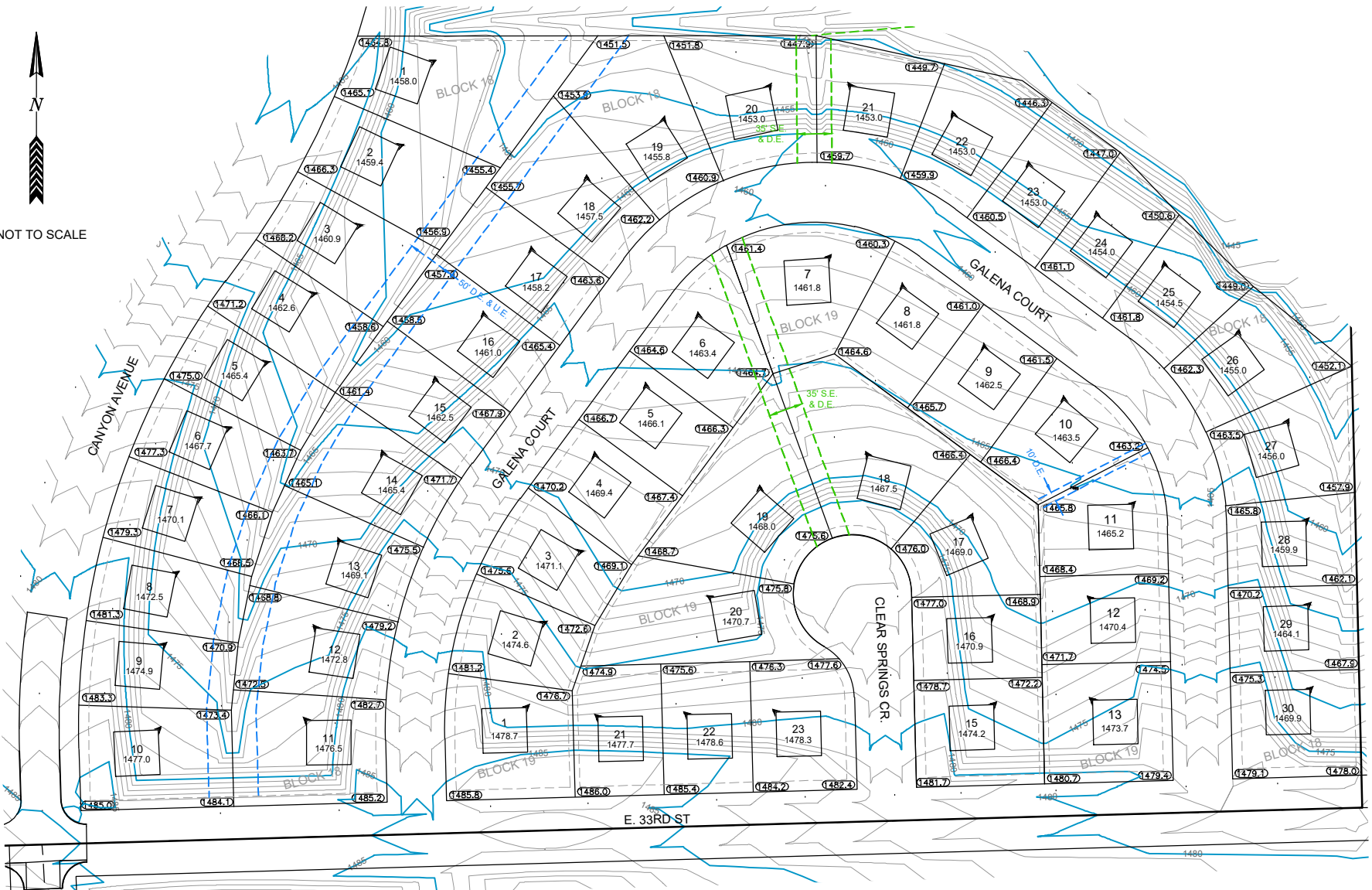
NOTES:

BASIS OF BEARINGS IS UTM-ZONE 14  
THIS PLAT WAS PREPARED WITHOUT THE BENEFIT  
OF A TITLE COMMITMENT

EASEMENTS OF RECORD WERE NOT RESEARCHED  
AND ARE NOT SHOWN ON THE PLAT.

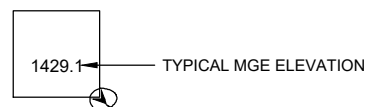


NOT TO SCALE



**GRADING:**

- 5' CONTOUR (PROPOSED) — 1490 —
- 1' CONTOUR (PROPOSED) — —



TYPICAL MGE ELEVATION  
 "ARROW" INDICATES PROBABLE CORNER(S) OF STRUCTURE TO WHICH MGE IS APPLICABLE

**MINIMUM GROUND ELEVATION**

MINIMUM GROUND ELEVATION (MGE): IS THE MINIMUM FINISHED GROUND ELEVATION AT THE HOME. THIS IS THE TOP OF BLACK DIRT UNDER THE GRASS, OR THE TOP OF LANDSCAPE ROCK OR OTHER LANDSCAPE MATERIAL AT THE LOWEST EXPOSED PART OF THE HOUSE.

THE MGE SHOULD NOT BE CONSTRUED AS BEING APPLICABLE TO ALL AREAS OF THE BUILDING FOUNDATION, NOR AS A FINISHED FLOOR ELEVATION FOR A WALKOUT BASEMENT.

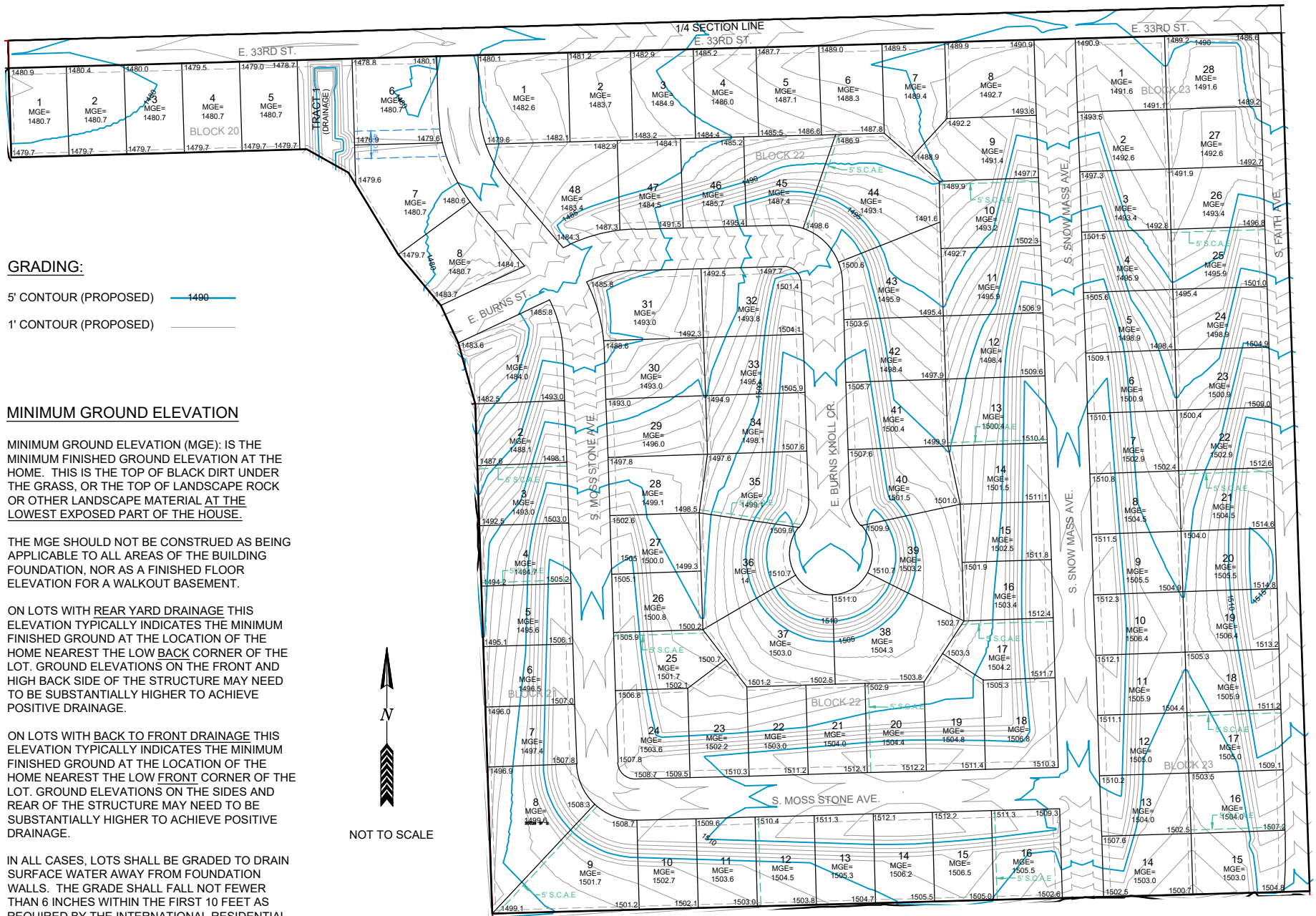
ON LOTS WITH REAR YARD DRAINAGE THIS ELEVATION TYPICALLY INDICATES THE MINIMUM FINISHED GROUND AT THE LOCATION OF THE HOME NEAREST THE LOW BACK CORNER OF THE LOT.

GROUND ELEVATIONS ON THE FRONT AND HIGH BACK SIDE OF THE STRUCTURE MAY NEED TO BE SUBSTANTIALLY HIGHER TO ACHIEVE POSITIVE DRAINAGE.

ON LOTS WITH BACK TO FRONT DRAINAGE THIS ELEVATION TYPICALLY INDICATES THE MINIMUM FINISHED GROUND AT THE LOCATION OF THE HOME NEAREST THE LOW FRONT CORNER OF THE LOT. GROUND ELEVATIONS ON THE SIDES AND REAR OF THE STRUCTURE MAY NEED TO BE SUBSTANTIALLY HIGHER TO ACHIEVE POSITIVE DRAINAGE.

IN ALL CASES, LOTS SHALL BE GRADED TO DRAIN SURFACE WATER AWAY FROM FOUNDATION WALLS. THE GRADE SHALL FALL NOT FEWER THAN

6 INCHES WITHIN THE FIRST 10 FEET AS REQUIRED BY THE INTERNATIONAL RESIDENTIAL CODE.



**GRADING:**

- 5' CONTOUR (PROPOSED) ——— 1490 ———
- 1' CONTOUR (PROPOSED) ———

**MINIMUM GROUND ELEVATION**

MINIMUM GROUND ELEVATION (MGE): IS THE MINIMUM FINISHED GROUND ELEVATION AT THE HOME. THIS IS THE TOP OF BLACK DIRT UNDER THE GRASS, OR THE TOP OF LANDSCAPE ROCK OR OTHER LANDSCAPE MATERIAL AT THE LOWEST EXPOSED PART OF THE HOUSE.

THE MGE SHOULD NOT BE CONSTRUED AS BEING APPLICABLE TO ALL AREAS OF THE BUILDING FOUNDATION, NOR AS A FINISHED FLOOR ELEVATION FOR A WALKOUT BASEMENT.

ON LOTS WITH REAR YARD DRAINAGE THIS ELEVATION TYPICALLY INDICATES THE MINIMUM FINISHED GROUND AT THE LOCATION OF THE HOME NEAREST THE LOW BACK CORNER OF THE LOT. GROUND ELEVATIONS ON THE FRONT AND HIGH BACK SIDE OF THE STRUCTURE MAY NEED TO BE SUBSTANTIALLY HIGHER TO ACHIEVE POSITIVE DRAINAGE.

ON LOTS WITH BACK TO FRONT DRAINAGE THIS ELEVATION TYPICALLY INDICATES THE MINIMUM FINISHED GROUND AT THE LOCATION OF THE HOME NEAREST THE LOW FRONT CORNER OF THE LOT. GROUND ELEVATIONS ON THE SIDES AND REAR OF THE STRUCTURE MAY NEED TO BE SUBSTANTIALLY HIGHER TO ACHIEVE POSITIVE DRAINAGE.

IN ALL CASES, LOTS SHALL BE GRADED TO DRAIN SURFACE WATER AWAY FROM FOUNDATION WALLS. THE GRADE SHALL FALL NOT FEWER THAN 6 INCHES WITHIN THE FIRST 10 FEET AS REQUIRED BY THE INTERNATIONAL RESIDENTIAL CODE.

