



# K&J INDUSTRIAL

Bakker Landing | I-29 exit

## Brand New Shop Space

LEASED

2325 Enterprise Avenue  
Tea, SD 57064



### size

LEASED  
South Bay: 9,920 sqft



### price

\$8.00 per sqft (NNN)



### details:

- Includes office space, plus 2 restrooms
- Mezzanine storage space
- Asphalt lot with concrete apron
- 20' sidewalls
- 16'x14' overhead doors
- Reznor Heaters



### layout

Open warehouse, office, and two bathrooms.



### location

Property is located in the Bakker Landing development near Southwest Sioux Falls (SD), with close proximity to Interstate 29, Highway 106 and West 85th Street.

Information deemed reliable but not guaranteed.



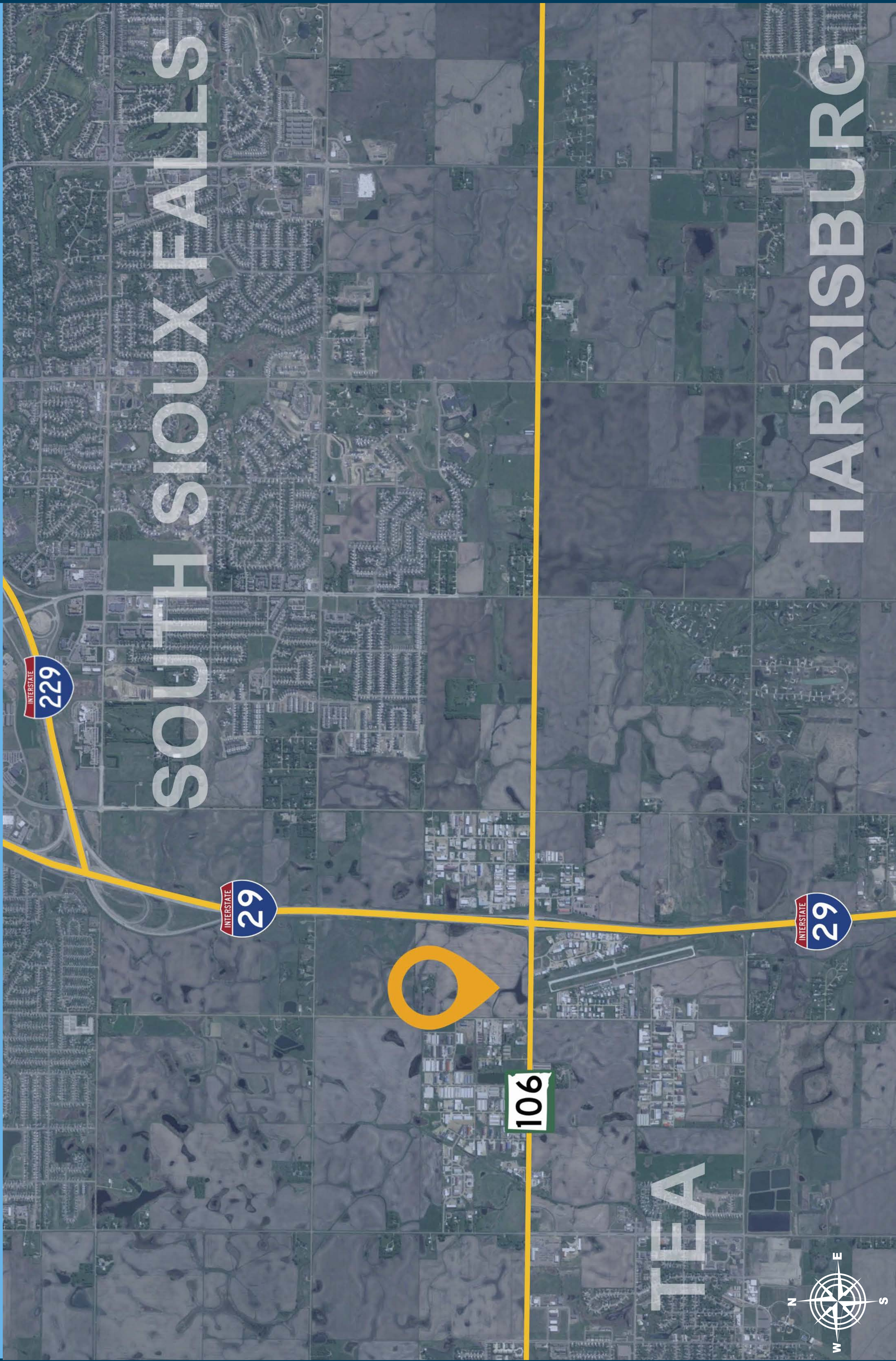
Lake Lorraine | 2571 S. Westlake Drive #100  
Sioux Falls, South Dakota 57106  
VBCLink.com | 605.361.8211



605.376.0127  
Ryan@VBCLink.com



# LOCATION MAP



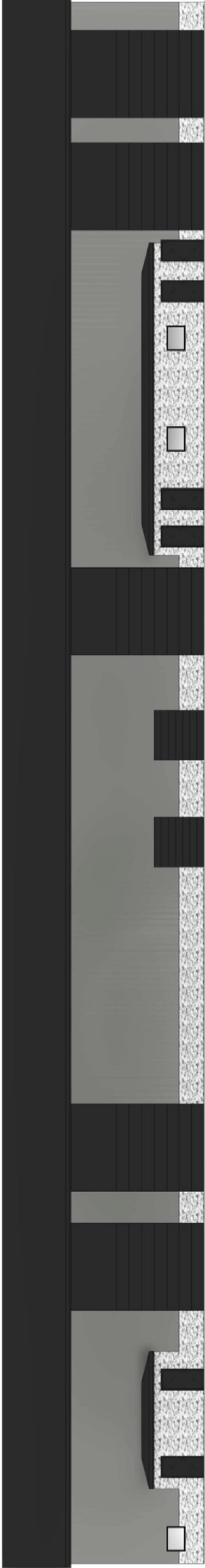


# AREA MAP





# ELEVATIONS



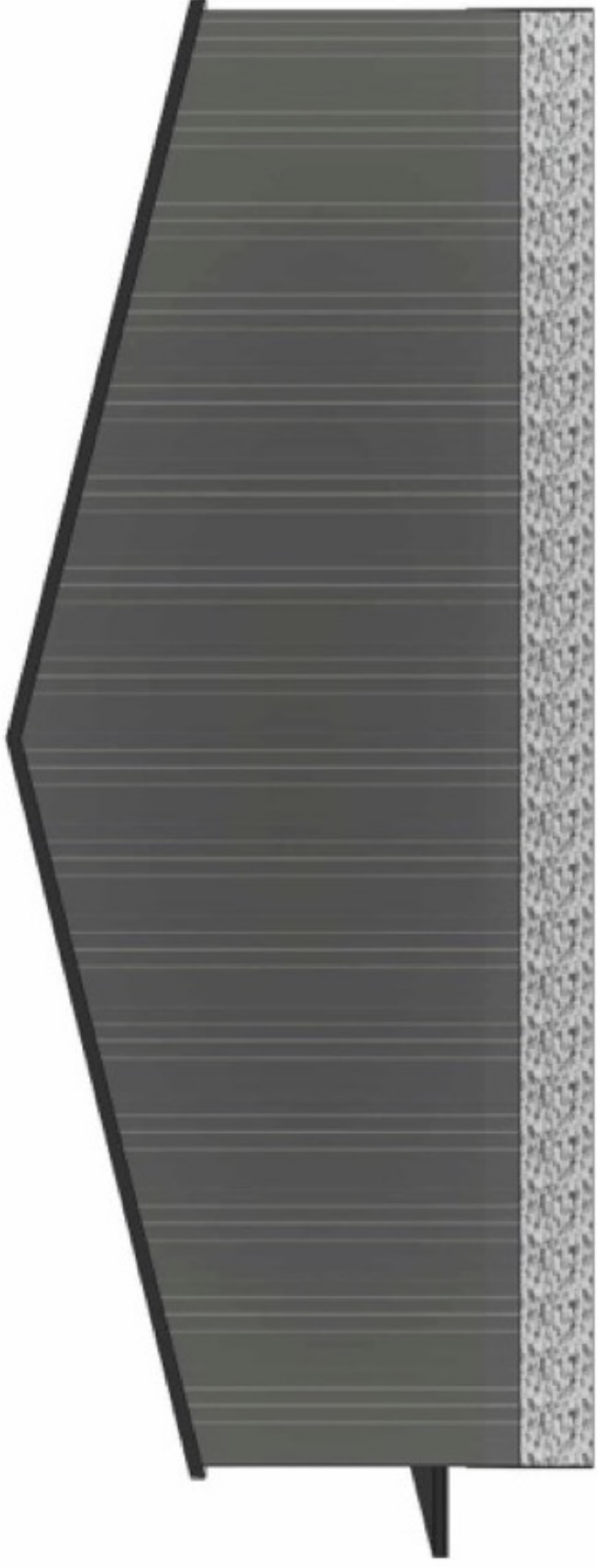
4 South  
1/16" = 1'-0"



3 North  
1/16" = 1'-0"



2 West  
1/16" = 1'-0"



1 East  
1/16" = 1'-0"

**Javers Construction**  
(605)-940-3802 JaversConstruction.com

Karlson, Javers  
K&J Warehouse

No.	Description	Date

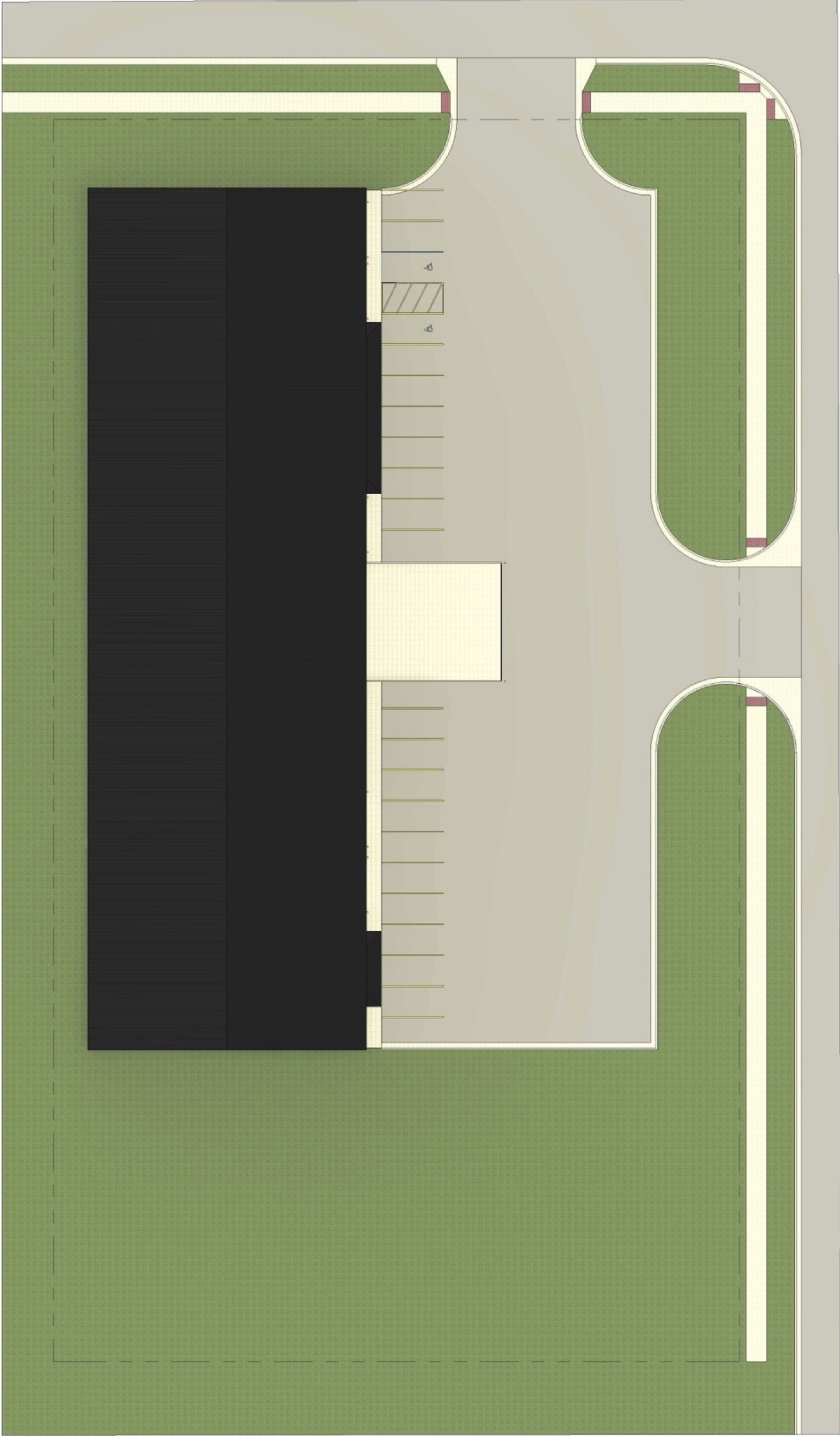
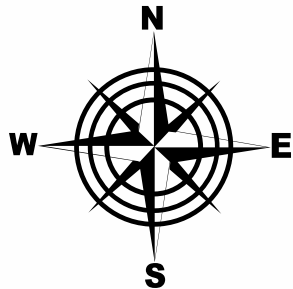
## Elevations

Project number	Project Number
Date	5/3/2022
Drawn by	Author
Checked by	Checker
Scale 1/16" = 1'-0"	

102



# SITE PLAN



1 Site  
1" = 30'-0"

**Javers Construction**  
(605)-940-3802 JaversConstruction.com

Karlson, Javers  
K&J Warehouse

No.	Description	Date

Siteview			
Project number	Project Number		
Date	5/3/2022	Author	103
Checked by	Checker	Scale 1" = 30'-0"	



FLOOR PLAN

