



DRIVE-THRU ENDCAP

81st + Minnesota

Located on a Walmart-Anchored Corridor



7201 South Minnesota Avenue
Sioux Falls, SD 57108



size

North Endcap: 2,000 sqft



price

\$32 per square foot NNN



delivery

Landlord to deliver the Premises as a warm dark shell.



rent

\$35 per square foot



location

Hard NW corner of 81st Street & Minnesota Avenue. This is a full-access intersection with a planned/future stoplight.



co-tenancy

Walmart SuperCenter, Starbucks, Scooters Coffee, Burger King, OrangeTheory Fitness, Aldi, Dollar Tree, T-Mobile, Jersey Mike's Subs, Nektar Juice Bar and many more.

Property is co-listed with Raquel Blount of Lloyd Companies
Information deemed reliable but not guaranteed.



Lake Lorraine | 2571 Westlake Drive #100
Sioux Falls, South Dakota 57106
VBclick.com | 605.361.8211



605.376.0127
Ryan@VBclick.com

AREA RETAIL MAP



NORTH VIEW



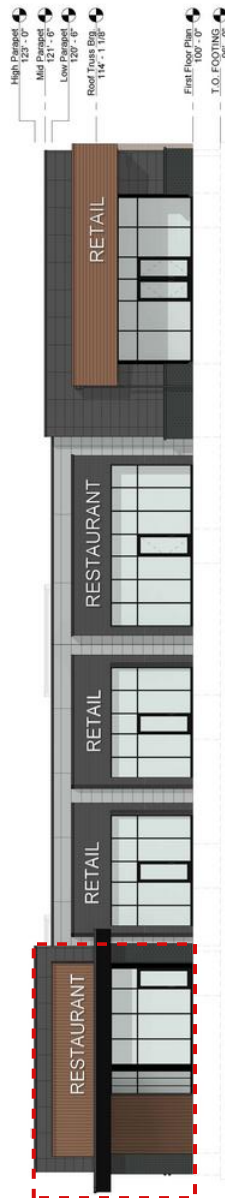
SOUTH VIEW



SITE OVERVIEW

EXTERIOR ELEVATIONS

Plan Notes



1 West Elevation
Scale: 1/8" = 1'-0"



2 South Elevation
Scale: 1/8" = 1'-0"



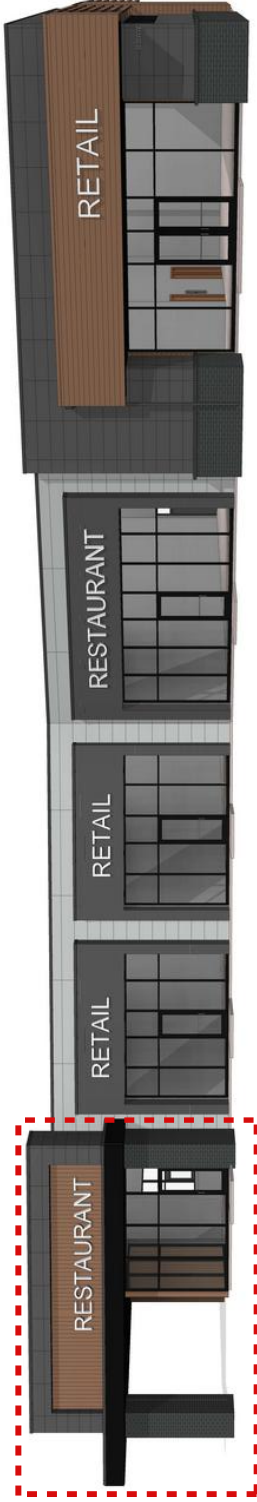
3 East Elevation
Scale: 1/8" = 1'-0"



4 North Elevation
Scale: 1/8" = 1'-0"

<p>MDA Architects, Inc. ARCHITECTS 1000 W. 10TH STREET SUITE 100 ST. LOUIS, MO 63102 Phone: 314.433.4411 Fax: 314.433.4411</p>	<p>Exterior Elevations</p>	
	<p>Project No. 20084 Date: 12/23/2023 Drawn By: BDC</p>	
<p>This plan is copyrighted and shall be used only for the building shown and no other building without the written permission of MDA Architects, Inc.</p>		<p>Revision: 1 Project No. 20084 Date: 12/23/23 Scale: A3.0</p>

EXTERIOR PERSPECTIVES



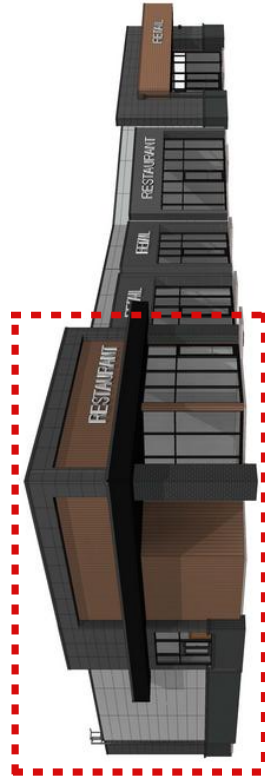
1 West Perspective

Scale:



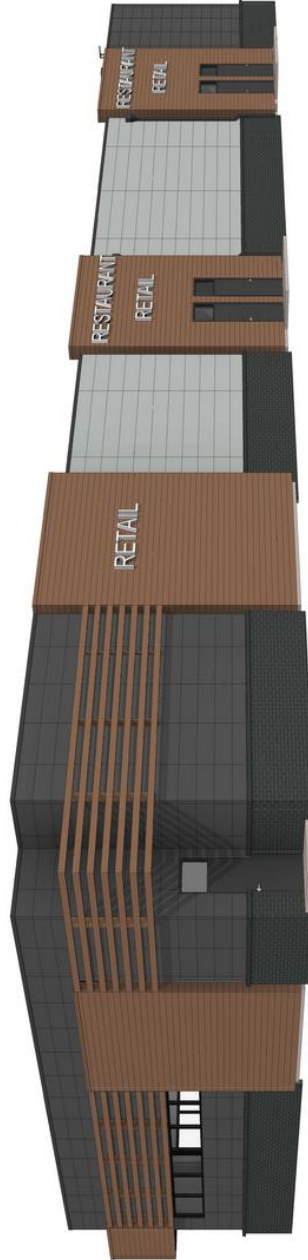
2 Southwest Perspective-02

Scale:



3 Northwest Perspective

Scale:

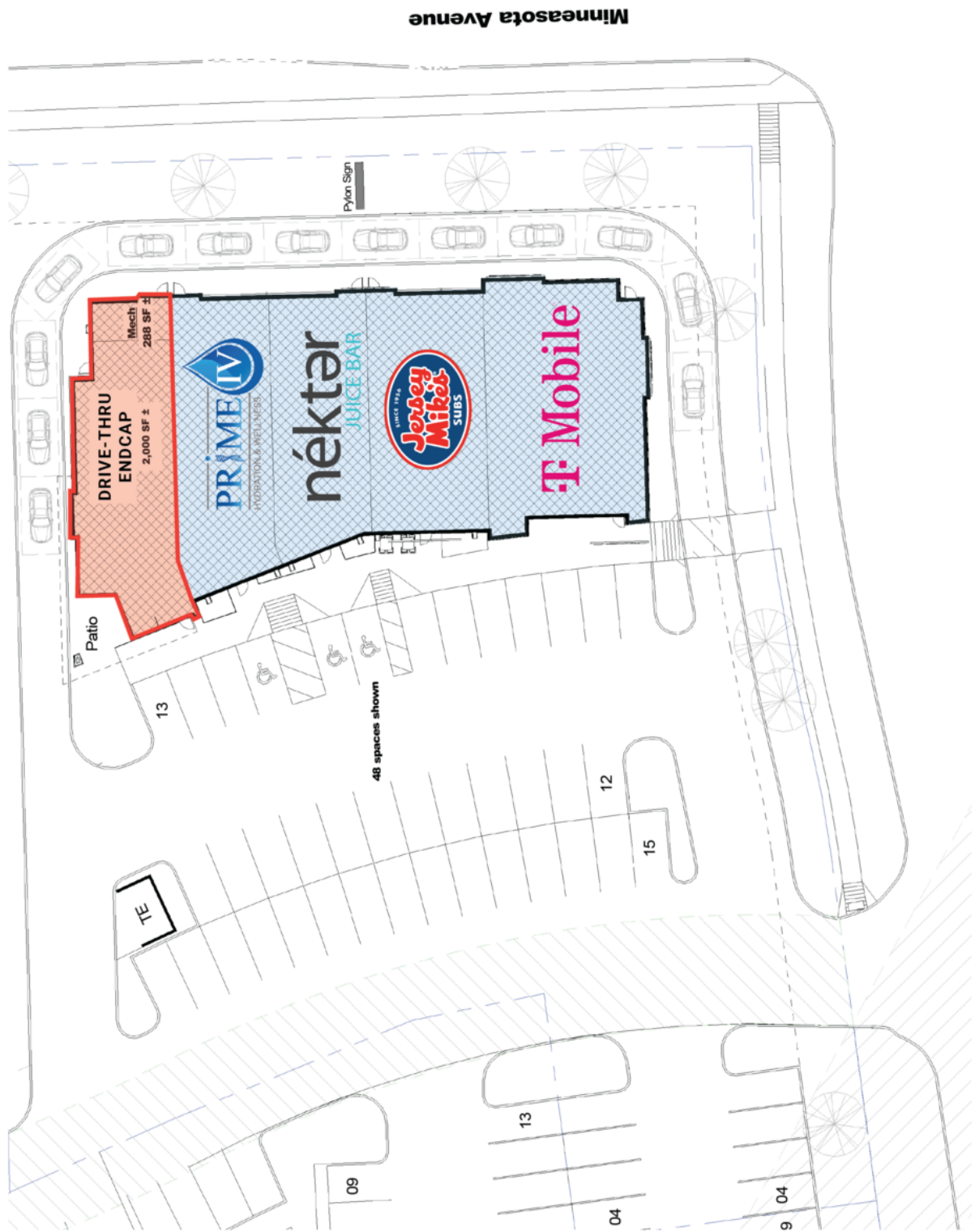
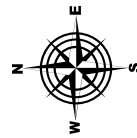


4 Southeast Perspective

Scale:

 <p>VanDewalle Architects, LLC 1000 S. Highway 101, Suite 100 Stone Mountain, GA 30087 Phone: 770.486.4411</p>	<p>Copyright © 2024 by VanDewalle Architects, LLC. All rights reserved. This plan is copyright property of VanDewalle Architects, LLC. No part of this plan may be reproduced or transmitted in any form or by any means, electronic or mechanical, including photocopying, recording, or by any information storage and retrieval system, without the prior written permission of VanDewalle Architects, LLC.</p>		
	<p>Project No. 202401</p>	<p>Revision 2</p>	<p>Date: 1/22/2025</p>
<p>Exterior Perspectives</p>		<p>Drawn By: BAC</p>	<p>A3.1</p>

SITEPLAN



PHOTOS

