



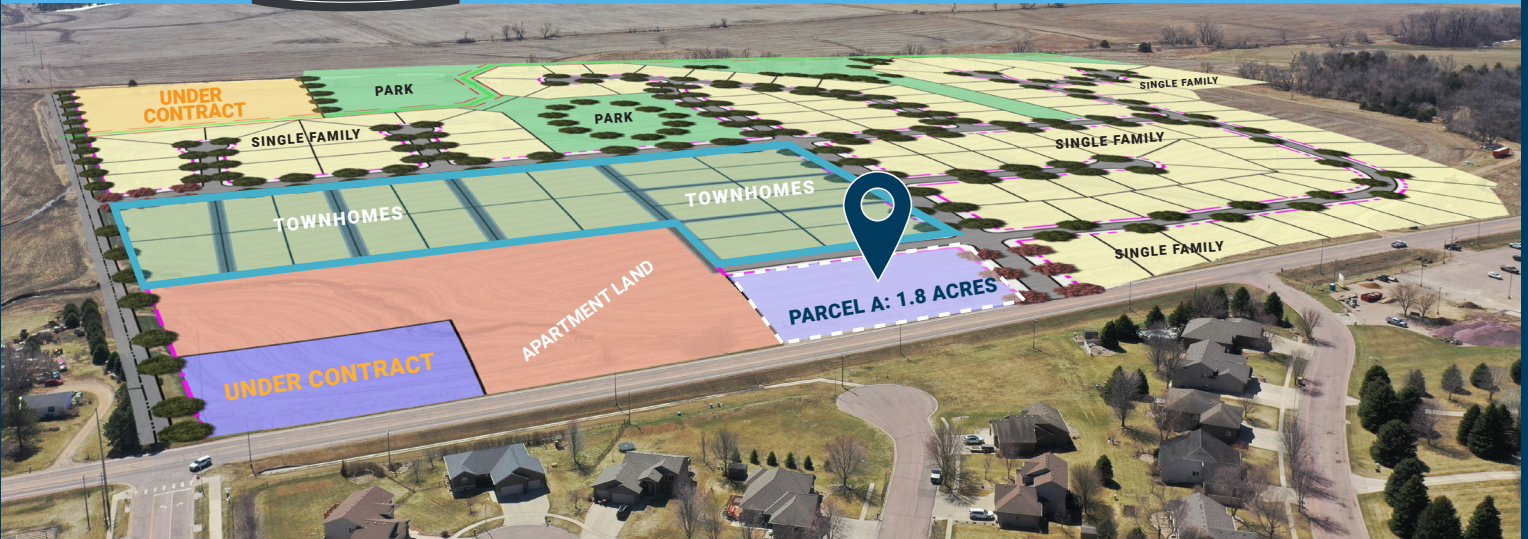
# ASPEN RIDGE

BRANDON, SD

**FOR  
SALE**

## COMMERCIAL LOTS

TBD East Aspen Boulevard | Brandon, SD 57005



### SIZE

Parcel A: 1.8 acres  
Parcel B: UNDER CONTRACT



### PRICE

\$10 per square foot



### LOCATION

High profile Aspen Boulevard commercial corner lots, located south of the Brandon Golf Course.



### SITE DELIVERY

Late-2023



### SHOVEL-READY

Commercial parcels will be delivered annexed, zoned, level-graded, streets built and water/sewer stubbed to the property line.



### CO-TENANCY

Brandon Golf Course, McHardy Park, Brandon Elementary East, Alliance Communications, US Post Office, and George Boom Funeral Home.

Information deemed reliable but not guaranteed.



**VBCLINK.COM | 605.361.8211**

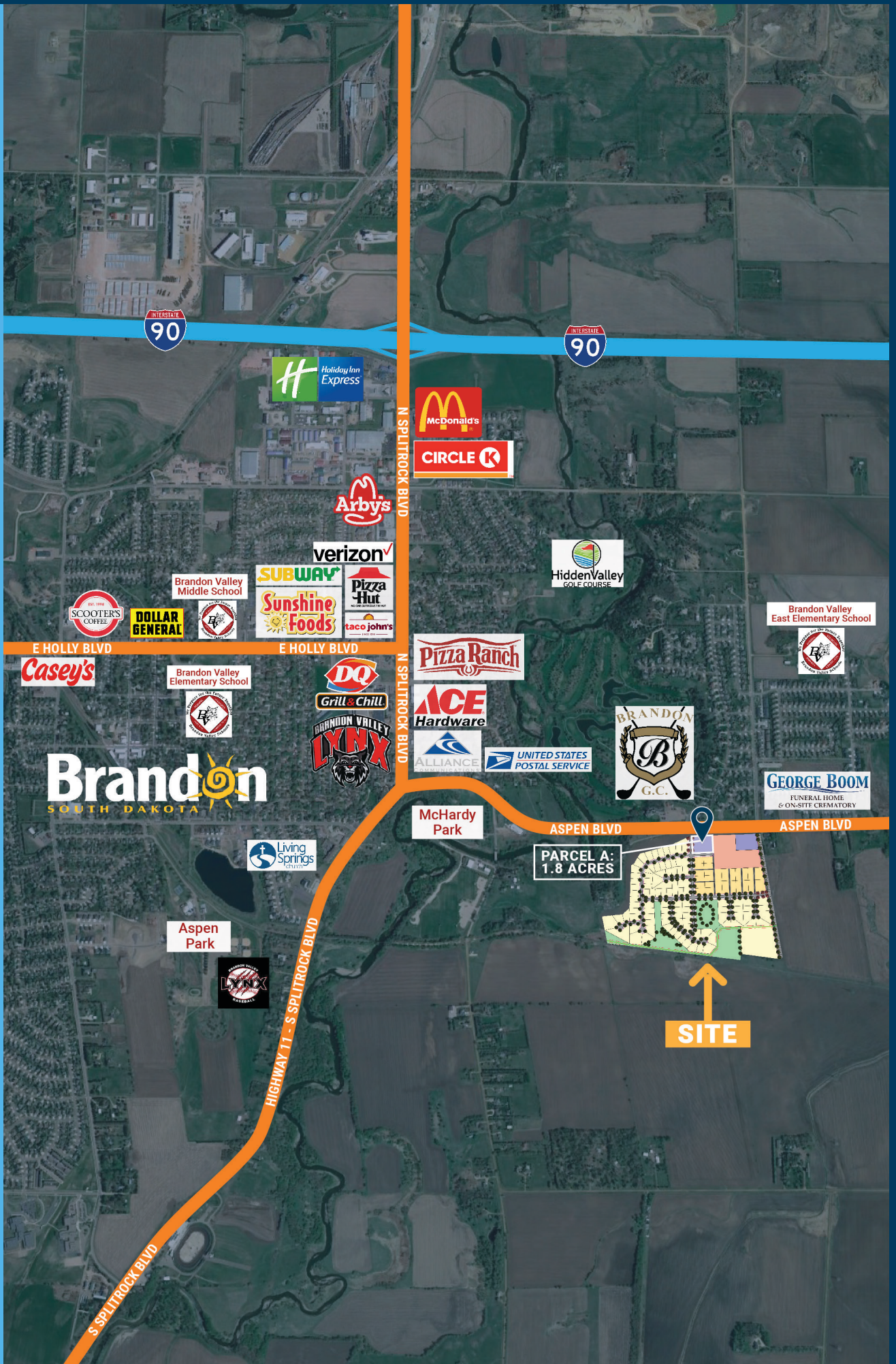
2571 South Westlake Drive #100 | Sioux Falls, South Dakota 57106



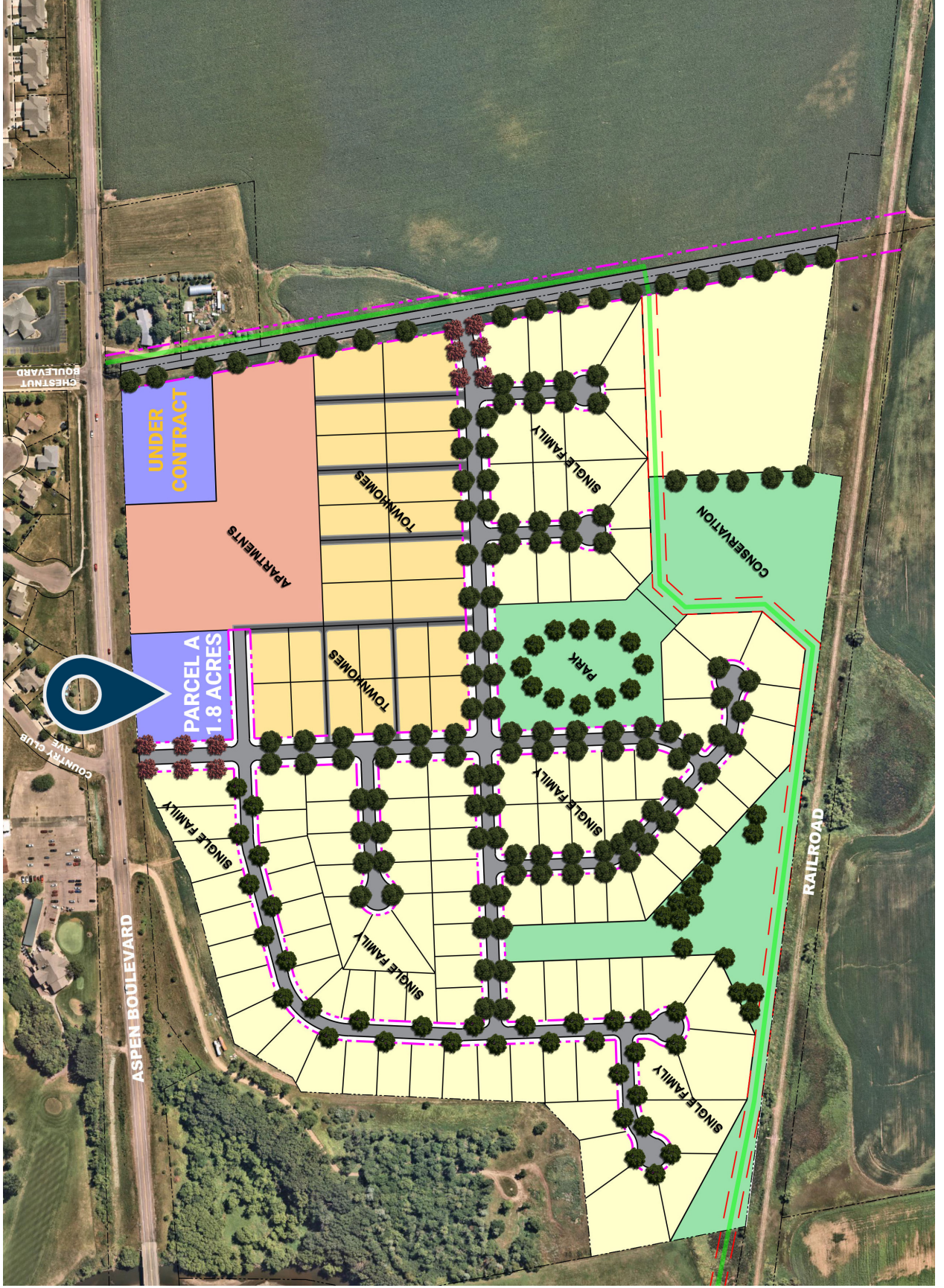
**605.376.0127**

Ryan@VBclick.com

# CITY OF BRANDON



# SITE PLAN



SITE PHOTOS



**ASPEN RIDGE**

BRANDON, SD