



SYCAMORE COMMERCE CENTER

10TH + SYCAMORE

FORMER BANK OPERATIONS CENTER

400 South Sycamore Ave | Suites 100, 101 & 102 | Sioux Falls, SD 57110



SIZE

32,398 sqft
(Can be subdivided)



PRICE

\$9.00 PSF (NNN)
NNN Estimate: \$1.91 PSF



FF&E

Current workstations and furnishings available to be included or removed pending new tenant's needs.



LOCATION

Located at the corner of East 10th Street & Sycamore Avenue



DELIVERY

April 1, 2024



LAYOUT

Professional office space with open floorplan concept with perimeter executive offices, multiple conference rooms, break room, data/server room, multiple restrooms, receiving/mail/flex space.

Information deemed reliable but not guaranteed.



VBCLINK.COM | 605.361.8211

2571 South Westlake Drive #100 | Sioux Falls, South Dakota 57106



605.376.0127

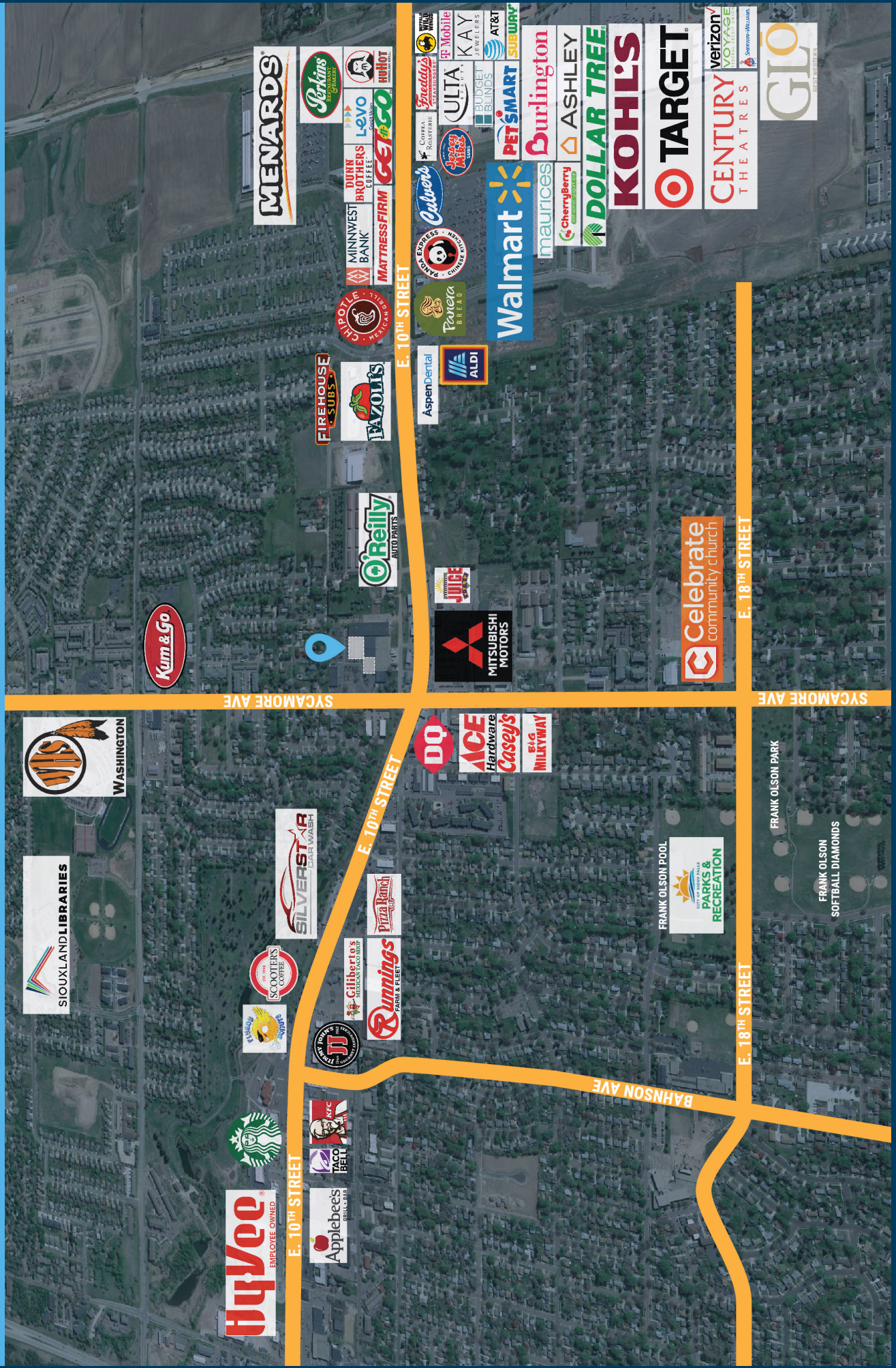
Ryan@VBCLink.com



605.310.4509

Mike.Knudson@VBCLink.com

AREA MAP

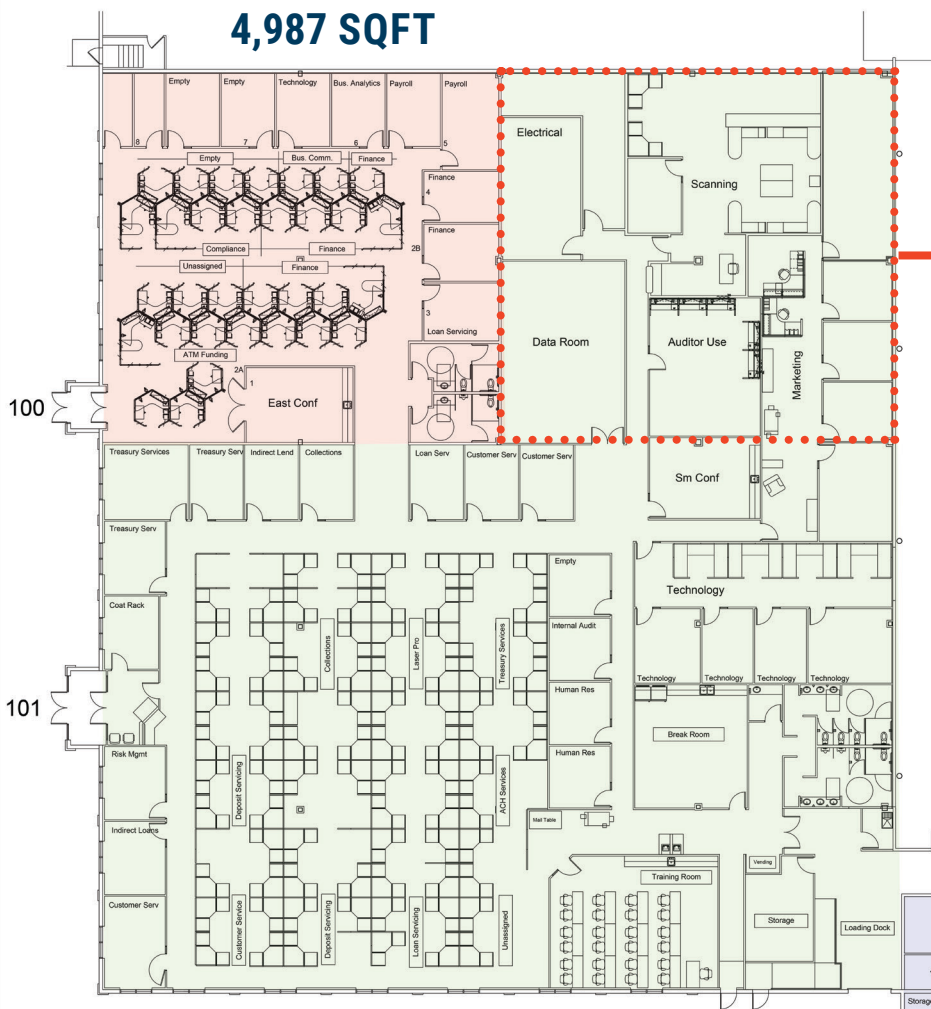


PARCEL MAP



FLOOR PLAN

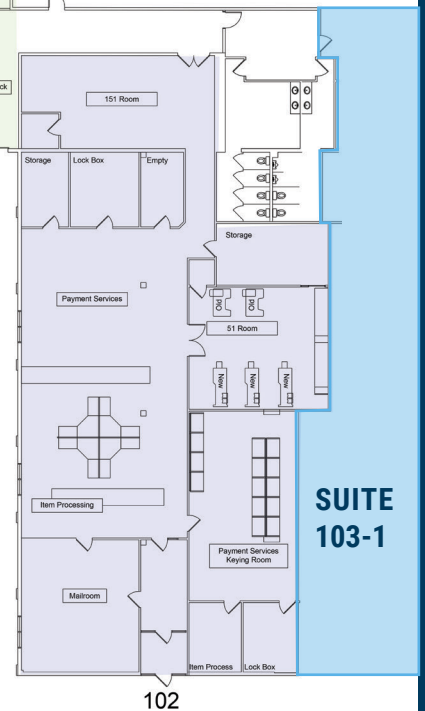
SUITE 100:
4,987 SQFT



5,080 SQFT
(COULD BE ADDED
TO SUITE 100)

SUITE 101:
20,460 SQFT

SUITE 102:
5,665 SQFT
(COULD BE ADDED WITH
SUITE 103-1: 4,100 SQFT
TO EQUAL 9,765 SQFT)



* APPROXIMATE SQFT

EXTERIOR PHOTOS



INTERIOR PHOTOS



INTERIOR PHOTOS



INTERIOR PHOTOS

