

**FOR
LEASE**

PETTIGREW PROFESSIONAL BUILDING

DOWNTOWN OFFICE BUILDING



505 W 9TH ST, SUITE 203
SIOUX FALLS, SD, 57104



SIZE

484 sq. ft.



PRICE

\$1,200/month
(gross including utilities)



LOCATION

Second Floor of the
Pettigrew Professional
Building in Downtown
Sioux Falls

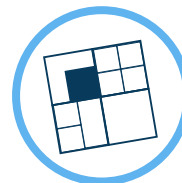


LAYOUT

Office:
11 ft x 15 ft

Reception Area:
11 ft x 16 ft

Office/Conference Room:
11 ft x 13 ft



OCCUPANCY

Available Immediately



COTENANCY

Kolbeck Law Office,
Attorneys Michael Hanson,
Randall Blake and Thomas
Blake's Offices, Faith Family
Church, Family Dollar and
Canfield

Information deemed reliable, but not guaranteed.

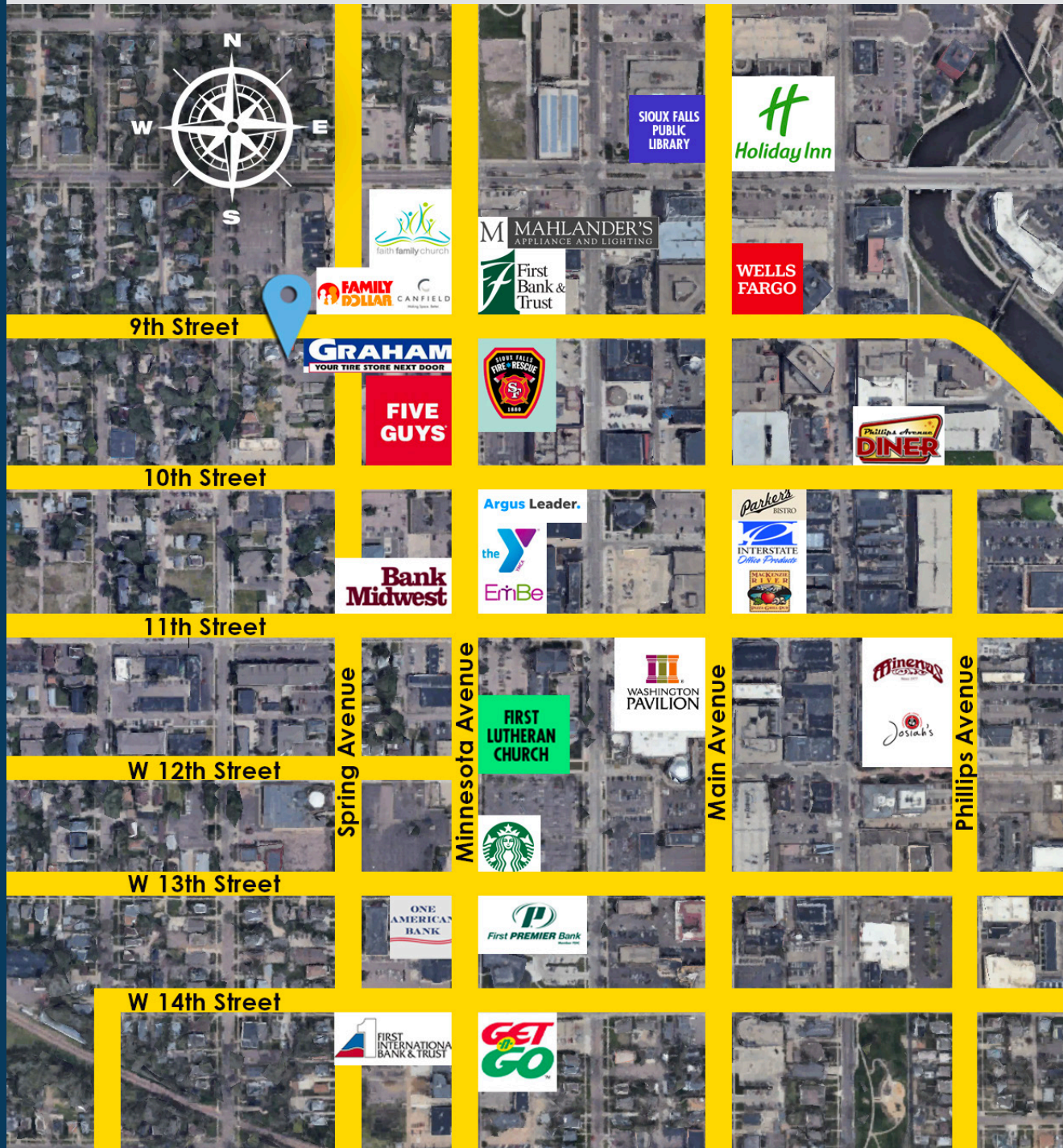


2571 S Westlake Drive #100
Sioux Falls, SD 57106
605.361.8211 | VBCcommercial.com

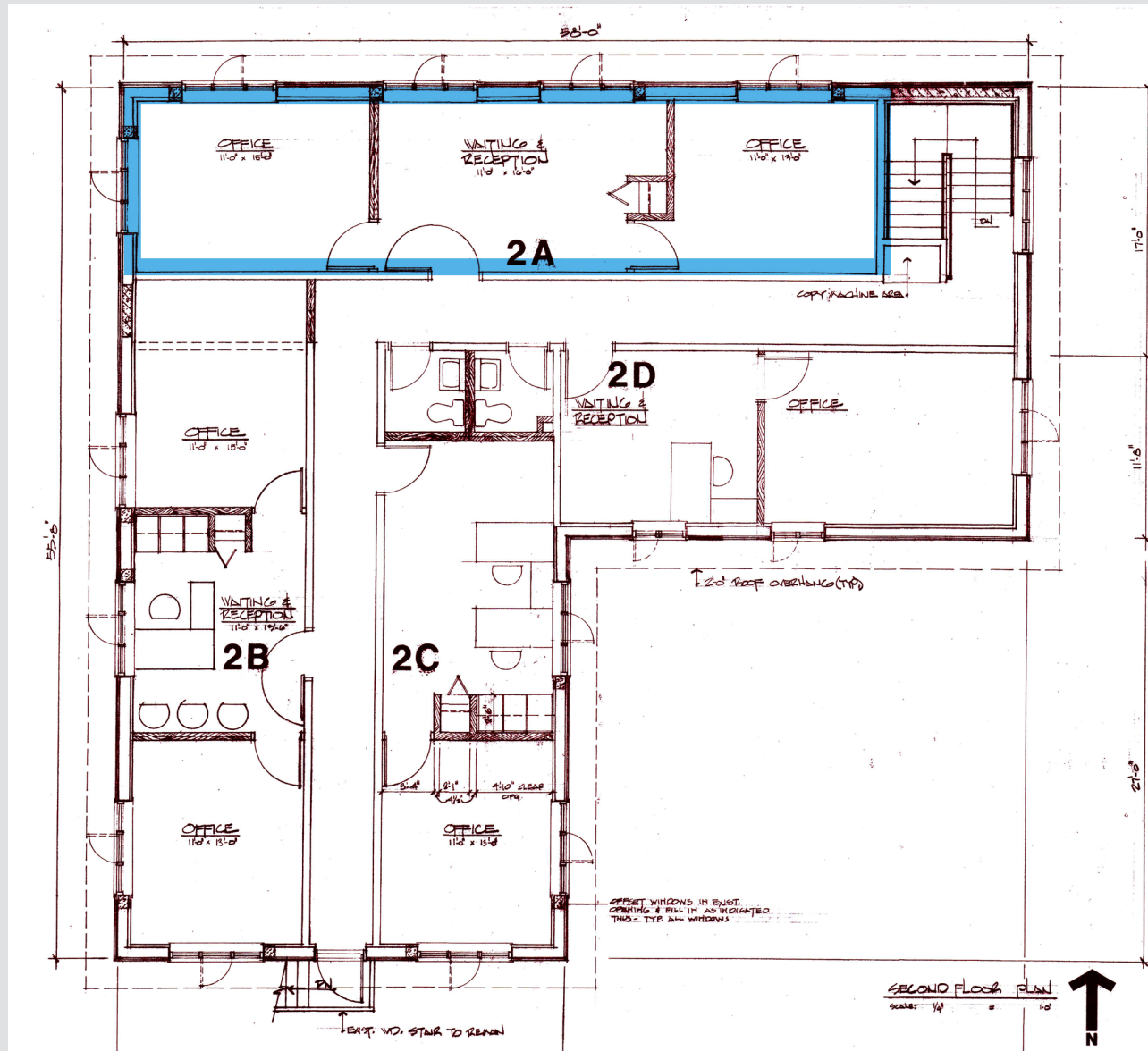


605.310.4509
mike.knudson@vbclink.com

AERIAL MAP



FLOOR PLAN



INTERIOR PHOTOS



EXTERIOR PHOTOS

