

HEATHER RIDGE OFFICE PARK

6330 South Western Avenue, Sioux Falls, SD 57108

SUITE 150

FOR
LEASE



Office Space in Established Neighborhood Near 69th and Western



SIZE

3,932 SF



PRICE

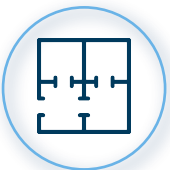
\$18.50 PSF
(NNN)

Estimated NNN
\$7.55 PSF



LOCATION

Just south of 69th St. on S. Western Avenue. This office park has ample parking and is visible to traffic with convenient access to nearby restaurants and retail.



LAYOUT

Office space includes 17 private offices, 2 conference rooms, kitchenette, supply storage area, 2 restrooms, and more. Call broker for showing instructions.



AVAILABLE

Move-In-Ready



CO-TENANCY

First Dakota Title, Bangs & McCullen Law Firm, Wells Fargo Advisors, Starbucks, McNally's Irish Pub, Faini Design Jewelry Studio, Daily Clean Food, 22 Ten Kitchen & Cocktails, The Bridges at 57th Street.

Information deemed reliable but not guaranteed.



(605)-361-8211 | vbclink.com

2571 S Westlake Dr #100 Sioux Falls SD 57106



(605)-351-5512

autumn.kaufhold@vbclink.com

AREA MAP

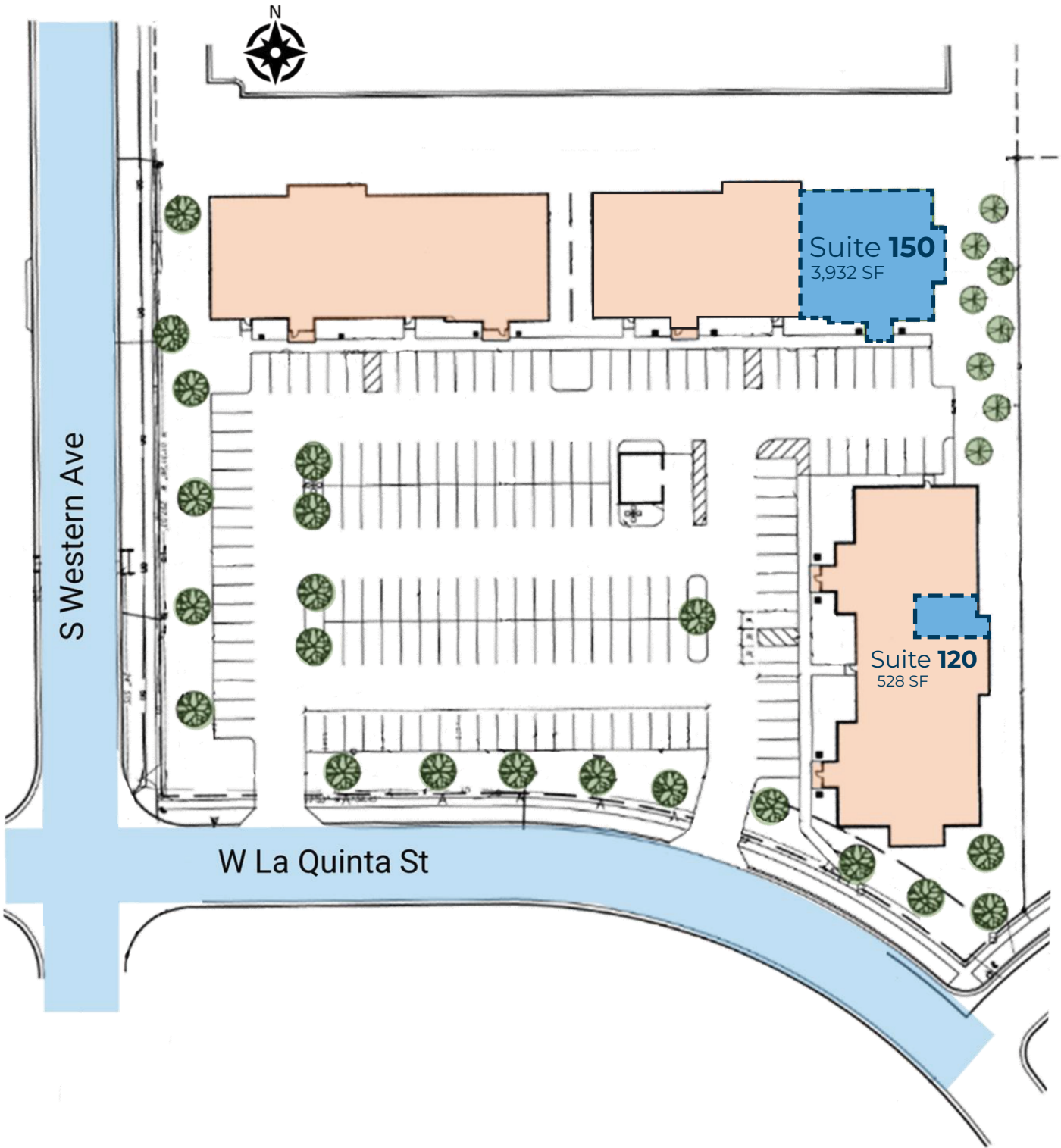


(605)-361-8211 | vbclink.com
2571 S Westlake Dr #100 Sioux Falls SD 57106



(605)-351-5512
autumn.kaufhold@vbclink.com

SITEPLAN



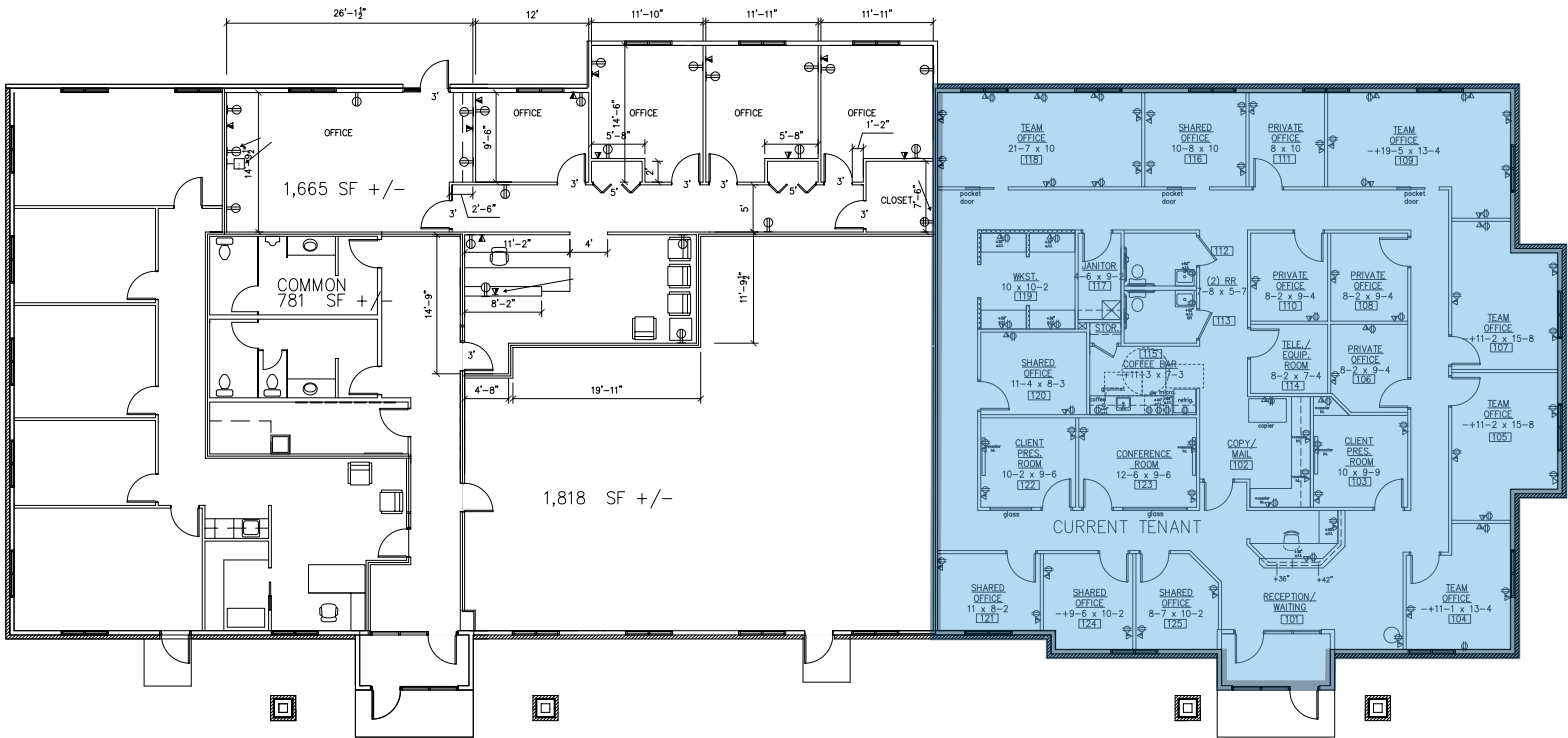
(605)-361-8211 | vbclink.com
2571 S Westlake Dr #100 Sioux Falls SD 57106



(605)-351-5512
autumn.kaufhold@vbclink.com

FLOORPLAN

Suite 150 3,932 SF



(605)-361-8211 | vbclink.com
2571 S Westlake Dr #100 Sioux Falls SD 57106



(605)-351-5512
autumn.kaufhold@vbclink.com

PHOTO GALLERY



(605)-361-8211 | vbclink.com
2571 S Westlake Dr #100 Sioux Falls SD 57106



(605)-351-5512
autumn.kaufhold@vbclink.com