

PLAT OF LOTS 25, 26, 27 AND 28 IN BLOCK 2; LOTS 1, 2, 3, 4, 5, 6, 7, 8, 9, 10, 11, 12, 13, 14, 15, 16, 16A, 16B, 16C, 17, 18, 19, 20, 21, 22 AND 23 IN BLOCK 3; LOTS 1, 2, 3, 4, 18, 19, 20, 21, 22, 23, 24, 25, 26, 27, 28, 29, 30, 31, 32, 33, 34, 35, 36, 37, 38, 39 AND 40 IN BLOCK 4; LOTS 1, 2 AND 3 IN BLOCK 5 OF MYDLAND ESTATES ADDITION

AN ADDITION TO THE CITY OF HARRISBURG, LINCOLN COUNTY, SOUTH DAKOTA.

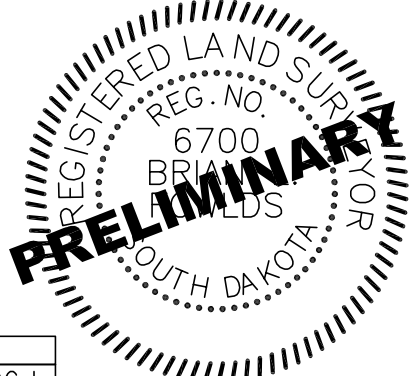


CURVE	RADIUS	ARC LENGTH	CHORD LENGTH	CHORD BEARING	DELTA ANGLE
C1	340.00'	133.38'	132.53'	S 10°11'29" W	22°28'37"
C2	260.00'	102.10'	101.45'	S 10°10'47" W	22°30'00"
C5	91.00'	49.33'	48.73'	N 75°32'24" W	31°03'38"
C6	25.00'	39.01'	35.17'	S 46°22'18" E	89°23'49"
C7	91.00'	20.16'	20.12'	N 53°27'23" W	12°41'46"
C8	25.00'	19.28'	18.81'	N 23°09'58" W	44°11'29"
C9	56.00'	12.17'	12.15'	N 39°08'57" W	12°27'15"
C10	56.00'	68.08'	63.97'	N 01°54'24" E	69°39'27"
C11	56.00'	51.01'	49.27'	N 62°49'57" E	52°11'40"
C12	56.00'	51.01'	49.27'	S 64°58'23" E	52°11'40"
C13	56.00'	68.08'	63.97'	S 04°02'49" E	69°39'27"
C14	56.00'	12.14'	12.11'	S 36°59'28" W	12°25'13"
C15	25.00'	19.32'	18.84'	S 21°03'55" W	44°16'15"
C16	25.00'	19.32'	18.84'	N 23°12'20" W	44°16'15"
C17	56.00'	12.14'	12.11'	N 39°07'54" W	12°25'08"
C18	56.00'	68.08'	63.97'	N 01°54'24" E	69°39'27"
C19	56.00'	51.01'	49.27'	N 62°49'57" E	52°11'40"
C20	56.00'	51.01'	49.27'	S 64°58'23" E	52°11'40"
C21	56.00'	68.08'	63.97'	S 04°02'49" E	69°39'27"
C22	56.00'	12.14'	12.11'	S 36°59'28" W	12°25'14"
C23	25.00'	19.32'	18.84'	S 21°03'55" W	44°16'15"
C24	91.00'	50.00'	49.37'	N 31°22'08" W	31°28'44"
C25	91.00'	22.17'	22.11'	N 08°39'05" W	13°57'22"
C26	58.00'	90.50'	81.59'	N 46°22'18" W	89°23'49"

LEGEND:

- SET 5/8" REBAR W/CAP #6700
- FD. MONUMENT
- △ SECTION CORNER
- (M) MEASURED DISTANCE
- (R) RECORD INFORMATION
- AC. ACRES
- S.F. SQUARE FEET
- E.S.L. EACH SIDE OF PROPERTY LINE
- U.E. UTILITY EASEMENT
- S.C.E. SUMP COLLECTION EASEMENT
- R/W RIGHT-OF-WAY
- N.T.S. NOT TO SCALE
- PREVIOUSLY PLATTED LINE
- RIGHT OF WAY LINE

AREA TABLE	
STREETS	4.785 AC.±
LOTS	15.484 AC.±
TOTAL	20.269 AC.±



SURVEYOR'S NOTE:

LOCATION OF THE FLOOD PLAIN ZONE WAS DIGITIZED FROM FLOOD INSURANCE RATE MAP PANEL 162 OF 550, MAP NUMBER 46083C0162C, MAP EFFECTIVE DATE APRIL 2, 2008. THE ACCURACY OF SAID FLOOD ZONE IS APPROXIMATE AND NOT BASED ON ANY FLOOD ELEVATION OR A FIELD SURVEY. NO WARRANTY IS PROVIDED FOR THE EXACT LOCATION OF THE FLOOD PLAIN THAT A SUBSEQUENT FLOOD ELEVATION SURVEY MAY DISCLOSE. *SUBJECT AREA PART OF LINCOLN COUNTY UNINCORPORATED AREAS 460277.

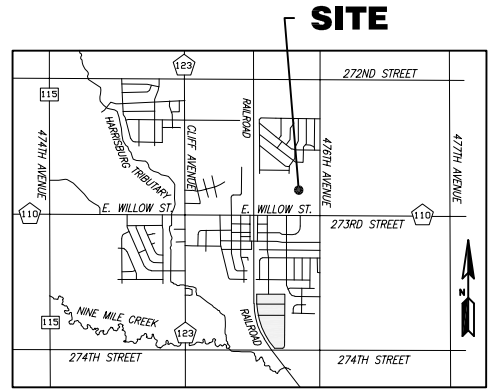
NOTES:
BASIS OF BEARINGS IS UTM-ZONE 14
THIS PLAT WAS PREPARED WITHOUT THE BENEFIT OF A TITLE COMMITMENT.

EASEMENTS OF RECORD WERE NOT RESEARCHED AND ARE NOT SHOWN ON THE PLAT.

PREPARED BY:



Land Surveying and GPS Consulting
211 E. 14th Street Suite 100
Sioux Falls, South Dakota 57104
Phone: (605) 339-8901 FAX: (605) 274-8951

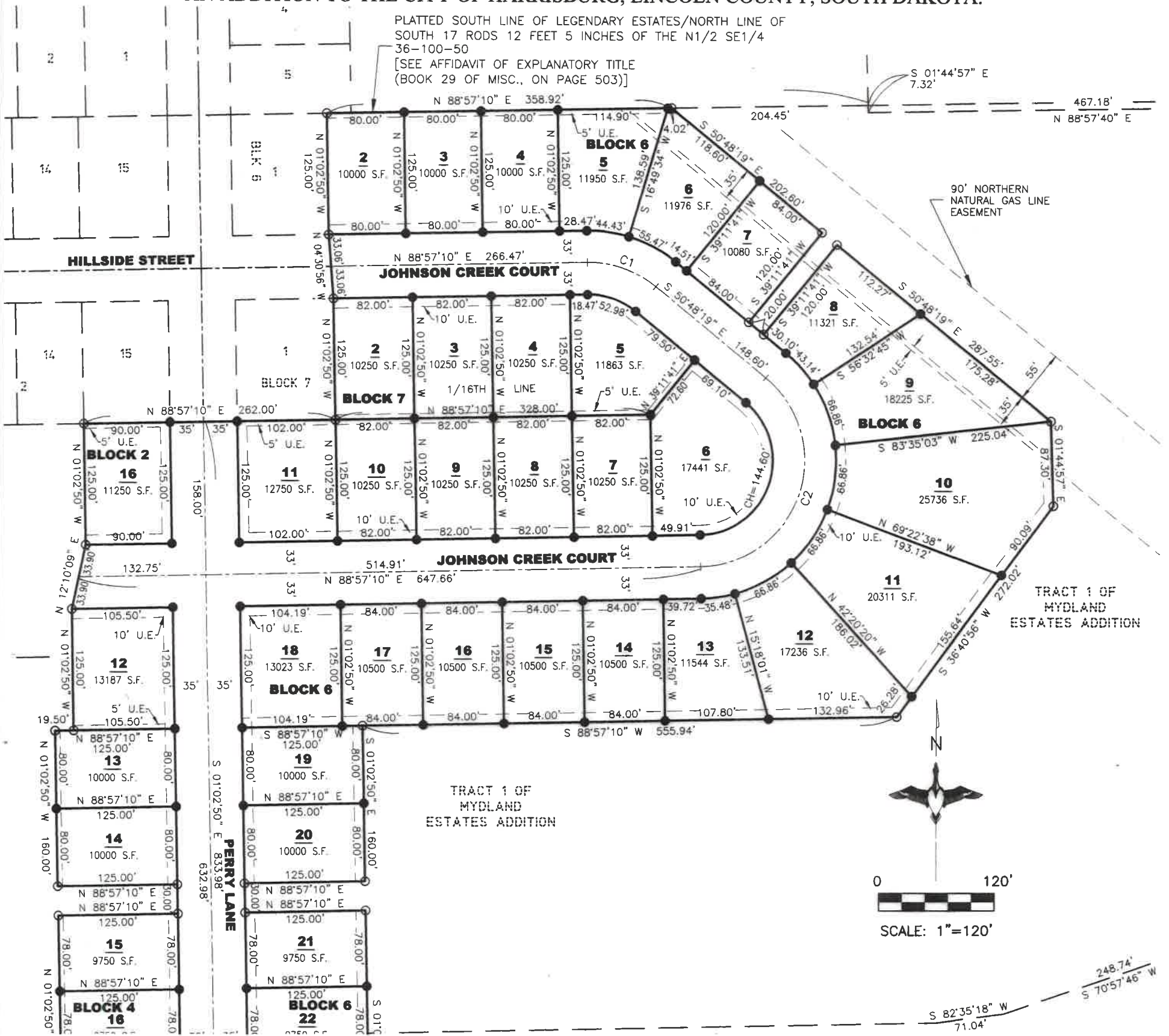


VICINITY MAP N.T.S.
CITY OF HARRISBURG

PLAT OF LOT 16 IN BLOCK 2; LOTS 24, 25, 26, 27 AND 28 IN BLOCK 3; LOTS 12, 13, 14, 15, 16, AND 17 IN BLOCK 4; LOTS 4, 5, 6, AND 7 IN BLOCK 5; LOTS 2, 3, 4, 5, 6, 7, 8, 9, 10, 11, 12, 13, 14, 15, 16, 17, 18, 19, 20, 21, 22 AND 23 IN BLOCK 6; LOTS 2, 3, 4, 5, 6, 7, 8, 9, 10 AND 11 IN BLOCK 7; ALL OF MYDLAND ESTATES ADDITION

AN ADDITION TO THE CITY OF HARRISBURG, LINCOLN COUNTY, SOUTH DAKOTA.

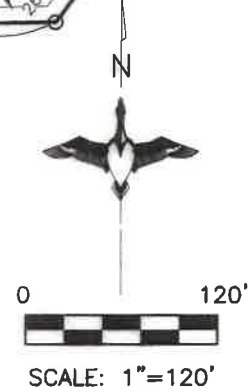
PLATTED SOUTH LINE OF LEGENDARY ESTATES/NORTH LINE OF
SOUTH 17 RODS 12 FEET 5 INCHES OF THE N1/2 SE1/4
36-100-50
[SEE AFFIDAVIT OF EXPLANATORY TITLE
(BOOK 29 OF MISC., ON PAGE 503)]



90' NORTHERN
NATURAL GAS LINE
EASEMENT

TRACT 1 OF
MYDLAND
ESTATES ADDITION

TRACT 1 OF
MYDLAND
ESTATES ADDITION



AREA TABLE	
STREETS	5.34 AC. ±
LOTS	14.03 AC. ±
TOTAL	19.37 AC. ±

CURVE	RADIUS	ARC LENGTH	CHORD LENGTH	CHORD BEARING	DELTA ANGLE
C1	110.00'	77.26'	75.68'	S 70°55'34" E	40°14'31"
C2	110.00'	268.32'	206.57'	S 19°04'26" W	139°45'29"
C3	300.00'	117.69'	116.94'	S 10°11'29" W	22°28'37"
C4	300.00'	117.81'	117.05'	S 10°10'47" W	22°30'00"
C5	210.26'	55.45'	55.29'	N 82°55'28" W	15°06'39"
C6	58.00'	91.11'	82.02'	N 46°04'11" W	90°00'00"

LEGEND:

- SET 5/8" REBAR W/CAP #6700
- FD. MONUMENT (#6700)
- () RECORD INFORMATION
- AC. ACRES
- U.E. UTILITY EASEMENT
- D.E. DRAINAGE EASEMENT
- S.F. SQUARE FEET
- R/W RIGHT-OF-WAY
- N.T.S. NOT TO SCALE
- PREVIOUSLY PLATTED LINE
- - - EASEMENT LINE

NOTES:

1. AS PER FLOOD INSURANCE RATE MAP PANEL 102 OF 550, MAP NUMBER 48083C0182C, MAP EFFECTIVE DATE: APRIL 2, 2008, PLAT IS WITHIN FLOOD ZONE X.
2. THE STREETS, AS SHOWN ON THE PLAT, ARE DEDICATED TO THE PUBLIC FOR PUBLIC USE FOREVER.
3. BASIS OF BEARINGS IS UTM-ZONE 14
4. THIS PLAT WAS PREPARED WITHOUT THE BENEFIT OF A TITLE COMMITMENT.
5. EASEMENTS OF RECORD WERE NOT RESEARCHED AND ARE NOT SHOWN ON THE PLAT.
6. DISTANCES ALONG CURVES ARE CHORD DISTANCES.
7. DRAINAGE AND PIPELINE EASEMENTS MUST BE KEPT CLEAR OF ALL OBSTRUCTIONS INCLUDING FENCES, SHEDS, AND TREES.



PREPARED BY:

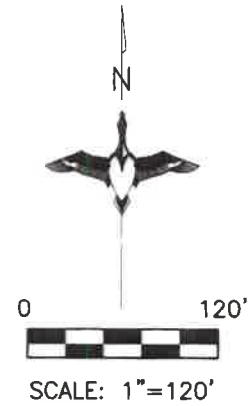
Midwest
Land Surveying, Inc.
Land Surveying and GPS Consulting
211 E. 14th Street Suite 100
Sioux Falls, South Dakota 57104
Phone: (605) 339-8901 FAX: (605) 274-8951



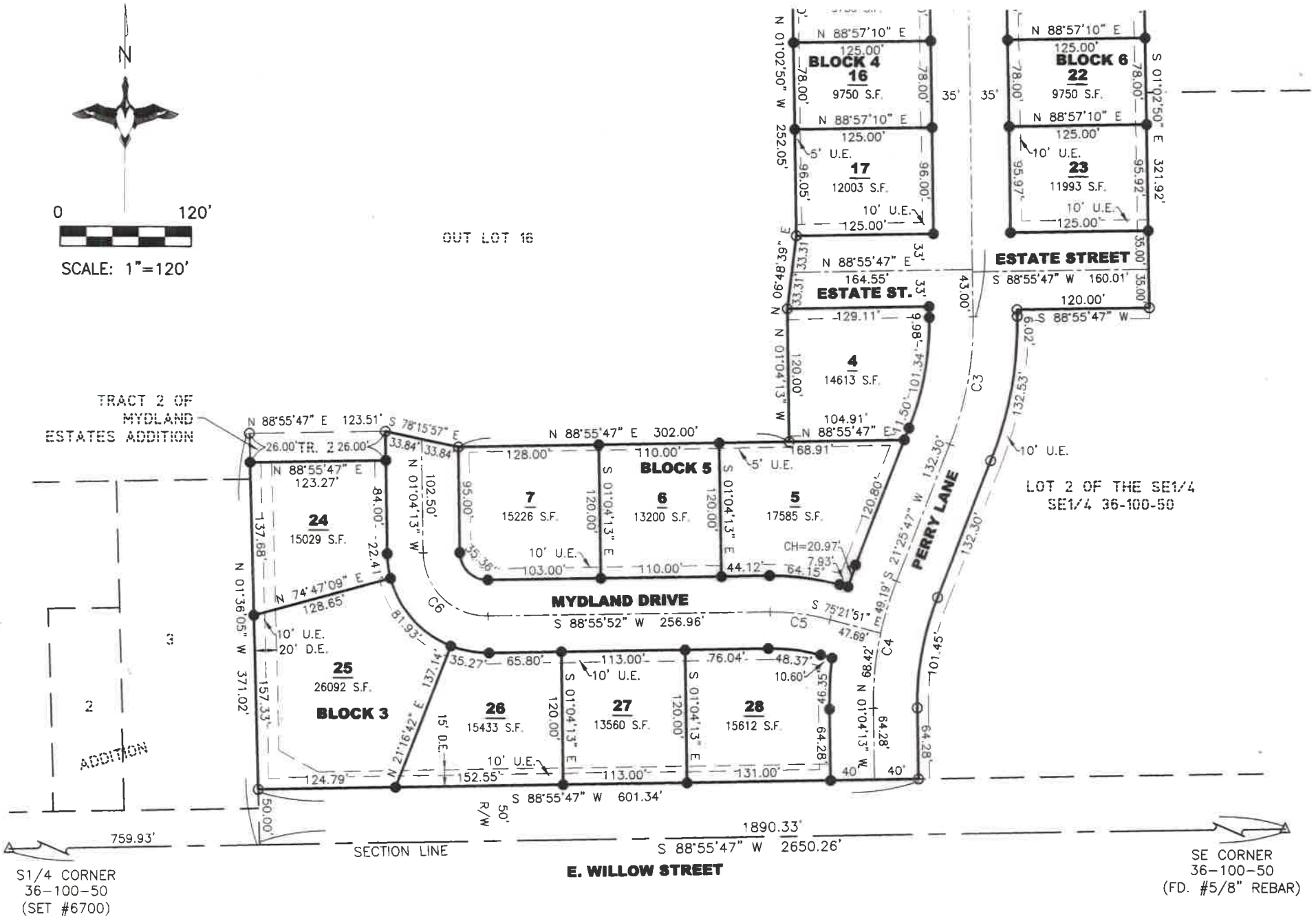
VICINITY MAP N.T.S.
CITY OF HARRISBURG

**PLAT OF LOT 16 IN BLOCK 2; LOTS 24, 25, 26, 27 AND 28 IN BLOCK 3;
 LOTS 12, 13, 14, 15, 16, AND 17 IN BLOCK 4; LOTS 4, 5, 6, AND 7 IN BLOCK
 5; LOTS 2, 3, 4, 5, 6, 7, 8, 9, 10, 11, 12, 13, 14, 15, 16, 17, 18, 19, 20, 21, 22
 AND 23 IN BLOCK 6; LOTS 2, 3, 4, 5, 6, 7, 8, 9, 10 AND 11 IN BLOCK 7;
 ALL OF MYDLAND ESTATES ADDITION**

AN ADDITION TO THE CITY OF HARRISBURG, LINCOLN COUNTY, SOUTH DAKOTA.



OUT LOT 16



AREA TABLE	
STREETS	5.34 AC.±
LOTS	14.03 AC.±
TOTAL	19.37 AC.±

CURVE	RADIUS	ARC LENGTH	CHORD LENGTH	CHORD BEARING	DELTA ANGLE
C1	110.00'	77.26'	75.68'	S 70°55'34" E	40°14'31"
C2	110.00'	268.32'	206.57'	S 19°04'26" W	139°45'29"
C3	300.00'	117.69'	116.94'	S 10°11'29" W	22°28'37"
C4	300.00'	117.81'	117.05'	S 10°10'47" W	22°30'00"
C5	210.26'	55.45'	55.29'	N 82°55'28" W	15°06'39"
C6	58.00'	91.11'	82.02'	N 46°04'11" W	90°00'00"

LEGEND:

- SET 5/8" REBAR W/CAP #6700
- FD. MONUMENT (#6700)
- () RECORD INFORMATION
- AC. ACRES
- U.E. UTILITY EASEMENT
- D.E. DRAINAGE EASEMENT
- S.F. SQUARE FEET
- R/W RIGHT-OF-WAY
- N.T.S. NOT TO SCALE
- PREVIOUSLY PLATTED LINE
- - - EASEMENT LINE

NOTES:

1. AS PER FLOOD INSURANCE RATE MAP PANEL 162 OF 550, MAP NUMBER 48083C0162C, MAP EFFECTIVE DATE: APRIL 2, 2008, PLAT IS WITHIN FLOOD ZONE X.
2. THE STREETS, AS SHOWN ON THE PLAT, ARE DEDICATED TO THE PUBLIC FOR PUBLIC USE FOREVER.
3. BASIS OF BEARINGS IS UTM-ZONE 14
4. THIS PLAT WAS PREPARED WITHOUT THE BENEFIT OF A TITLE COMMITMENT.
5. EASEMENTS OF RECORD WERE NOT RESEARCHED AND ARE NOT SHOWN ON THE PLAT.
6. DISTANCES ALONG CURVES ARE CHORD DISTANCES.
7. DRAINAGE AND PIPELINE EASEMENTS MUST BE KEPT CLEAR OF ALL OBSTRUCTIONS INCLUDING FENCES, SHEDS, AND TREES.



PREPARED BY:

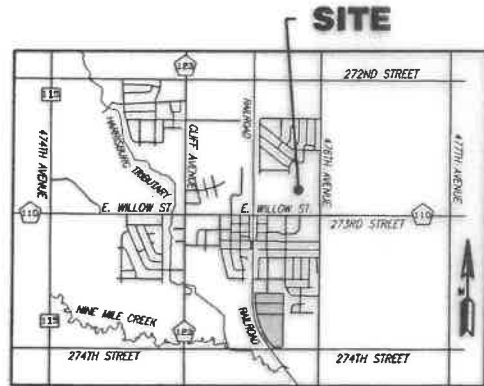
Midwest
Land Surveying, Inc.
 Land Surveying and GPS Consulting
 211 E. 14th Street Suite 100
 Sioux Falls, South Dakota 57104
 Phone: (605) 339-8901 FAX:(605) 274-8951



VICINITY MAP N.T.S.
 CITY OF HARRISBURG

PLAT OF LOTS 17, 18, 19, 20, 21, 22, 23 AND 24 IN BLOCK 2 AND LOTS 5, 6, 7, 8, 9, 10 AND 11 IN BLOCK 4 OF MYDLAND ESTATES ADDITION

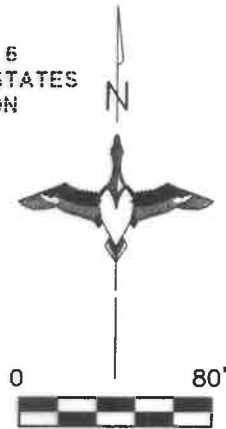
AN ADDITION TO THE CITY OF HARRISBURG, LINCOLN COUNTY, SOUTH DAKOTA.



VICINITY MAP N.T.S.
CITY OF HARRISBURG



TRACT 5
MYDLAND ESTATES
ADDITION



SCALE: 1"=80'

LEGEND:

- SET 5/8" REBAR W/CAP #8145
- FD. MONUMENT
- △ SECTION CORNER
- (M) MEASURED DISTANCE
- (R) RECORD INFORMATION
- AC. ACRES
- S.F. SQUARE FEET
- E.S.L. EACH SIDE OF PROPERTY LINE
- U.E. UTILITY EASEMENT
- S.A.E. SUMP ACCESS EASEMENT
- R/W RIGHT-OF-WAY
- N.T.S. NOT TO SCALE
- PREVIOUSLY PLATTED LINE
- - - RIGHT OF WAY LINE

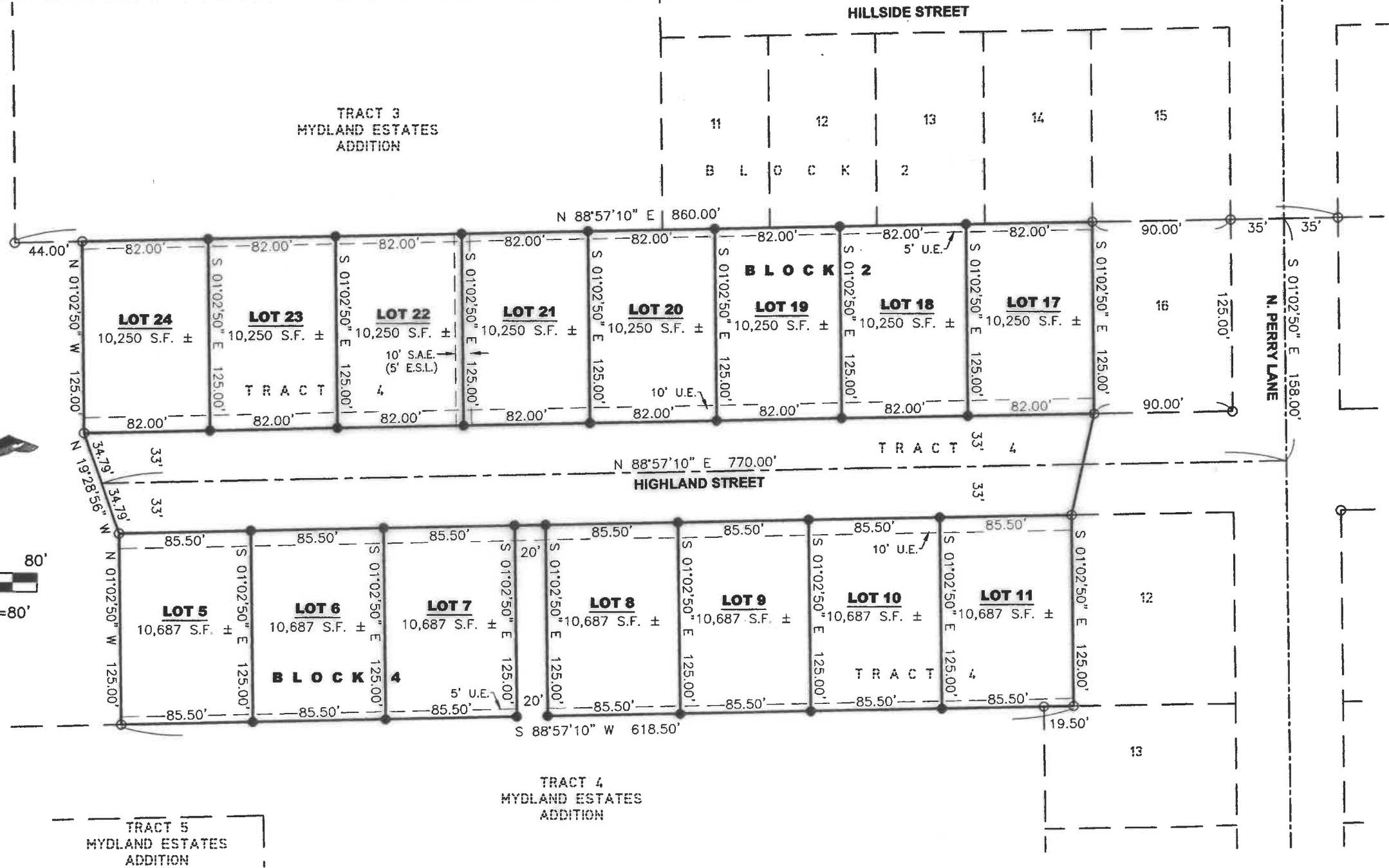
NOTES:

BASIS OF BEARINGS IS UTM-ZONE 14

THIS PLAT WAS PREPARED WITHOUT THE BENEFIT OF A TITLE COMMITMENT.

EASEMENTS OF RECORD WERE NOT RESEARCHED AND ARE NOT SHOWN ON THE PLAT.

AREA TABLE	
STREETS	0.966 AC.±
LOTS	3.657 AC.±
TOTAL	4.623 AC.±



PREPARED BY:

Midwest
Land Surveying, Inc.
Land Surveying and GPS Consulting
211 E. 14th Street Suite 100
Sioux Falls, South Dakota 57104
Phone: (605) 339-8901 FAX:(605) 274-8951

SURVEYOR'S NOTE:

LOCATION OF THE FLOOD PLAIN ZONE WAS DIGITIZED FROM FLOOD INSURANCE RATE MAP PANEL 162 OF 550, MAP NUMBER 46083C0162C, MAP EFFECTIVE DATE APRIL 2, 2008. THE ACCURACY OF SAID FLOOD ZONE IS APPROXIMATE AND NOT BASED ON ANY FLOOD ELEVATION OR A FIELD SURVEY. NO WARRANTY IS PROVIDED FOR THE EXACT LOCATION OF THE FLOOD PLAIN THAT A SUBSEQUENT FLOOD ELEVATION SURVEY MAY DISCLOSE. *SUBJECT AREA PART OF LINCOLN COUNTY UNINCORPORATED AREAS 460277.