



WEISSER BUILDING

LOCATED IN TEA, SD

FLEX/OFFICE SPACE AVAILABLE

501 East 1st Street | Tea, SD 57064



SIZE

7,000 sqft



LAYOUT

Seven offices, conference room, break room, large showroom plus in suite restrooms.



CO-TENANCY

Schoenard's Custom Cabinetry, Tea City Hall, Fareway, Dollar Fresh, Subway and the Tea Police Department.



PRICE

\$7.50/SF (NNN)



DELIVERY

Move in ready



LOCATION

High-profile location in Tea, SD on 1st Street, on the main east/west corridor through the city.

Information deemed reliable but not guaranteed.



VBCLINK.COM | 605.361.8211

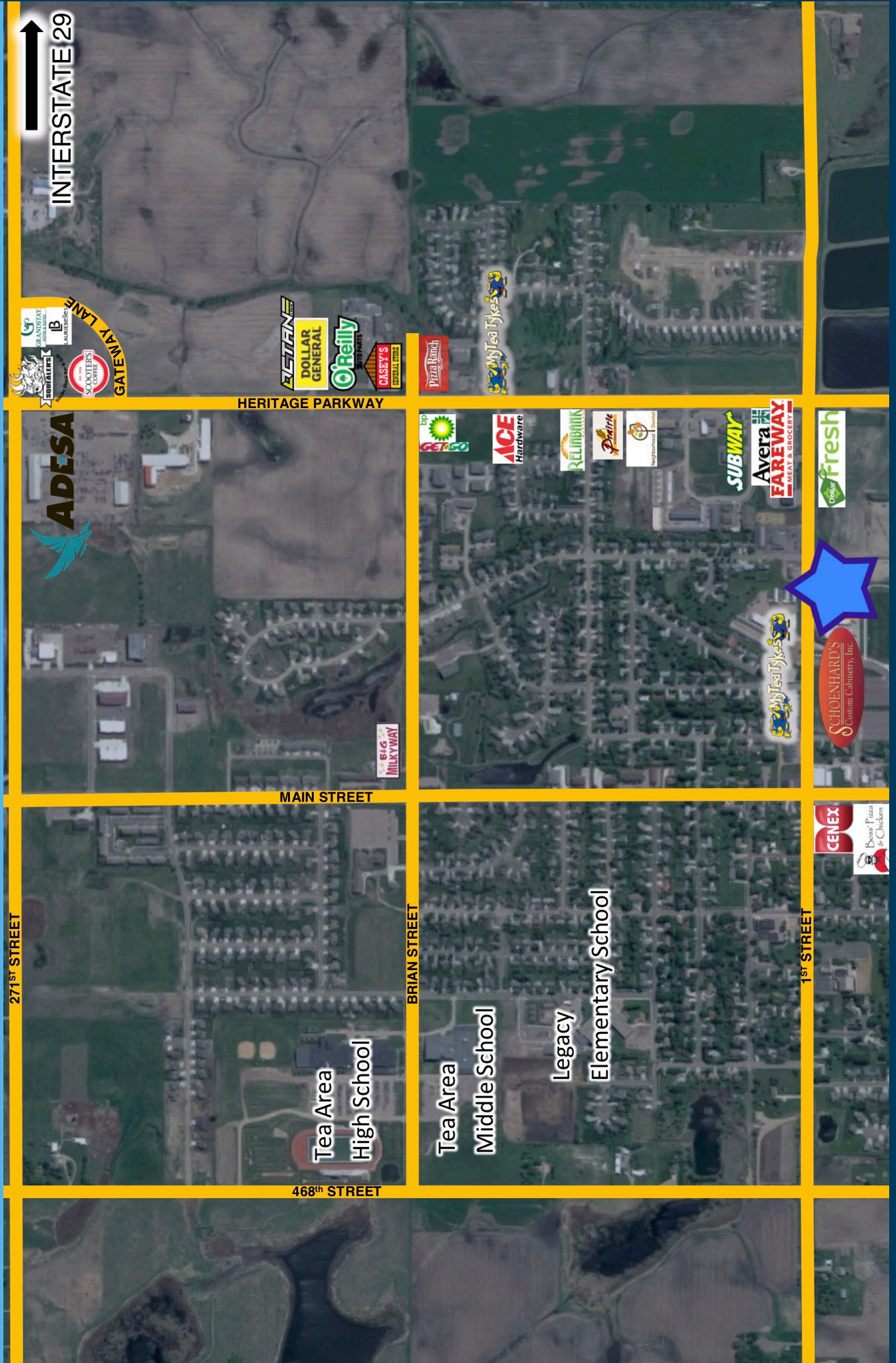
2571 South Westlake Drive #100 | Sioux Falls, South Dakota 57106



605.310.4509

Mike.Knudson@VBCLink.com

AREA RETAIL MAP



This floor plan illustrates a retail space with a central 'SHOW ROOM' and several specialized areas. The layout includes:

- Central Area:** A large 'SHOW ROOM' (18'-4" x 26'-10") with a curved display area and a 'VESTIBULE' (16'-0" x 11'-5").
- Left Wing:** Contains a 'CONFERENCE ROOM' (23'-0" x 14'-0"), 'STORAGE' (10'-3" x 10'-0"), 'FEC' (Food/Event Counter), 'COFFEE' (7'-0" x 4'-0"), 'COATS' (5'-0" x 7'-0"), 'M.T.R.' (Men's/Traffic Room), 'W.I.R.' (Women's/Infit Room), 'UTILITY' (12'-3" x 5'-0"), and 'BOOKKEEPING' (12'-0" x 4'-5").
- Right Wing:** Features 'INSIDE SALES' (19'-7" x 21'-6"), 'COPY / FAX / FILES' (7'-10" x 5'-0"), and a 'WAREHOUSE FOREMAN' (12'-0" x 10'-0").
- Other Areas:** Includes a 'SERVICE' area, an 'OFFICE' (9'-0" x 9'-0"), a 'DISPLAY' area (19'-2" x 5'-0"), and a 'UP 2D RS' (Up 2nd Floor) staircase.
- Dimensions:** The overall dimensions are 57'-3" wide by 23'-0" deep. Individual room dimensions are provided for most spaces.
- Markings:** A red outline highlights the perimeter of the main retail area. A blue shaded area is labeled 'LEASED'. A large red 'AVAILABLE' watermark is centered over the 'SHOW ROOM'.

[illegible]

PHOTOS

