



## Ranch Walkout

This gorgeous 2 bedroom, 2 bathroom home is located in the *Willow Ridge* development in eastern Sioux Falls. Close to schools, parks, golf and plenty of outdoor recreation! Includes a 3 car garage and unfinished basement .

### Property Features:

- 1,572 sq ft on main level
- Unfinished lower level includes 2 additional bedrooms, a full bath, and family room
- Walkout lower level
- Cover deck off dining
- Maple cabinets with granite kitchen countertop
- Walk-in pantry
- Walk-in closet in master bedroom
- Laundry room off the kitchen
- Electric fireplace in the living room
- Whirlpool kitchen appliances

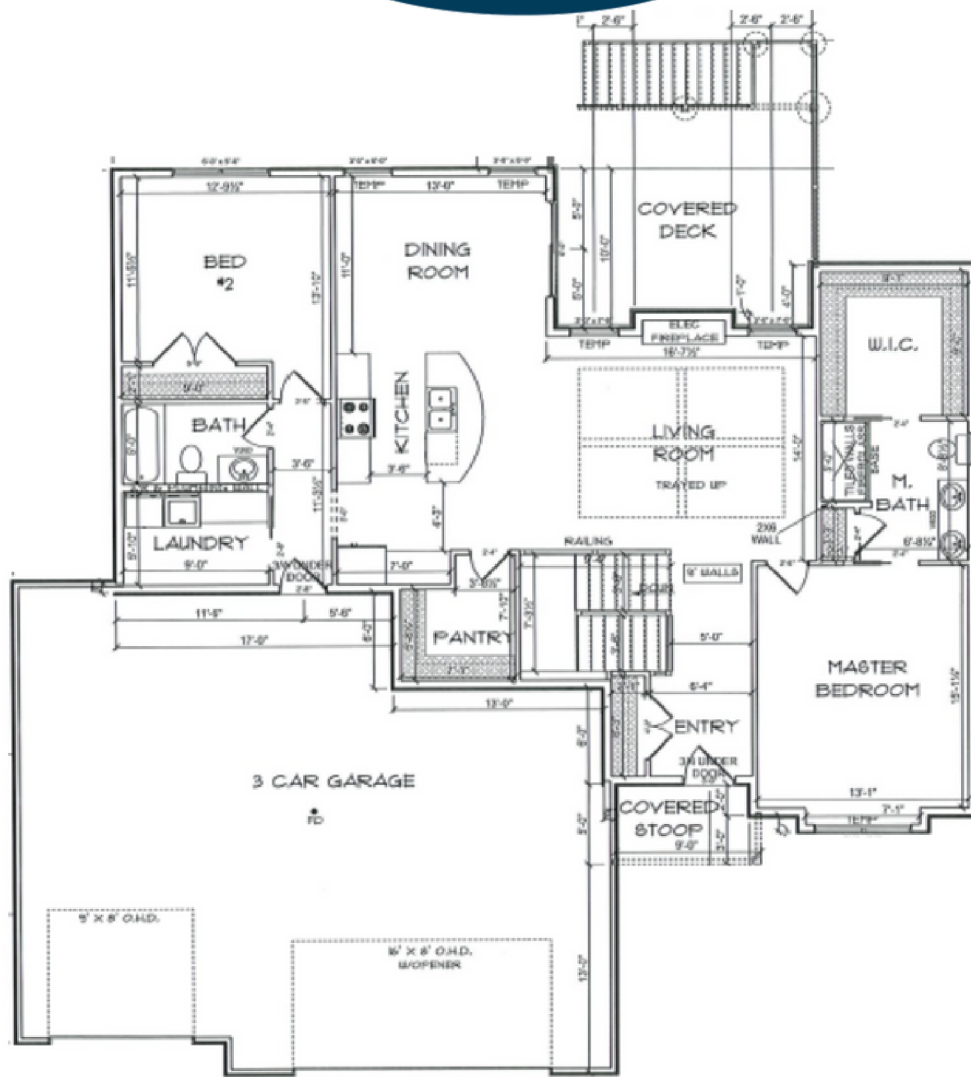


512 Willow Creek Ave.,  
Sioux Falls, SD 57110

Jordan Hefner

(605) 951-5220

VBChouses.com



## Custom Homes

Van Buskirk Construction also offers custom homes!

We can help you craft a home that fits your personality and lifestyle perfectly. Our seasoned homebuilding team will collaborate with you to ensure that your dream home is not just built, but crafted with precision, care, and unparalleled expertise.

Contact us to get started!