



WEISSER BUILDING

LOCATED IN TEA, SD

45,000 SQFT INDUSTRIAL PROPERTY

501 East 1st Street | Tea, SD 57064



SIZE

Building B: 9,920 sqft



LAYOUT

Great warehouse property with Class A office space and ample employee parking.



DETAILS

- Building A sidewalls: 20'-22'
- Building B sidewalls: 14'-24'
- 10 offices, plus 4 warehouse offices
- Building A is fully air conditioned & heated
- Building B has Reznor & radiant heat
- 70+ parking stalls
- Building A: 3 loading docks, 2 overhead doors



PRICE

\$6.75 / sqft NNN



LOCATION

High-profile location in Tea, SD on 1st Street, on the main east/west corridor through the city.

Information deemed reliable but not guaranteed.



VBCLINK.COM | 605.361.8211

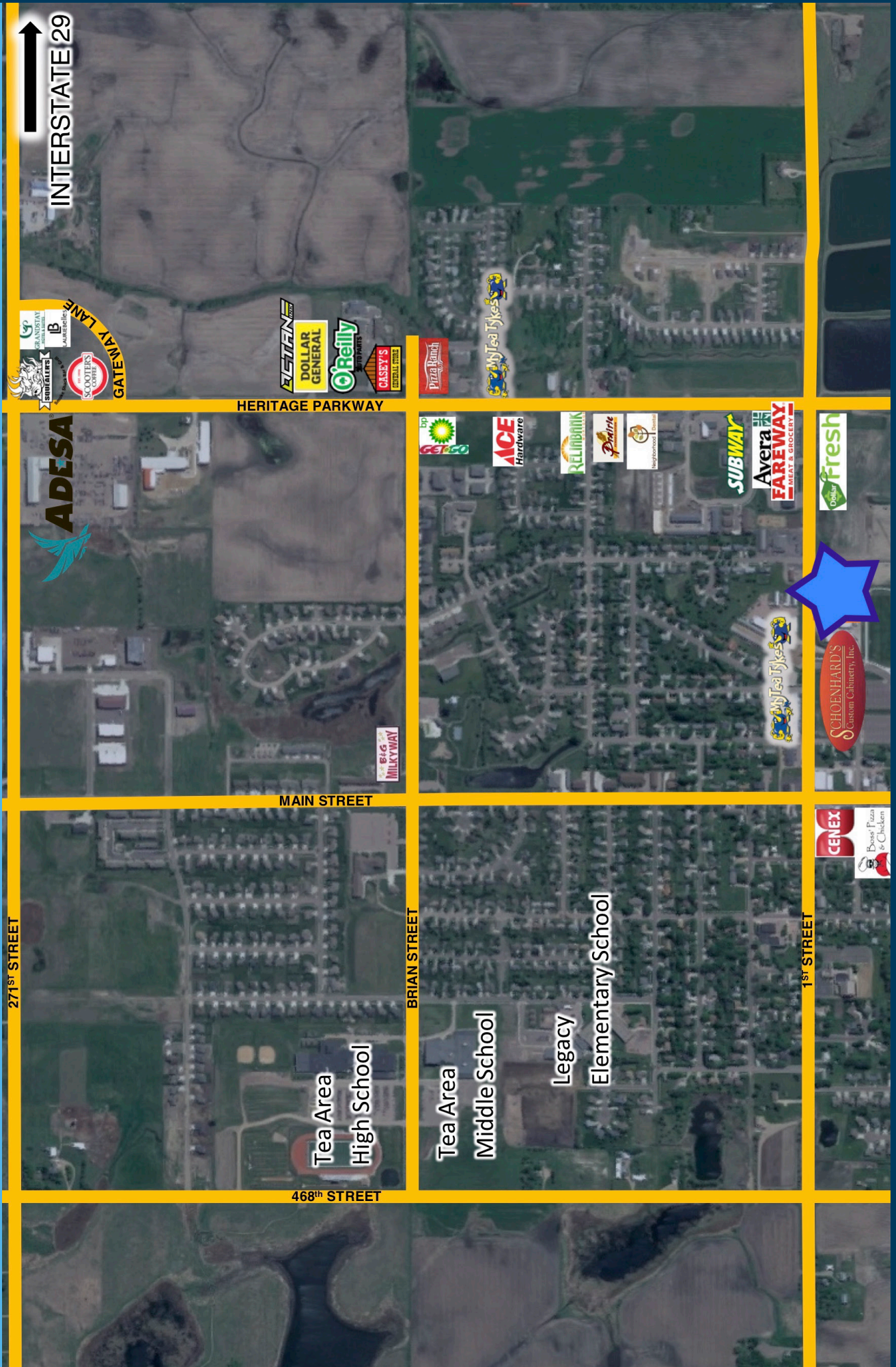
2571 South Westlake Drive #100 | Sioux Falls, South Dakota 57106



605.310.4509

Mike.Knudson@VBCLink.com

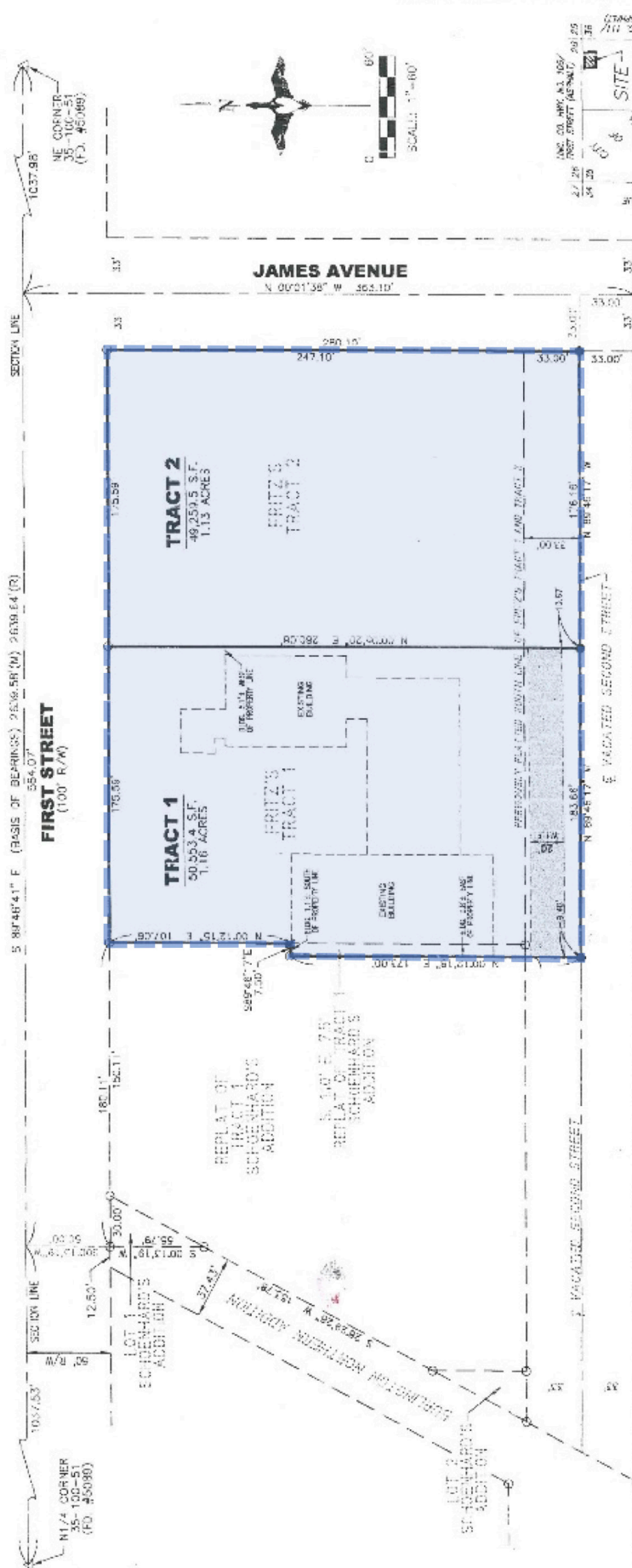
AREA RETAIL MAP



PLAT

PLAT OF DAKOTA MILLWORK ADDITION

TO THE CITY OF TEA, LINCOLN COUNTY, SOUTH DAKOTA



- LEGEND:**
- 5/8" IRON NAIL N/CAP #8145
 - FD MONUMENT
 - ✕ FD CHISELLED "X"
 - (R) RECORD INFORMATION
 - AC ACRES
 - S.F. SQUARE FEET
 - R.L.C. RAILER LINE EASEMENT
 - U.E. UTILITY EASEMENT
 - D.E. DRAINAGE EASEMENT
 - R/W RIGHT-OF-WAY
 - R.L.C. RECORDS OF LINCOLN COUNTY
 - N.T.S. NOT TO SCALE
 - PREVIOUSLY PLATED LINT
 - EASEMENT LINE



NOTES:
THIS PLAT WAS PREPARED WITHOUT
THE BENEFIT OF A TITLE COMMITMENT.
BASIS OF BEARINGS ARE BASED ON THE
PLAT OF FRITZ'S TRACT 1 AND TRACT 2

N E 1 / 4 3 5 - 1 0 0 - 5 1

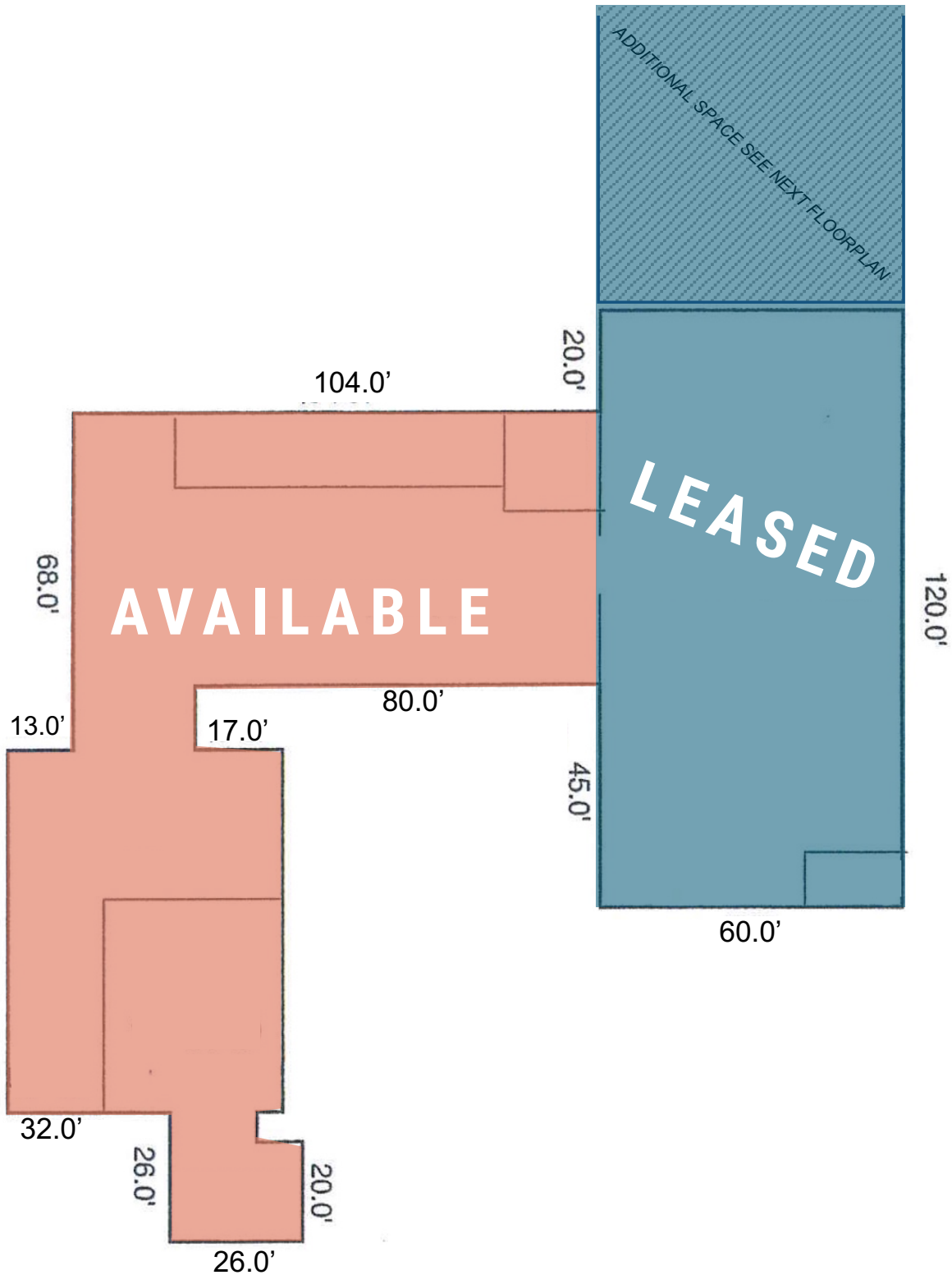
Prepared By:
MIDWEST LAND SURVEYING, INC.
Land Surveying and GPS Consulting
309 W. 48th Street, Suite 101, Steele, ND 58105
Phone: (605) 338-8501 FAX: (605) 274-8951

AREA MAP
N.T.S.
SECTION 35, T100N, R25W
5TH P.M.

DRONE IMAGES



FLOOR PLAN BUILDING B



PHOTOS

