



# WEISSER BUILDING

LOCATED IN TEA, SD

## FLEX/OFFICE SPACE AVAILABLE

501 East 1st Street | Tea, SD 57064



### SIZE

7,000 sqft



### LAYOUT

Seven offices, conference room, break room, large showroom plus in suite restrooms.



### CO-TENANCY

Schoenard's Custom Cabinetry, Tea City Hall, Fareway, Dollar Fresh, Subway and the Tea Police Department.



### PRICE

\$6 PSF (NNN)



### DELIVERY

Move in ready



### LOCATION

High-profile location in Tea, SD on 1st Street, on the main east/west corridor through the city.

Information deemed reliable but not guaranteed.



**VBCLINK.COM | 605.361.8211**

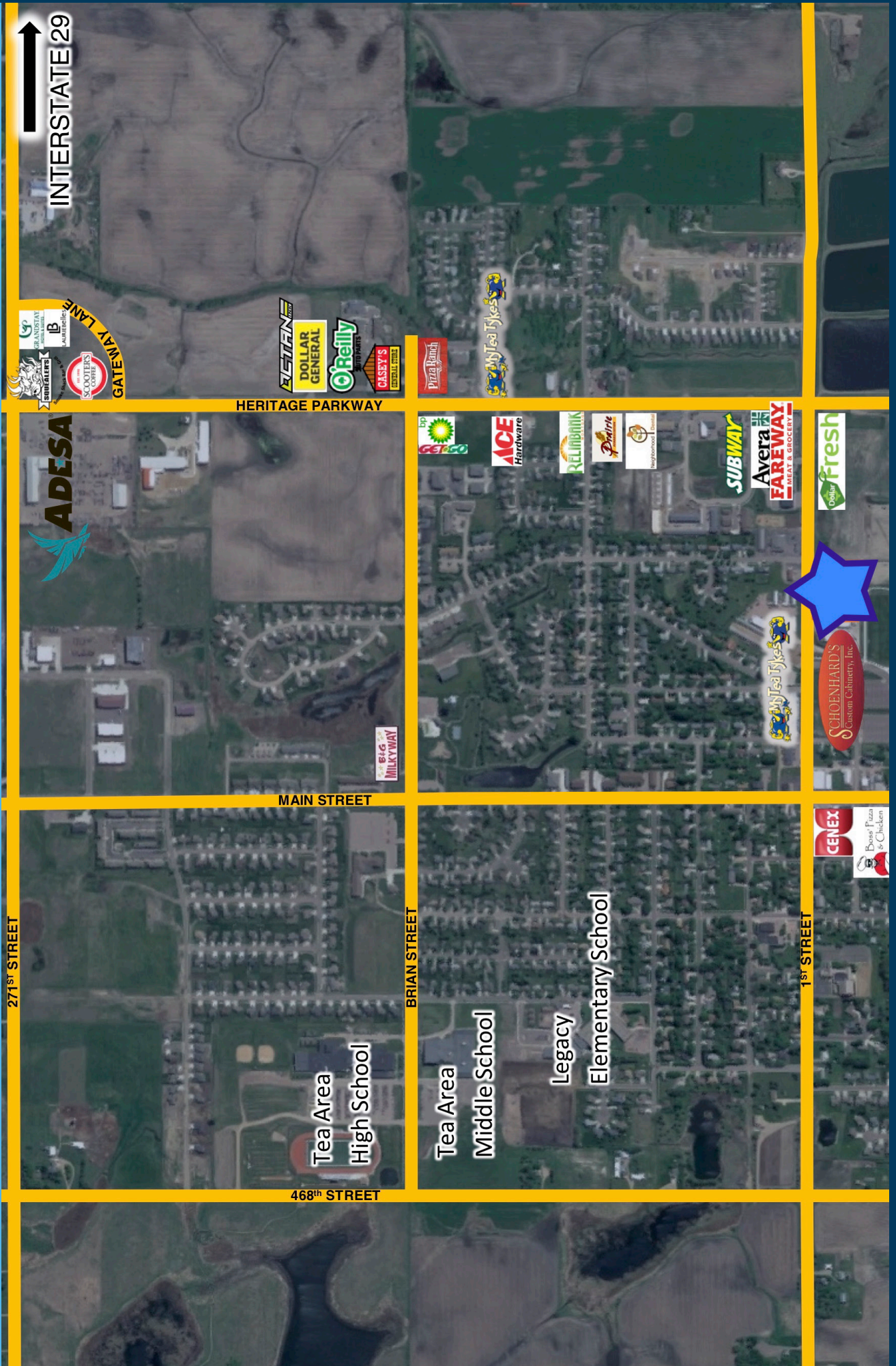
2571 South Westlake Drive #100 | Sioux Falls, South Dakota 57106



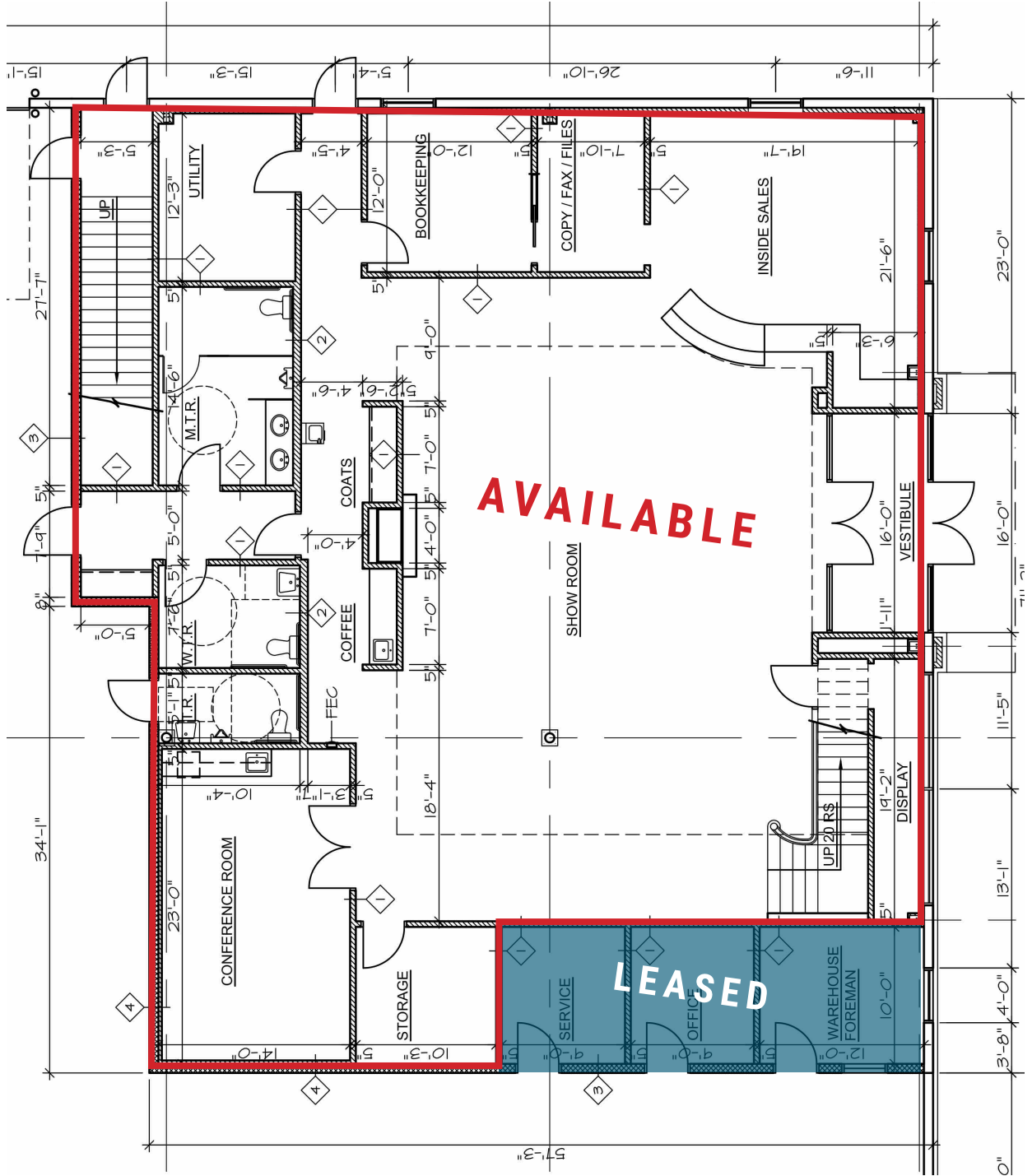
**605.310.4509**

Mike.Knudson@VBCLink.com

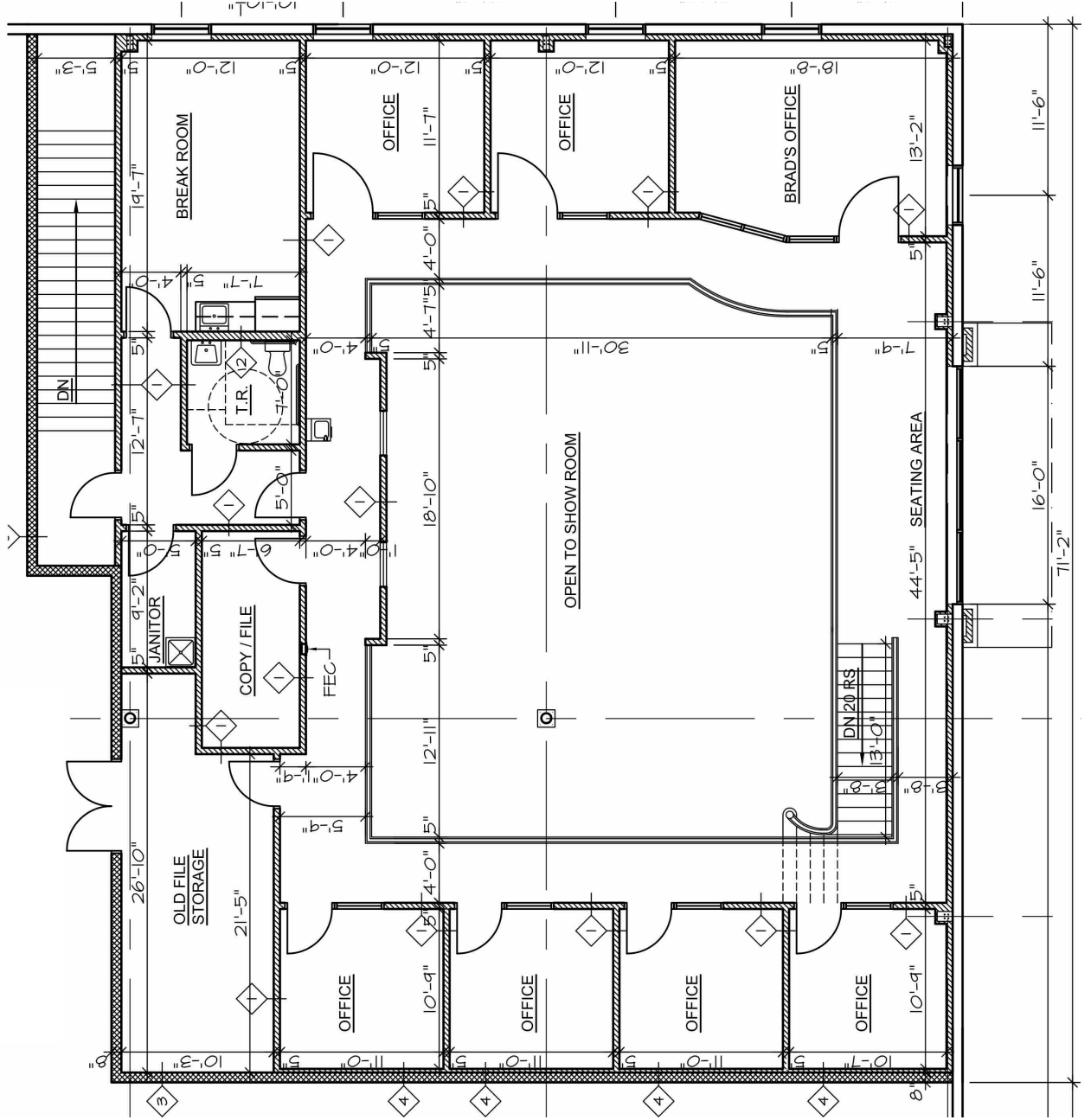
# AREA RETAIL MAP



# MAIN FLOOR PLAN



# 2ND FLOOR PLAN



# PHOTOS

