



WEXFORD INDUSTRIAL PARK

Industrial Sites For Sale | Interstate 229 Frontage



2700 North Bahnsen Avenue
Sioux Falls, SD 57104



size

1.54 - 8.82 acres
Several parcels available.
See attached site layout.



price

\$4.50 - \$5.00 per sqft
See attached pricing.



details

- Zoned I-2 Heavy Industrial
- Access from Bahnsen Avenue.
- Shovel-ready sites will be delivered level-graded, utilities stubbed to the property, street improvements complete.
- Platting fees paid by Seller.
- Served by Regional BMP.



delivery

Industrial pads will be delivered shovel-ready in 2024.



location

Wexford Industrial Park boasts high-profile visibility along Interstate 229, with close proximity to Interstate 90.

Information deemed reliable but not guaranteed.



2571 South Westlake Drive #100
Sioux Falls, South Dakota 57106
VBClink.com | 605.361.8211

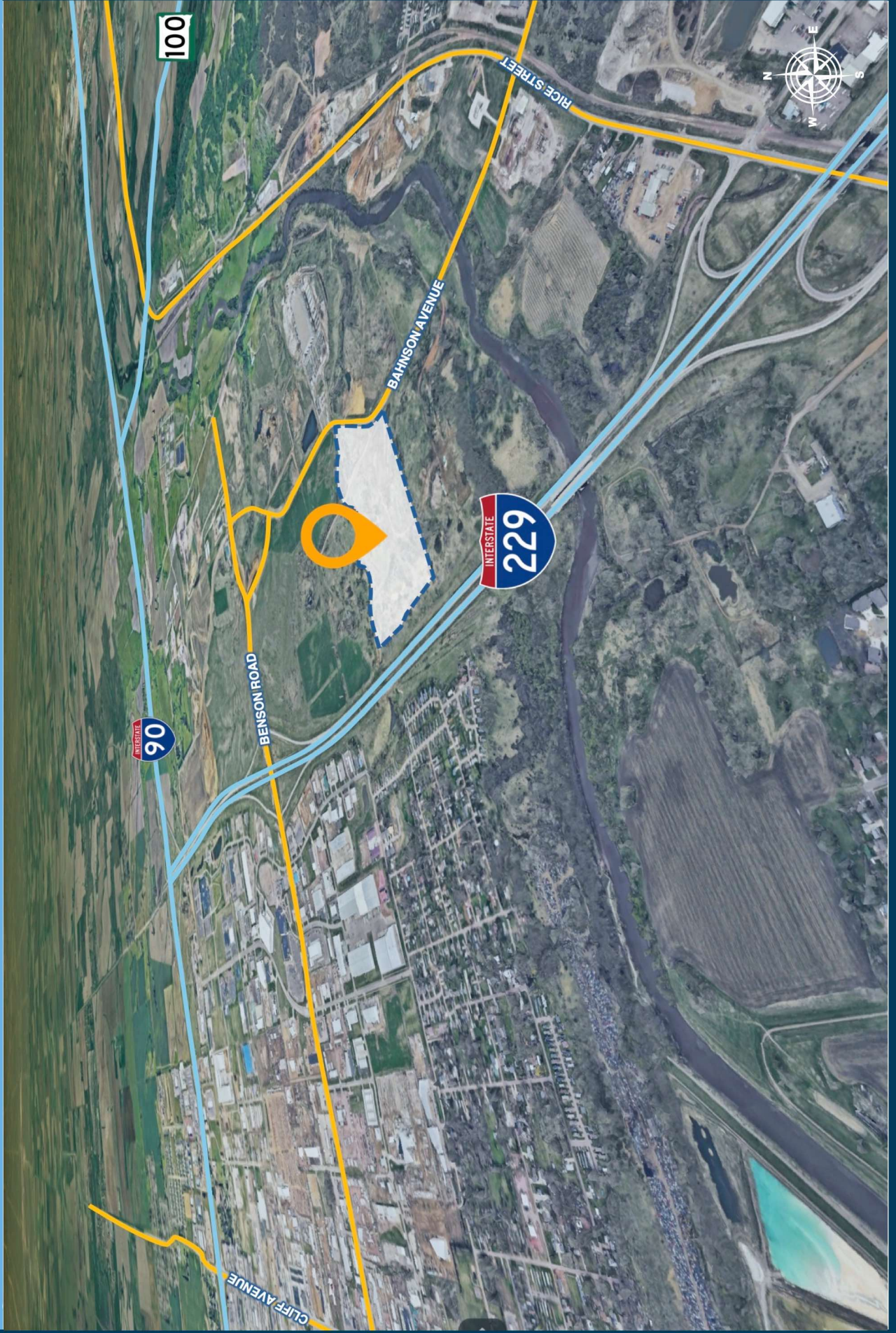


605.376.0127
Ryan@VBClink.com

AREA MAP



SITE OVERVIEW



SITEPLAN | PRICING



PROJECT NO.	19460
SUBMITTED BY	KJR
APPROVED BY	KJR
DATE	1/24/24

SWEETMAN PARTNERS, LLP

WEXFORD ADDITION - PHASE 3 DEP
I-229 & BANHSON ROAD
SIOUX FALLS, MINNEHAHA COUNTY, SOUTH DAKOTA

Sayre Associates
216 S. Duluth Avenue • Sioux Falls, SD 57104
Phone: (605) 332-7211

Engineering Solutions