

**3 MONTHS  
FREE**  
WITH 30-MONTH LEASE

EST. 1889

**• PARKER •**

**B L O C K**

## Single Office Suites For Lease



315 North Main Avenue | Downtown Sioux Falls

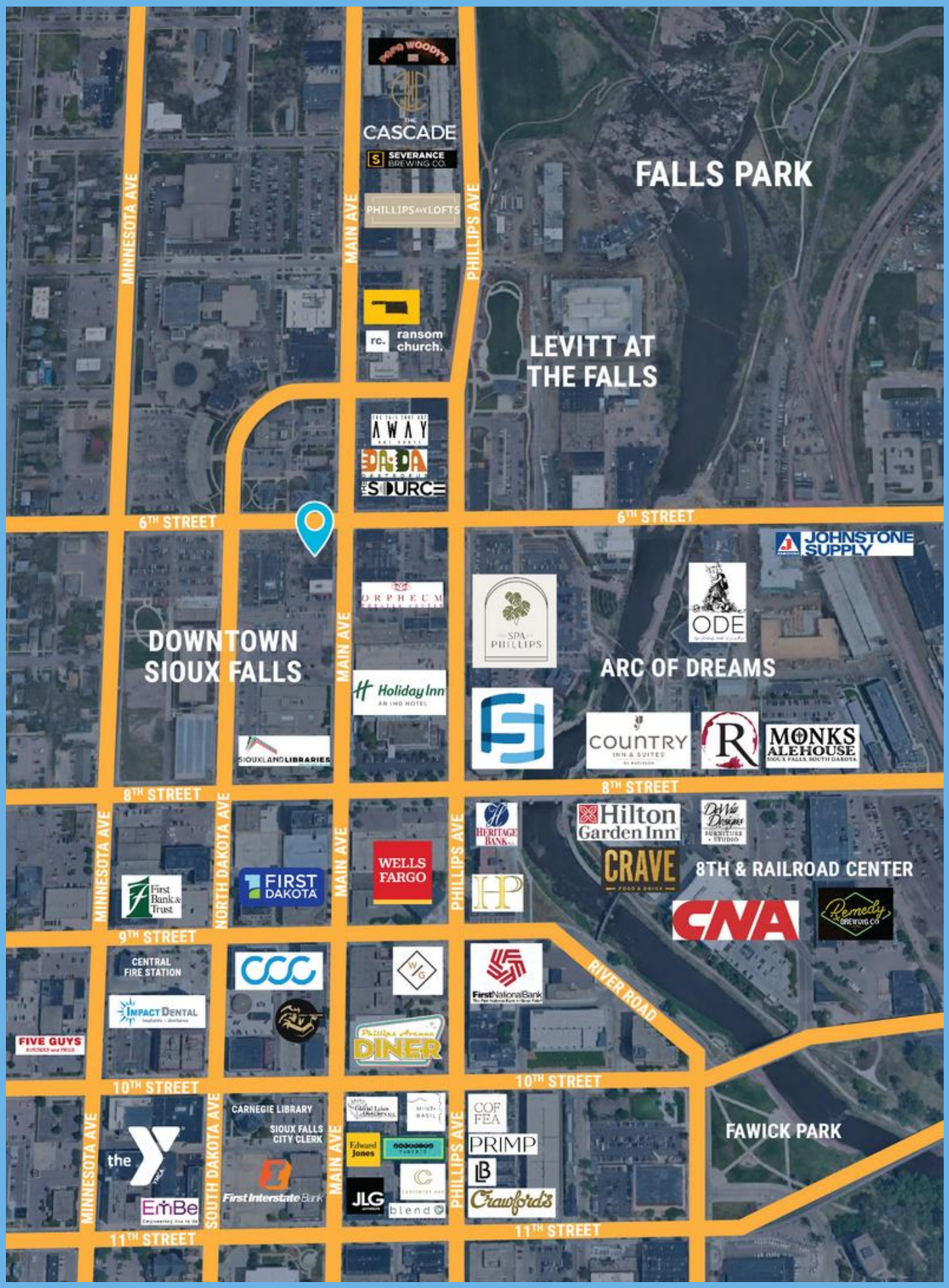


Lake Lorraine | 2571 S. Westlake Drive #100  
Sioux Falls, South Dakota 57106  
VBClick.com | 605.361.8211



**605.376.0127**  
Ryan@VBClick.com





# FALLS PARK

# LEVITT AT THE FALLS

# DOWNTOWN SIOUX FALLS

# ARC OF DREAMS

# 8TH & RAILROAD CENTER

# FAWICK PARK

MINNESOTA AVE

MAIN AVE

PHILLIPS AVE

6TH STREET

6TH STREET

8TH STREET

8TH STREET

9TH STREET

10TH STREET

11TH STREET

NORTH DAKOTA AVE

MAIN AVE

PHILLIPS AVE

MAIN AVE

PHILLIPS AVE

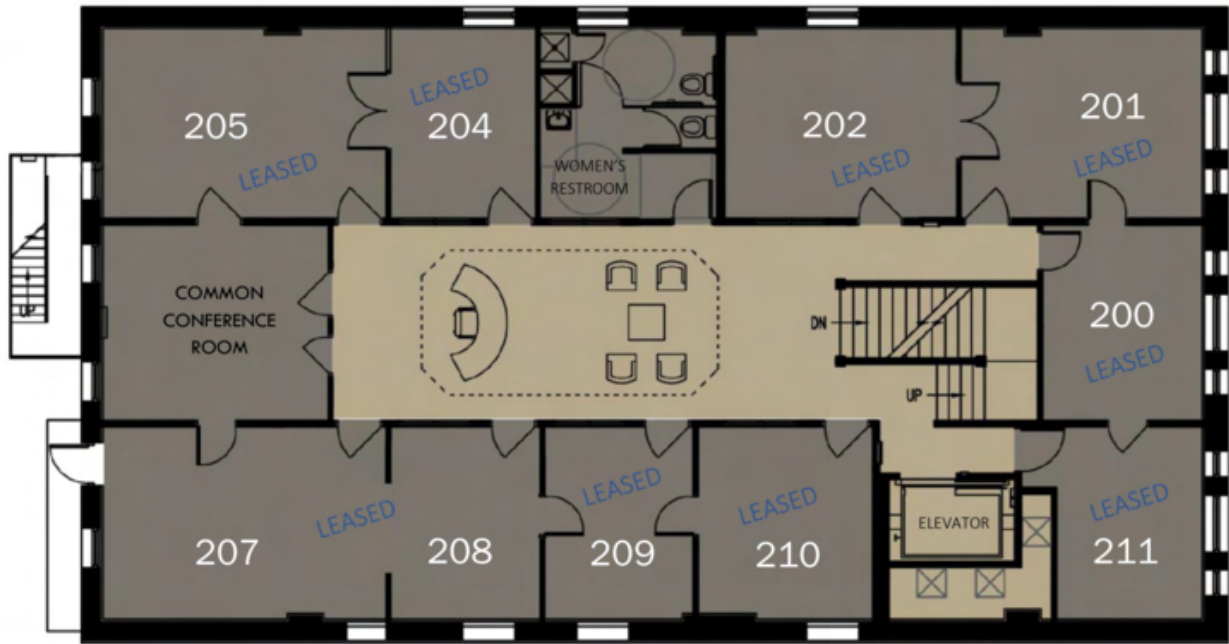
RIVER ROAD



EST. 1889

# • PARKER •

## B L O C K



2<sup>nd</sup> FLOOR PLAN



3<sup>rd</sup> FLOOR PLAN

Suite 300  
\$750/mo



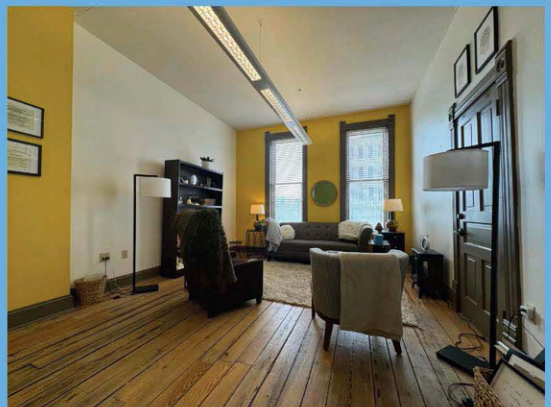
Suite 306  
\$400/mo



LEASED



Suite 307  
\$750/mo



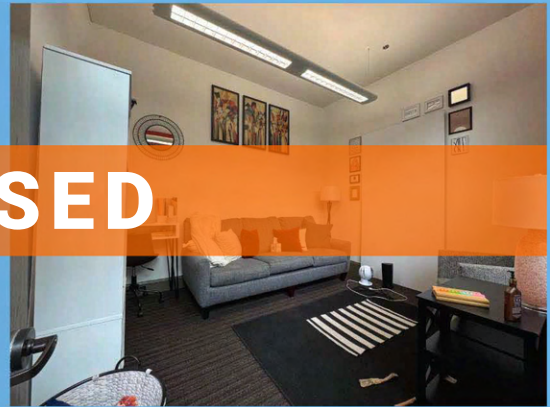
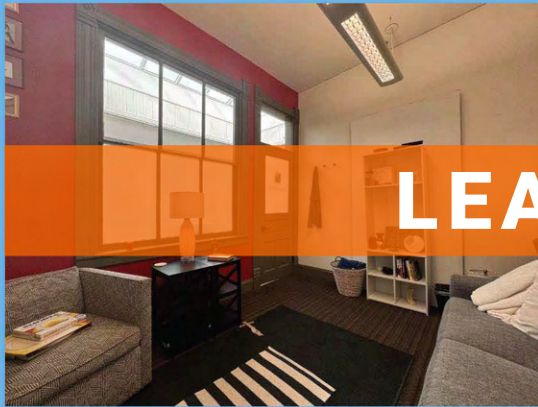
EST. 1889

• PARKER •

B L O C K



Suite 308  
\$450/mo

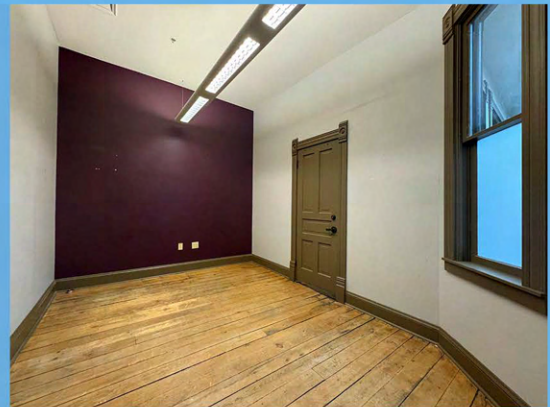
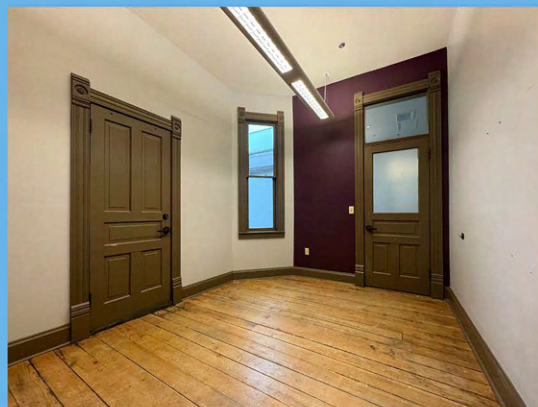


LEASED

Suite 309  
\$450/mo



Suite 310  
\$450/mo

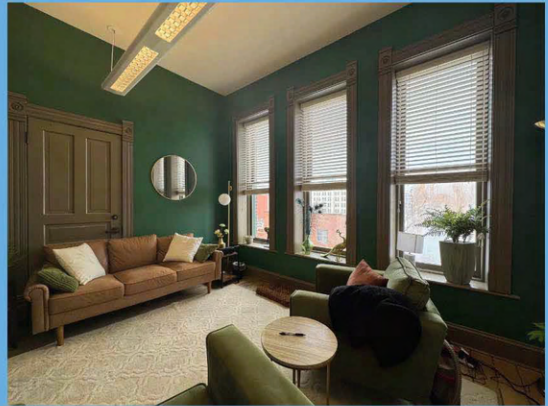
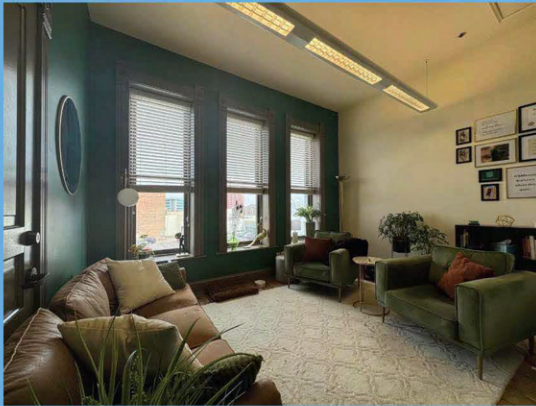


EST. 1889

• PARKER •

B L O C K

Suite 312  
\$675/mo



Suite 207/208  
\$1,100/mo



**LEASED**



Single Office Suites

EST. 1889

• PARKER •

B L O C K



