

**3 MONTHS
FREE**
WITH 30-MONTH LEASE

EST. 1889

• PARKER •

B L O C K

Single Office Suites For Lease



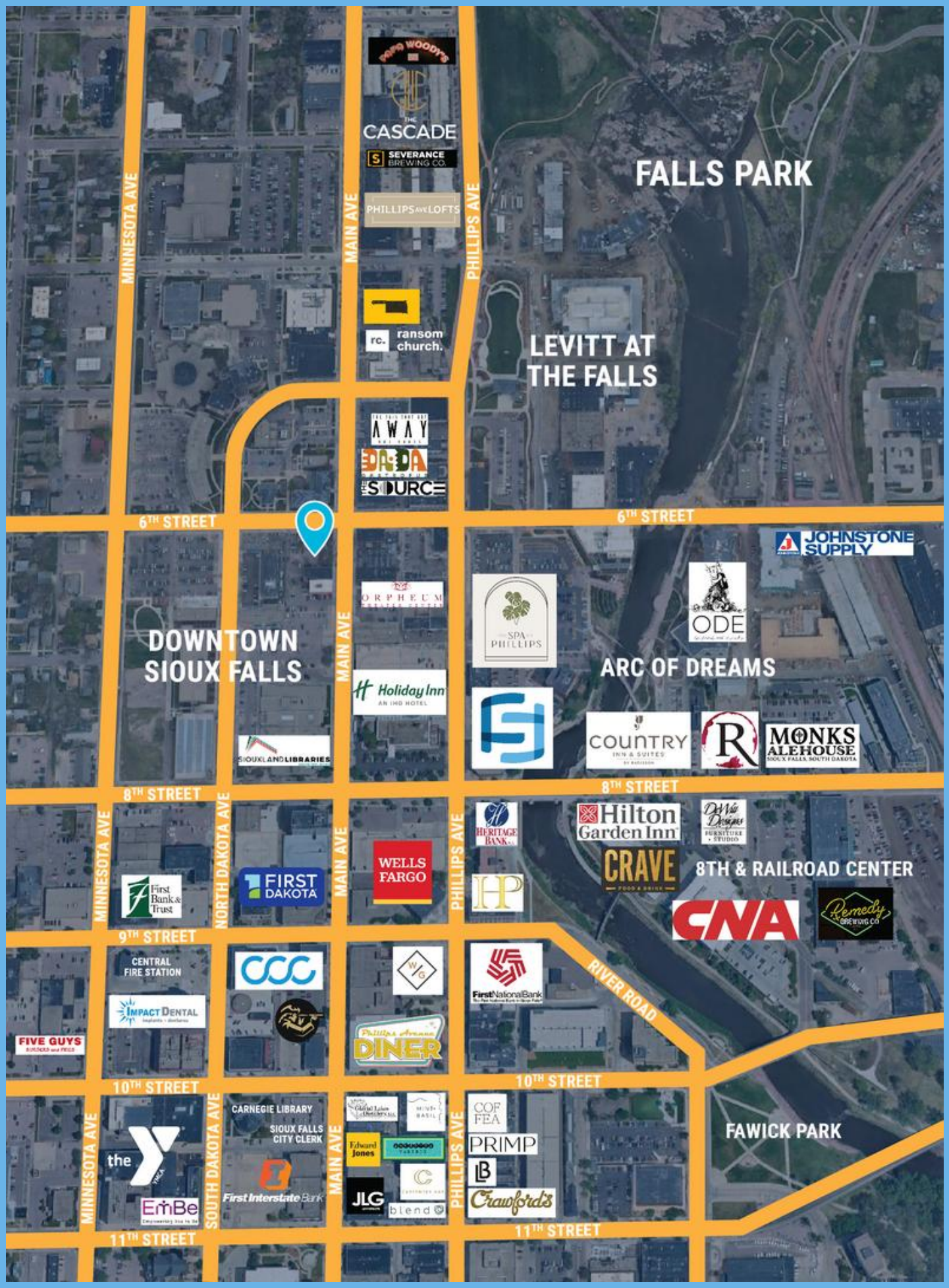
315 North Main Avenue | Downtown Sioux Falls



Lake Lorraine | 2571 S. Westlake Drive #100
Sioux Falls, South Dakota 57106
VBClick.com | 605.361.8211



605.376.0127
Ryan@VBClick.com



FALLS PARK

LEVITT AT THE FALLS

DOWNTOWN SIOUX FALLS

ARC OF DREAMS

8TH & RAILROAD CENTER

FAWICK PARK

MINNESOTA AVE

MAIN AVE

PHILLIPS AVE

MAIN AVE

MINNESOTA AVE

NORTH DAKOTA AVE

MAIN AVE

PHILLIPS AVE

MINNESOTA AVE

SOUTH DAKOTA AVE

MAIN AVE

PHILLIPS AVE

6TH STREET

6TH STREET

8TH STREET

8TH STREET

9TH STREET

10TH STREET

10TH STREET

11TH STREET

11TH STREET

RIVER ROAD



EST. 1889

• PARKER •

B L O C K



2nd FLOOR PLAN



3rd FLOOR PLAN

Suite 300
\$750/mo



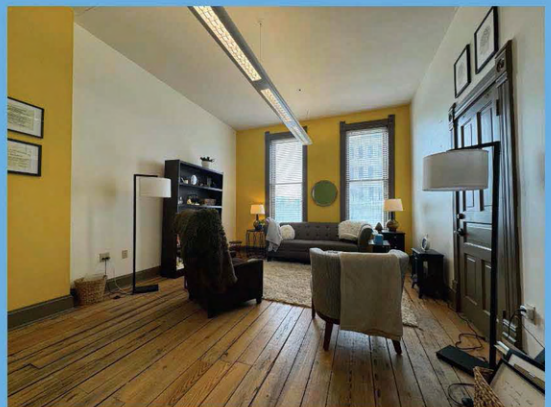
Suite 306
\$400/mo



LEASED



Suite 307
\$750/mo

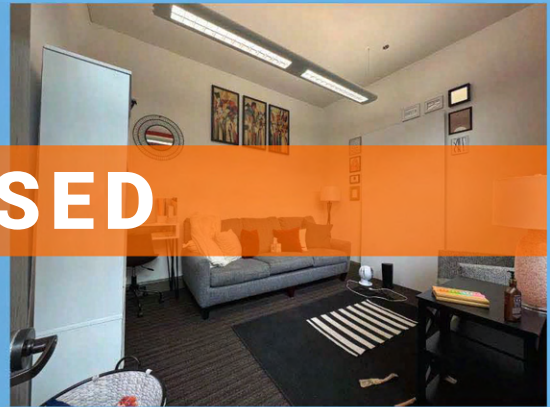


EST. 1889

• PARKER •

B L O C K

Suite 308
\$450/mo



LEASED

Suite 309
\$450/mo



Suite 310
\$450/mo



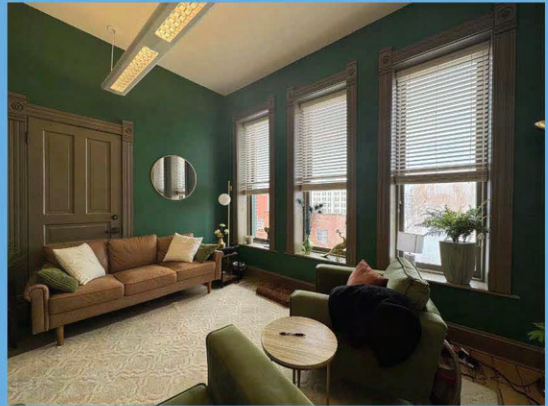
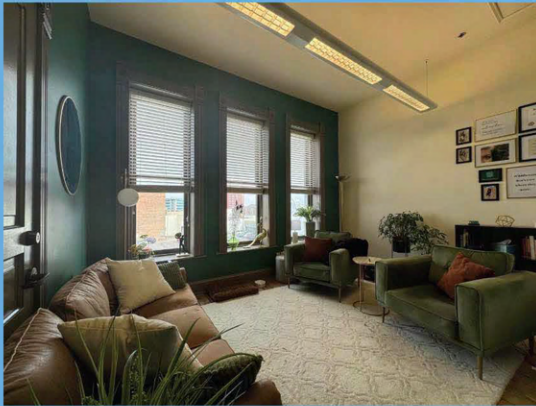
LEASED

EST. 1889

• PARKER •

B L O C K

Suite 312
\$675/mo



Suite 207/208
\$1,100/mo



LEASED



Single Office Suites

EST. 1889

• PARKER •

B L O C K

