

**FOR
SALE**

DAUBYS SPORTS CENTER BUILDING

STAND-ALONE BUILDING ON 41ST STREET



2720 W 41ST STREET
SIOUX FALLS, SD 57105



SIZE

Building Size:
4,350 sq. ft.

Parcel Size:
14,800 sq. ft.



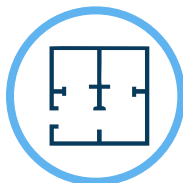
PRICE

\$1,400,000



LOCATION

Located on 41st Street
between Kiwanis Avenue
and Western Avenue



LAYOUT

Wide open showroom
with two offices,
restrooms and a large
backroom



TRAFFIC

28,700 vehicles per
day on 41st Street



COTENANCY

Verizon, Subway, The
Original Pancake House,
Pizza Ranch, Perkins, UPS
Store, T-Mobile, Advance
Auto Parts, Burger King,
Best Buy, Scheels and the
Western Mall

Information deemed reliable, but not guaranteed.

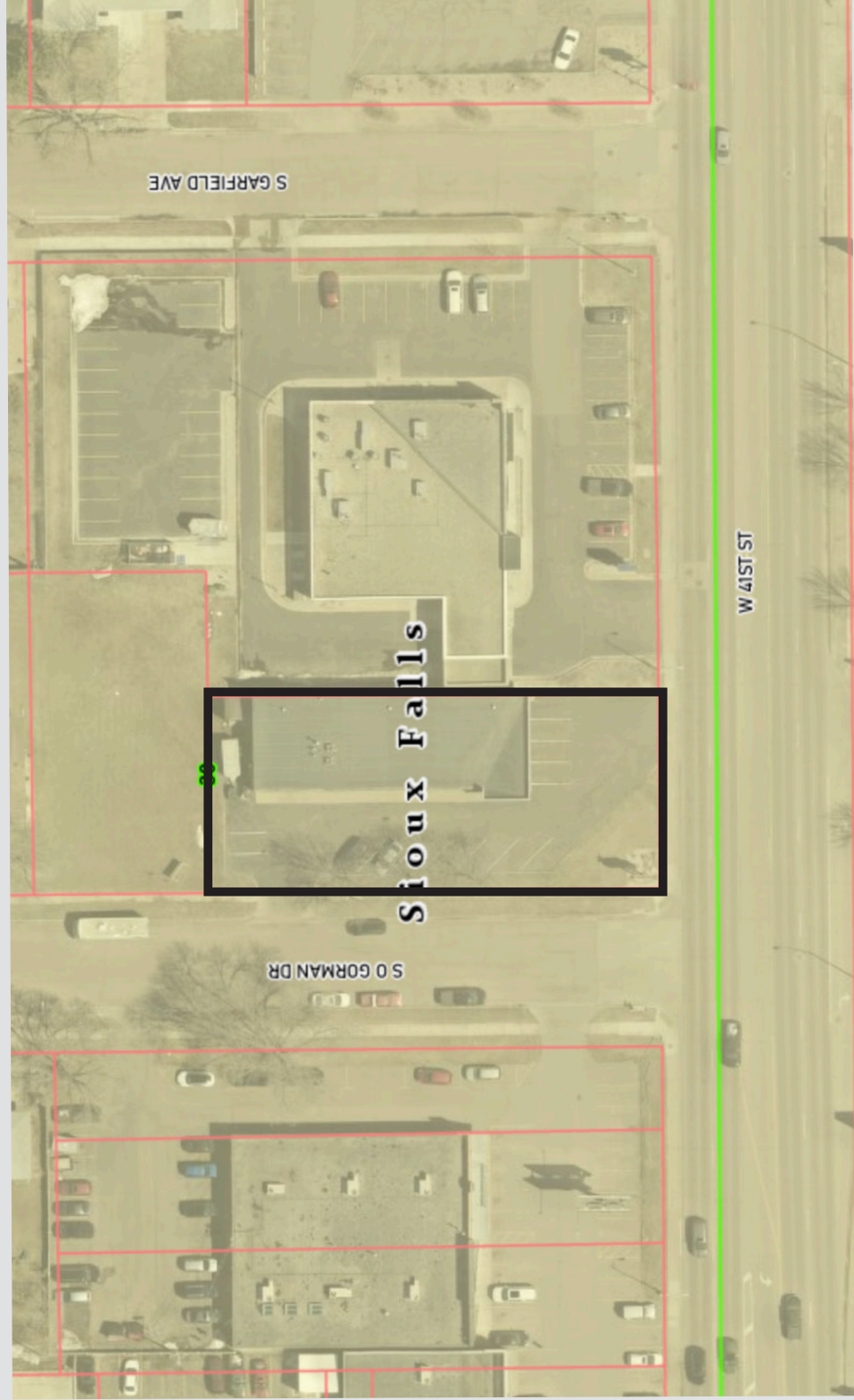


2571 S Westlake Drive #100
Sioux Falls, SD 57106
605.361.8211 | VBCcommercial.com

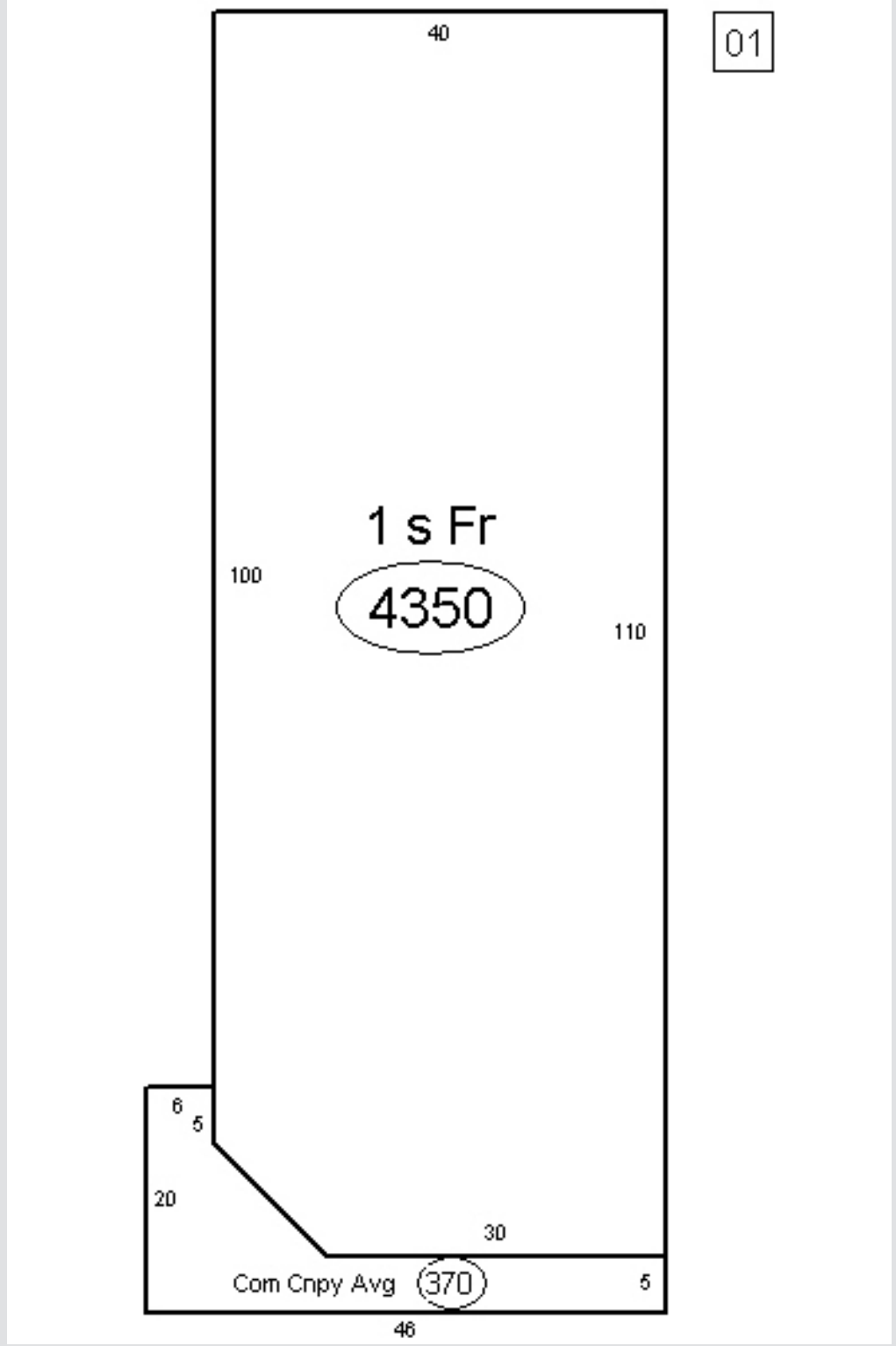


605.310.4509
mike.knudson@vbclink.com

PARCEL MAP



FLOOR PLAN



PHOTOS: INTERIOR



PHOTOS: INTERIOR



PHOTOS: INTERIOR

