



FOSSFIELDS

VETERANS PARKWAY + MADISON STREET (SW CORNER)

5901 East Madison Street | Sioux Falls, SD 57110



SIZE

See attached



PRICE

See attached



LOCATION

High-profile location on the southwest corner of Veterans Parkway & Madison Street, directly south of Sanford / Lewis.



ZONING

Multiple C-2 Commercial and Live-Work parcels, ideal for retail, medical, office and senior housing uses. Contact broker regarding sub-dividing.



CO-TENANCY

Sanford Health, Lewis, Casey's, KwikStar, Truks & Trykes, Menards, Walmart, Target, Canterbury Village, Brandon Valley Elementary School (proposed), SF Fire & Rescue (proposed).



HIGHWAY 100

Foss Fields is located on Veterans Parkway (SD Highway 100), a 4-lane thoroughfare connecting Sioux Falls to Interstate 90. Veterans Parkway is projected to carry over 55,000 cars per day!

Information deemed reliable but not guaranteed.



VBCLINK.COM | 605.361.8211

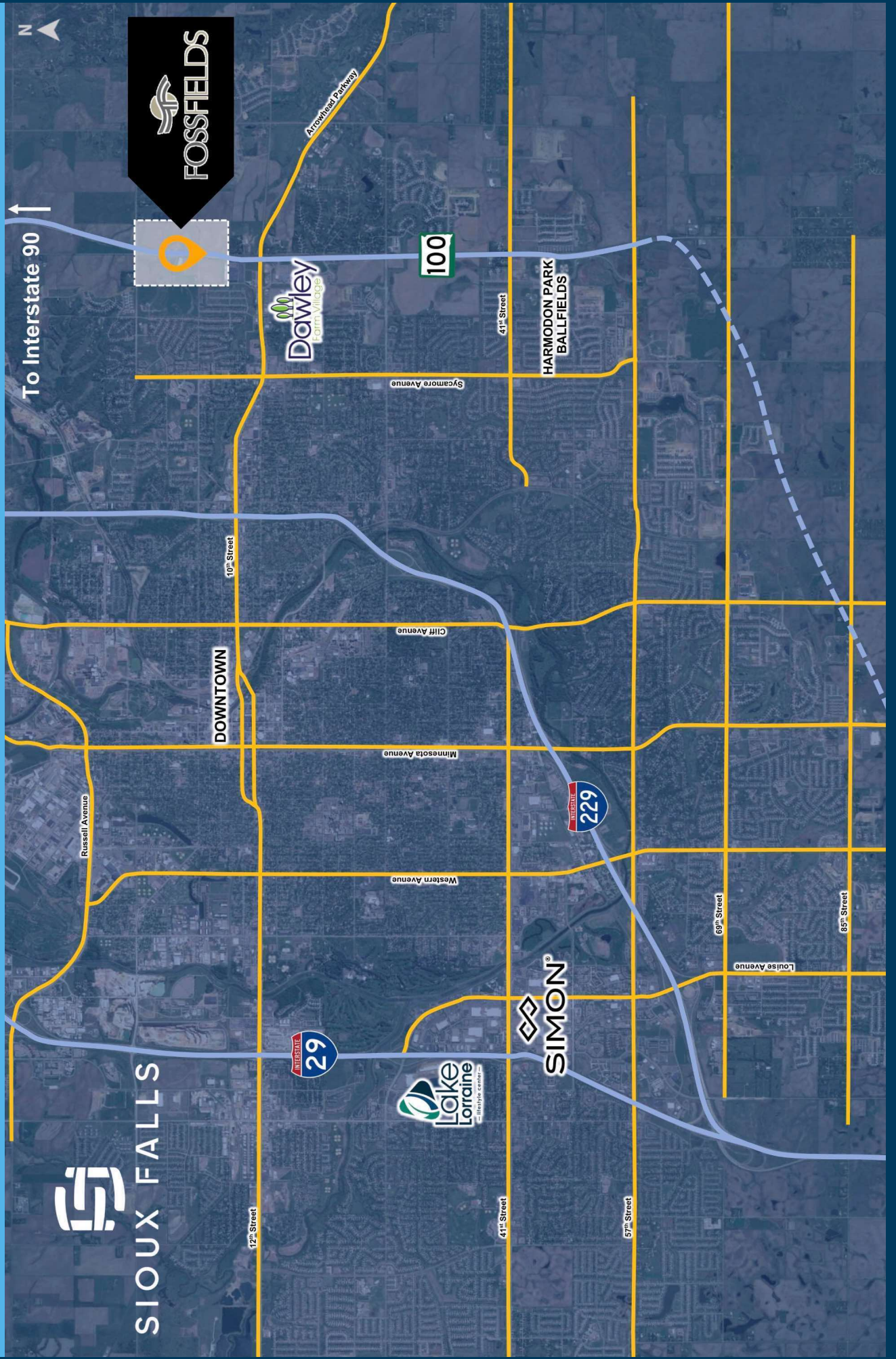
2571 South Westlake Drive #100 | Sioux Falls, South Dakota 57106



605.376.0127

Ryan@VBCLink.com

CITY MAP



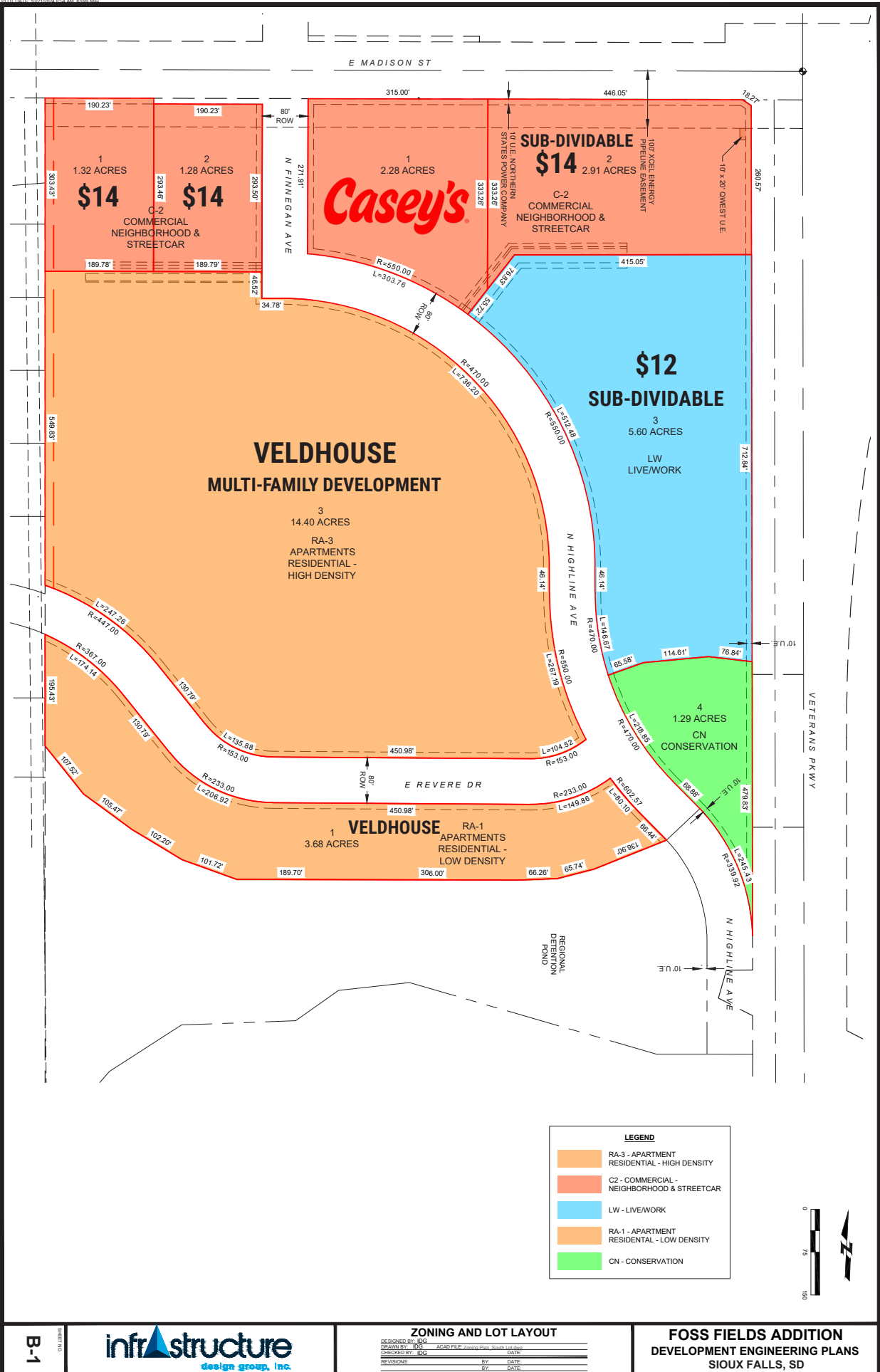
HIGHWAY 100 MAP



EASTSIDE RESIDENTIAL GROWTH IN PROGRESS



SITE PLAN PRICING



B-1



ZONING AND LOT LAYOUT

DESIGNED BY: RIG	DATE:
DRAWN BY: RIG	DATE:
CHECKED BY: RIG	DATE:
REVISIONS:	BY: DATE:

**FOSS FIELDS ADDITION
 DEVELOPMENT ENGINEERING PLANS
 SIOUX FALLS, SD**

SITE OVERVIEW

