



# BAKKER LANDING

Block 8 Land

## INTERSTATE 29, TEA EXIT

2100 Market Street | Tea, SD 57064



### SIZE

4 acres



### LOCATION

Bakker Landing Business Park, located along Interstate 29 at Tea Exit (Southwest Sioux Falls)



### CO-TENANCY

I-29 RV & Marine, Casey's, Starbucks, Taco John's, Thornton Flooring, Orthopedic Institute, Ideal Wedding & Events, GlassDoctor



### PRICE

\$7.95 per sq ft



### TRAFFIC

48,000 VPD (I-29)



### ZONING

C2 - Commercial

Information deemed reliable but not guaranteed.



**VBCLINK.COM**

2571 South Westlake Drive #100  
Sioux Falls, South Dakota 57106



**605.376.0127**

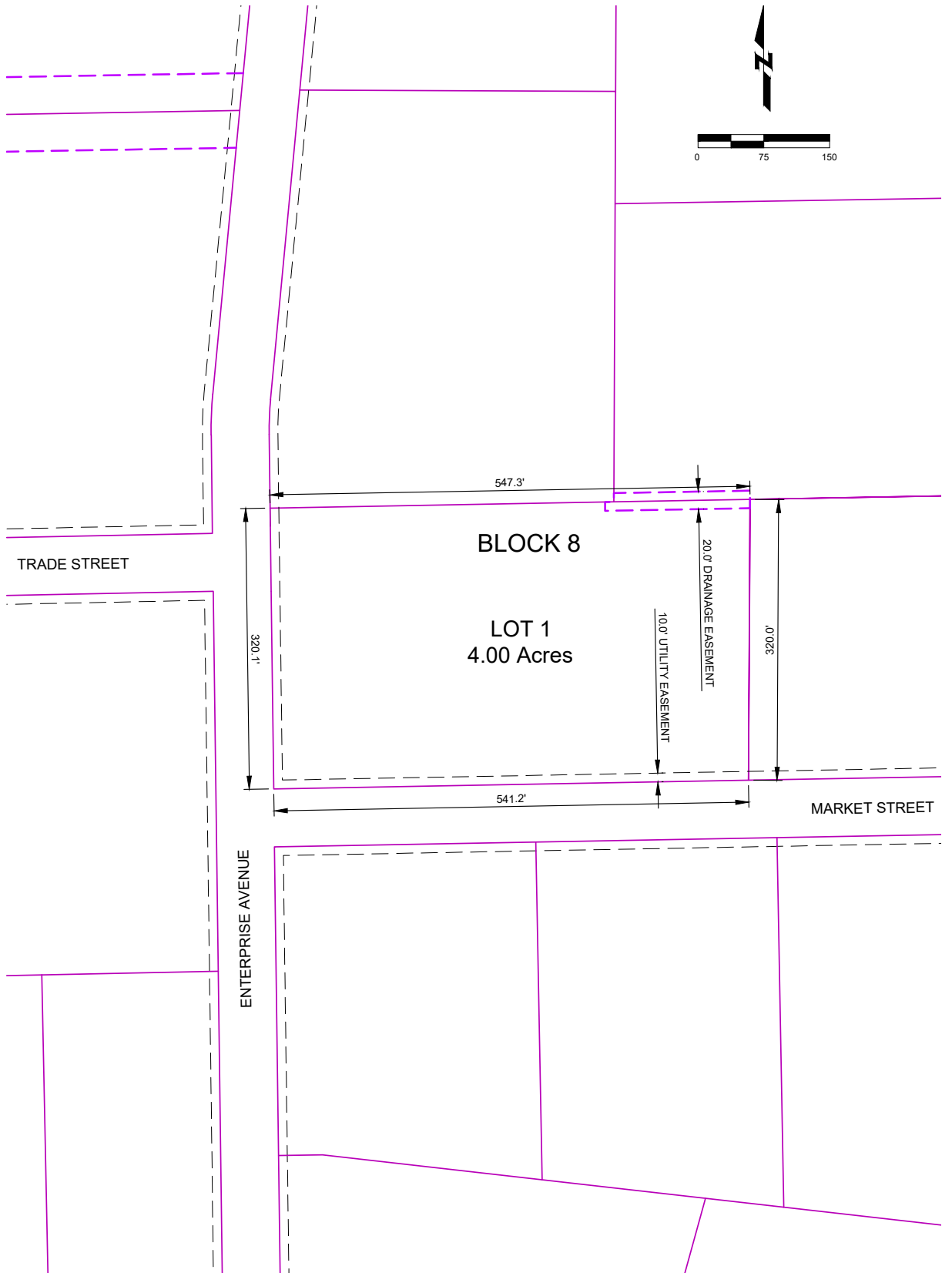
Ryan@VBCLink.com

# AREA MAP





# PARCEL EXHIBIT



# SITE OVERVIEW

