

SOUTH MINNESOTA AVENUE DEVELOPMENT LAND

HARRISBURG, SD

**FOR
SALE**

Harrisburg, SD

SOUTH MINNESOTA AVENUE / SD HWY 115

Sioux Falls, SD

DEVELOPMENT LAND FOR SALE between SIOUX FALLS and HARRISBURG



SIZE

37 +/- Acres.
Subdividable.



PRICE

\$45,000/Acre.



LOCATION

Property is located
along SD Hwy 115 /
Minnesota Avenue, just
north of Harrisburg,
SD.



TERRAIN

Flat



ZONING

Currently zoned
A-1/Agricultural.
Excellent visibility from
Minnesota Avenue!



SITE DELIVERY

As is.

Information deemed reliable but not guaranteed.



605.361.8211 | VBCcommercial.com

2571 S Westlake Dr #100 Sioux Falls SD 57106

STEVE
VAN BUSKIRK
605.366.0939
steve@vbclink.com

AERIAL IMAGE / AREA RETAILERS



605.361.8211 | VBCcommercial.com

2571 S Westlake Dr #100 Sioux Falls SD 57106

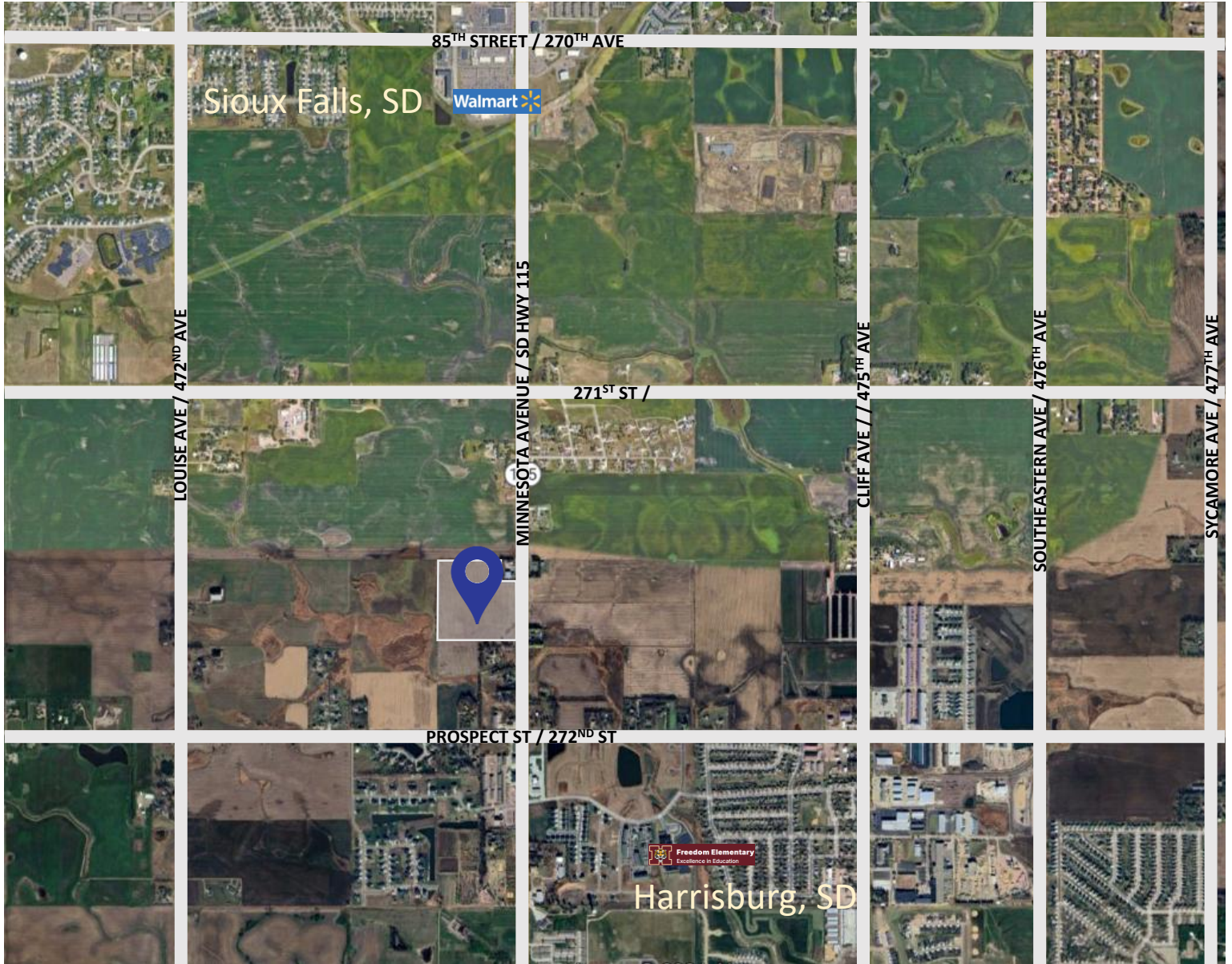
STEVE
VAN BUSKIRK

605.366.0939

steve@vbclink.com



LINCOLN COUNTY AERIAL IMAGE



605.361.8211 | VBCcommercial.com

2571 S Westlake Dr #100 Sioux Falls SD 57106

STEVE
VAN BUSKIRK
605.366.0939
steve@vbclink.com

AERIAL SITE PHOTOS

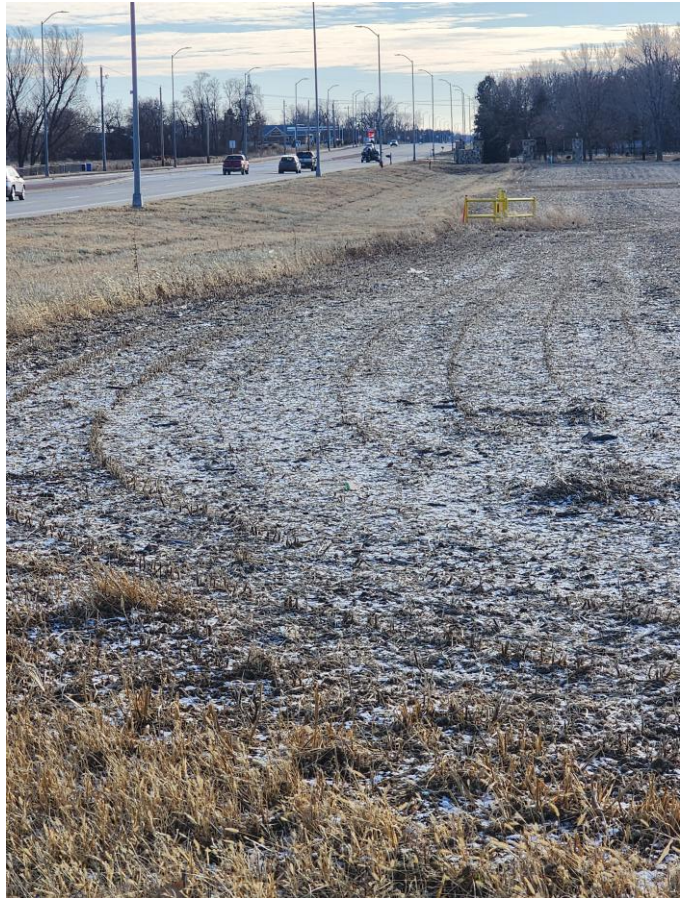


605.361.8211 | VBCcommercial.com

2571 S Westlake Dr #100 Sioux Falls SD 57106

STEVE
VAN BUSKIRK
605.366.0939
steve@vbclink.com

SITE PHOTOS



605.361.8211 | VBCcommercial.com

2571 S Westlake Dr #100 Sioux Falls SD 57106

STEVE
VAN BUSKIRK
605.366.0939
steve@vbclink.com

DEMOGRAPHICS: HARRISBURG, SD

KEY FACTS

2024 POPULATION: 10,539 (est.)



Between 2020 and 2023, the population of Harrisburg, SD grew by 37.8%, or more than 2,500 residents.

US Census Bureau & Population Report

EDUCATIONAL ATTAINMENT



EDUCATION ATTAINED	PERCENTAGE
9th to 12th Grade	0.62%
Associates Degree	15.22%
Bachelors Degree	32.83%
Graduate Degree	7.17%
High School Graduate	25.53%
Less Than 9th Grade	2.15%
Some College	16.48%

World Population Review

BUSINESS

Harrisburg is the fastest growing city in South Dakota. This growth has led to an increase in businesses in the area, including a coffee shop, gas station, and hotel. In 2023 the city spent \$12 million on enhancements that included



sewer line upgrades and more, and in 2024 will invest \$10 million in infrastructure improvements.

Siouxland Proud

EMPLOYMENT

Harrisburg's economy employs 4,280 people, with the largest industries being healthcare and social assistance, finance and insurance, and educational services. From 2021 to 2022, employment in Harrisburg grew at a rate of 15.3%. Currently, Harrisburg has an 88.5% labor force participation rate with a 0.8% unemployment rate.



World Population Review and SD Dept of Labor

INCOME and HOUSING



The largest share of households in Harrisburg, SD, have an income in the \$150k - \$200k range.

From 2020 through July 2024, Harrisburg has issued 641 residential building permits resulting in 477 new homes and 572 multi-family units.



Lincoln County, South Dakota

HOME OWNERSHIP



The rate of home ownership in Harrisburg is 85.1%. On average, homes in Harrisburg will sell after 32 days on the market. In August 2024, the median listing home price in Harrisburg was \$417.5k. The median listing home price per square foot was \$220.

Realtor.com



605.361.8211 | VBCcommercial.com

2571 S Westlake Dr #100 Sioux Falls SD 57106

STEVE
VAN BUSKIRK
605.366.0939
steve@vbclink.com