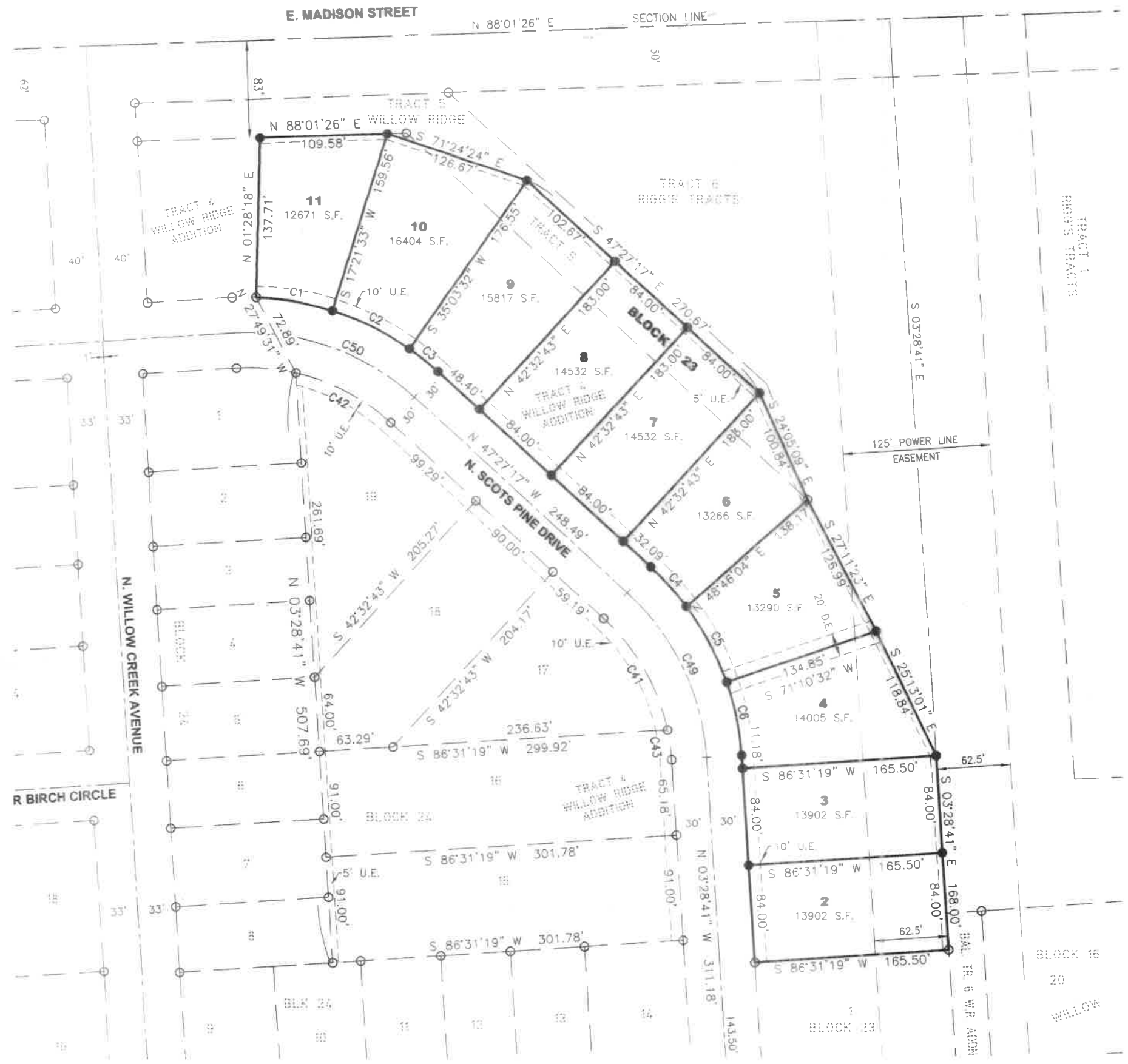


PLAT OF LOTS 2, 3, 4, 5, 6, 7, 8, 9, 10 AND 11 IN BLOCK 23 OF WILLOW RIDGE III ADDITION

AN ADDITION TO THE CITY OF SIOUX FALLS, MINNEHAHA COUNTY, SOUTH DAKOTA



AREA TABLE	
STREETS	0.00 AC. ±
LOTS	3.27 AC. ±
TOTAL	3.27 AC. ±

LEGEND:

- SET 5/8" REBAR W/CAP #6700
- FD. MONUMENT
- △ SECTION CORNER
- (M) MEASURED DISTANCE
- (R) RECORD INFORMATION
- AC. ACRES
- S.F. SQUARE FEET
- U.E. UTILITY EASEMENT
- D.E. DRAINAGE EASEMENT
- W.E. WATER EASEMENT
- S.C.A.E. SUMP COLLECTION ACCESS EASEMENT
- R/W RIGHT-OF-WAY
- N.T.S. NOT TO SCALE
- PREVIOUSLY PLATTED LINE
- - - EASEMENT LINE



NOTES:
BASIS OF BEARINGS IS UTM ZONE 14
THIS PLAT WAS PREPARED WITHOUT THE BENEFIT OF A TITLE COMMITMENT.

EASEMENTS OF RECORD WERE NOT RESEARCHED AND ARE NOT SHOWN ON THE PLAT.



211 E. 14th street, Sioux Falls, SD 57104 | Phone: (605) 339-8801

**PLAT OF LOTS 2, 3, 4, 5, 6, 7, 8, 9, 10 AND 11 IN BLOCK 23
OF WILLOW RIDGE III ADDITION**

AN ADDITION TO THE CITY OF SIOUX FALLS, MINNEHAHA COUNTY, SOUTH DAKOTA

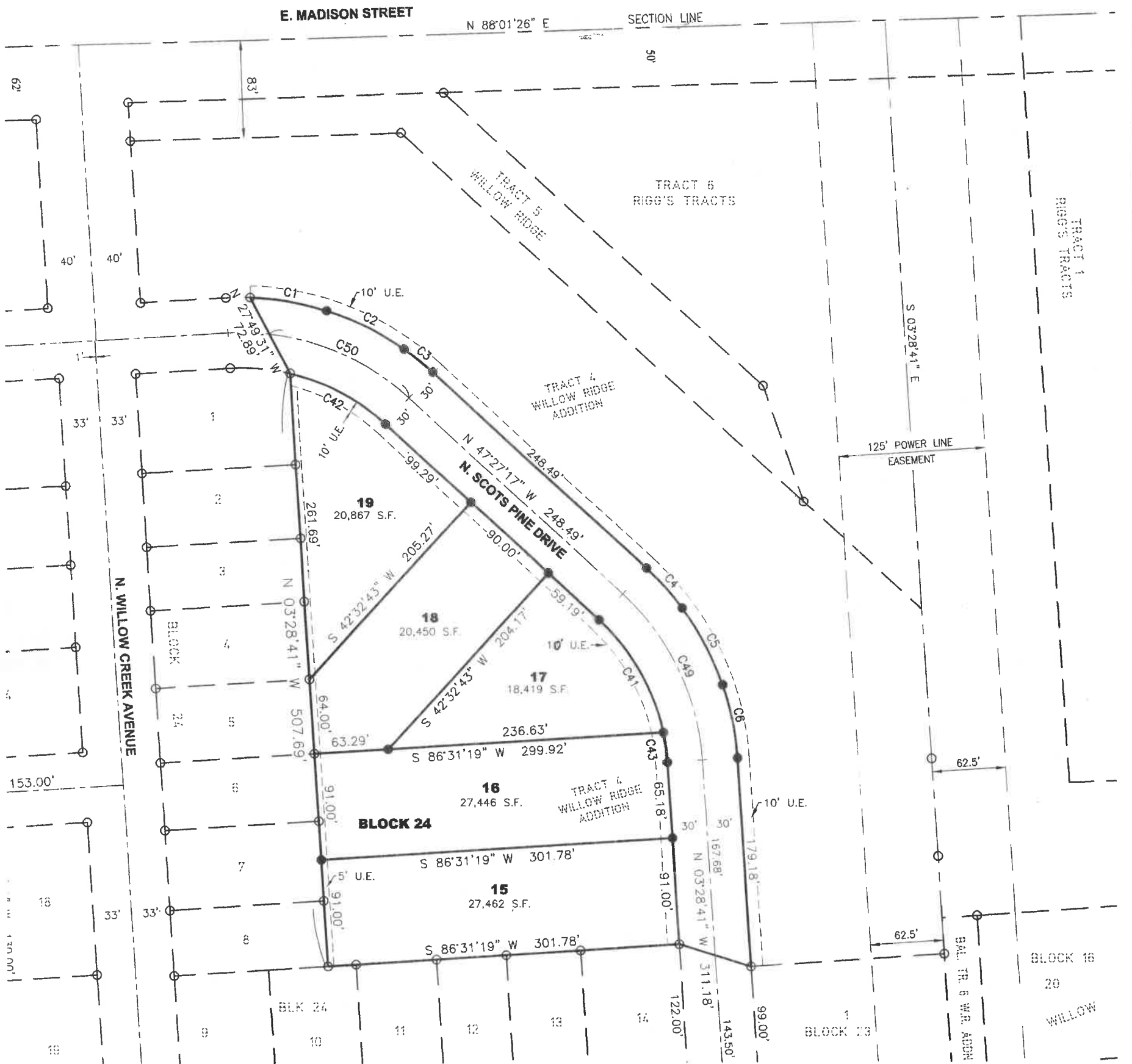
CURVE	RADIUS	ARC LENGTH	CHORD LENGTH	CHORD BEARING	DELTA ANGLE
C1	240.00'	66.55'	66.34'	S 80°35'04" E	15°53'15"
C2	240.00'	74.14'	73.85'	S 63°47'27" E	17°41'59"
C3	240.00'	31.36'	31.34'	S 51°11'53" E	7°29'10"
C4	240.00'	45.79'	45.72'	S 41°59'22" E	10°55'51"
C5	240.00'	74.14'	73.85'	S 27°40'27" E	17°41'59"
C6	240.00'	64.28'	64.09'	S 11°09'04" E	15°20'47"
C7	88.00'	9.30'	9.30'	N 89°33'02" E	6°03'25"
C8	88.00'	71.31'	69.38'	S 64°12'21" E	46°25'49"
C9	88.00'	57.62'	56.59'	S 22°14'04" E	37°30'46"
C10	67.00'	105.24'	94.75'	S 48°28'41" E	90°00'00"
C11	243.00'	46.84'	46.77'	S 87°57'20" E	11°02'42"
C12	243.00'	77.67'	77.34'	S 73°16'35" E	18°18'49"
C13	243.00'	77.67'	77.34'	S 54°57'45" E	18°18'49"
C14	243.00'	77.67'	77.34'	S 36°38'56" E	18°18'49"
C15	243.00'	77.67'	77.34'	S 18°20'06" E	18°18'49"
C16	243.00'	24.18'	24.17'	S 06°19'41" E	5°42'00"
C17	133.00'	69.59'	68.80'	S 11°30'41" W	29°58'43"
C18	25.00'	39.27'	35.36'	N 48°28'41" W	90°00'00"
C19	25.00'	39.27'	35.36'	N 41°31'19" E	90°00'00"
C20	85.00'	24.64'	24.56'	N 85°10'20" W	16°36'41"
C21	85.00'	63.56'	62.09'	N 55°26'45" W	42°50'31"
C22	85.00'	45.32'	44.78'	N 18°45'05" W	30°32'48"
C23	85.00'	45.66'	45.11'	N 11°54'36" E	30°46'35"
C24	85.00'	63.47'	62.01'	N 48°41'28" E	42°47'08"
C25	85.00'	24.39'	24.30'	N 78°18'10" E	16°26'18"
C26	60.00'	43.36'	42.43'	S 65°49'02" W	41°24'35"
C27	60.00'	20.62'	20.52'	S 54°57'30" W	19°41'31"
C28	60.00'	62.38'	59.61'	N 85°24'45" W	59°33'59"
C29	60.00'	54.61'	52.75'	N 29°33'13" W	52°09'05"
C30	60.00'	54.61'	52.75'	N 22°35'51" E	52°09'05"
C31	60.00'	62.38'	59.61'	N 78°27'24" E	59°33'59"
C32	60.00'	20.62'	20.52'	S 61°54'52" E	19°41'31"
C33	60.00'	43.36'	42.43'	S 72°46'24" E	41°24'35"
C34	177.00'	101.61'	100.22'	N 19°55'25" W	32°53'29"
C35	177.00'	176.42'	169.21'	N 64°55'25" W	57°06'31"
C36	133.00'	59.95'	59.44'	N 80°33'57" W	25°49'29"
C37	133.00'	70.65'	69.82'	N 52°26'06" W	30°26'13"
C38	133.00'	70.49'	69.67'	N 22°01'56" W	30°22'07"
C39	133.00'	7.82'	7.82'	N 05°09'47" W	3°22'11"
C40	22.00'	34.56'	31.11'	N 48°28'41" W	90°00'00"
C41	180.00'	112.25'	110.44'	N 29°35'22" W	35°43'51"
C42	180.00'	93.13'	92.09'	N 62°16'36" W	29°38'38"
C43	180.00'	25.91'	25.88'	N 07°36'04" W	8°14'45"
C44	55.00'	86.39'	77.78'	S 48°28'41" E	90°00'00"
C45	55.00'	86.39'	77.78'	S 41°31'19" W	90°00'00"
C46	55.00'	86.39'	77.78'	S 48°28'41" E	90°00'00"
C47	100.00'	157.08'	141.42'	S 48°28'41" E	90°00'00"
C48	210.00'	329.87'	296.98'	S 48°28'41" E	90°00'00"
C49	210.00'	161.18'	157.26'	N 25°27'59" W	43°58'37"
C50	210.00'	133.29'	131.07'	N 65°38'18" W	36°22'01"
C51	60.00'	26.54'	26.32'	N 80°48'29" W	25°20'25"
C52	60.00'	36.30'	35.74'	N 50°48'30" W	34°39'33"
C53	60.00'	52.04'	50.43'	N 58°19'35" W	49°41'45"
C54	60.00'	50.87'	49.36'	S 72°32'06" W	48°34'52"
C55	60.00'	47.23'	46.02'	S 25°41'30" W	45°06'20"
C56	60.00'	47.23'	46.02'	S 19°24'50" E	45°06'20"
C57	60.00'	47.23'	46.02'	S 64°31'10" E	45°06'20"
C58	60.00'	7.05'	7.05'	N 89°33'34" E	6°44'12"

LINE	BEARING	DISTANCE
L1	S 47°27'17" E	11.55'
L2	N 03°28'41" W	30.00'
L3	N 30°57'23" W	33.31'



PLAT OF LOTS 15, 16, 17, 18 AND 19 IN BLOCK 24 OF WILLOW RIDGE III ADDITION

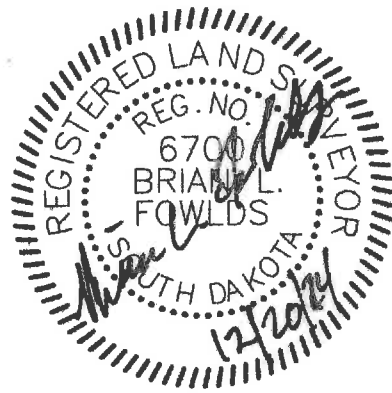
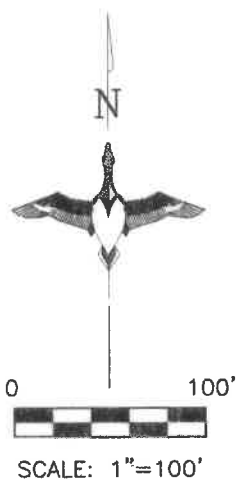
AN ADDITION TO THE CITY OF SIOUX FALLS, MINNEHAHA COUNTY, SOUTH DAKOTA



AREA TABLE	
STREETS	0.98 AC.±
LOTS	2.63 AC.±
TOTAL	3.61 AC.±

LEGEND:

- SET 5/8" REBAR W/CAP #6700
- FD. MONUMENT
- △ SECTION CORNER
- (M) MEASURED DISTANCE
- (R) RECORD INFORMATION
- AC. ACRES
- S.F. SQUARE FEET
- U.E. UTILITY EASEMENT
- D.E. DRAINAGE EASEMENT
- W.E. WATER EASEMENT
- S.C.A.E. SUMP COLLECTION ACCESS EASEMENT
- R/W RIGHT-OF-WAY
- N.T.S. NOT TO SCALE
- - - PREVIOUSLY PLATTED LINE
- - - EASEMENT LINE



NOTES:
 BASIS OF BEARINGS IS UTM ZONE 14
 THIS PLAT WAS PREPARED WITHOUT THE BENEFIT OF A TITLE COMMITMENT.
 EASEMENTS OF RECORD WERE NOT RESEARCHED AND ARE NOT SHOWN ON THE PLAT.



211 E. 14th street, Sioux Falls, SD 57104 | Phone: (605) 339-8901

PLAT OF LOTS 15, 16, 17, 18 AND 19 IN BLOCK 24 OF WILLOW RIDGE III ADDITION

AN ADDITION TO THE CITY OF SIOUX FALLS, MINNEHAHA COUNTY, SOUTH DAKOTA

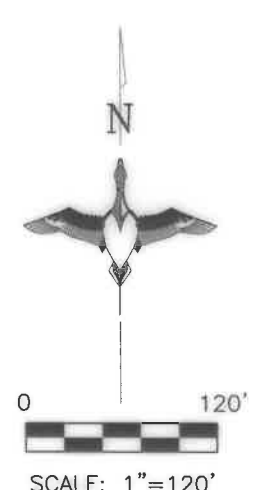
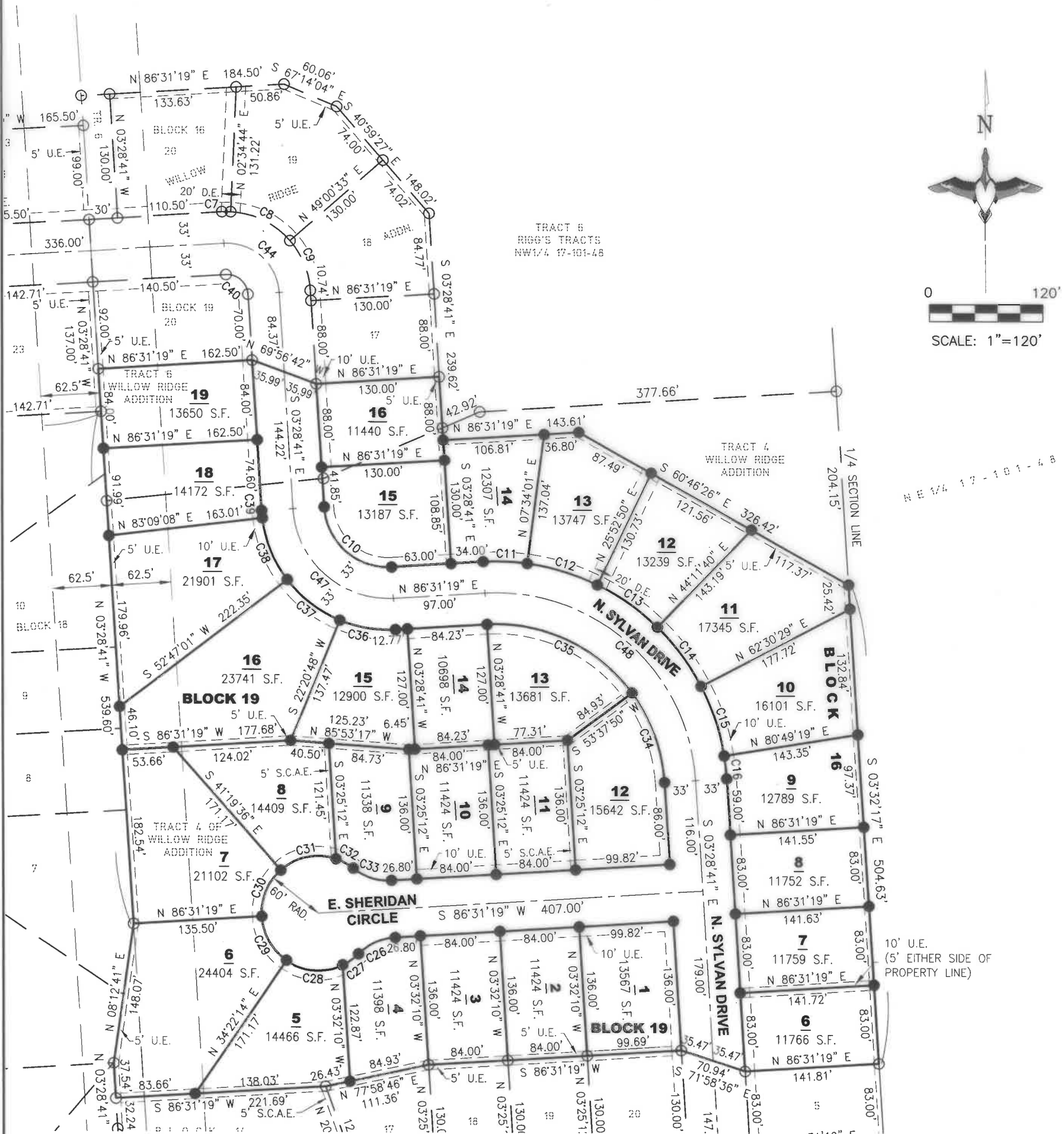
CURVE	RADIUS	ARC LENGTH	CHORD LENGTH	CHORD BEARING	DELTA ANGLE
C1	240.00'	66.55'	66.34'	S 80°35'04" E	15°53'15"
C2	240.00'	74.14'	73.85'	S 63°47'27" E	17°41'59"
C3	240.00'	31.36'	31.34'	S 51°11'53" E	7°29'10"
C4	240.00'	45.79'	45.72'	S 41°59'22" E	10°55'51"
C5	240.00'	74.14'	73.85'	S 27°40'27" E	17°41'59"
C6	240.00'	64.28'	64.09'	S 11°09'04" E	15°20'47"
C7	88.00'	9.30'	9.30'	N 89°33'02" E	6°03'25"
C8	88.00'	71.31'	69.38'	S 64°12'21" E	46°25'49"
C9	88.00'	57.62'	56.59'	S 22°14'04" E	37°30'46"
C10	67.00'	105.24'	94.75'	S 48°28'41" E	90°00'00"
C11	243.00'	46.84'	46.77'	S 87°57'20" E	11°02'42"
C12	243.00'	77.67'	77.34'	S 73°16'35" E	18°18'49"
C13	243.00'	77.67'	77.34'	S 54°57'45" E	18°18'49"
C14	243.00'	77.67'	77.34'	S 36°38'56" E	18°18'49"
C15	243.00'	77.67'	77.34'	S 18°20'06" E	18°18'49"
C16	243.00'	24.18'	24.17'	S 06°19'41" E	5°42'00"
C17	133.00'	69.59'	68.80'	S 11°30'41" W	29°58'43"
C18	25.00'	39.27'	35.36'	N 48°28'41" W	90°00'00"
C19	25.00'	39.27'	35.36'	N 41°31'19" E	90°00'00"
C20	85.00'	24.64'	24.56'	N 85°10'20" W	16°36'41"
C21	85.00'	63.56'	62.09'	N 55°26'45" W	42°50'31"
C22	85.00'	45.32'	44.78'	N 18°45'05" W	30°32'48"
C23	85.00'	45.66'	45.11'	N 11°54'36" E	30°46'35"
C24	85.00'	63.47'	62.01'	N 48°41'28" E	42°47'08"
C25	85.00'	24.39'	24.30'	N 78°18'10" E	16°26'18"
C26	60.00'	43.36'	42.43'	S 65°49'02" W	41°24'35"
C27	60.00'	20.62'	20.52'	S 54°57'30" W	19°41'31"
C28	60.00'	62.38'	59.61'	N 85°24'45" W	59°33'59"
C29	60.00'	54.61'	52.75'	N 29°33'13" W	52°09'05"
C30	60.00'	54.61'	52.75'	N 22°35'51" E	52°09'05"
C31	60.00'	62.38'	59.61'	N 78°27'24" E	59°33'59"
C32	60.00'	20.62'	20.52'	S 61°54'52" E	19°41'31"
C33	60.00'	43.36'	42.43'	S 72°46'24" E	41°24'35"
C34	177.00'	101.61'	100.22'	N 19°55'25" W	32°53'29"
C35	177.00'	176.42'	169.21'	N 64°55'25" W	57°06'31"
C36	133.00'	59.95'	59.44'	N 80°33'57" W	25°49'29"
C37	133.00'	70.65'	69.82'	N 52°26'06" W	30°26'13"
C38	133.00'	70.49'	69.67'	N 22°01'56" W	30°22'07"
C39	133.00'	7.82'	7.82'	N 05°09'47" W	3°22'11"
C40	22.00'	34.56'	31.11'	N 48°28'41" W	90°00'00"
C41	180.00'	112.25'	110.44'	N 29°35'22" W	35°43'51"
C42	180.00'	93.13'	92.09'	N 62°16'36" W	29°38'38"
C43	180.00'	25.91'	25.88'	N 07°36'04" W	8°14'45"
C44	55.00'	86.39'	77.78'	S 48°28'41" E	90°00'00"
C45	55.00'	86.39'	77.78'	S 41°31'19" W	90°00'00"
C46	55.00'	86.39'	77.78'	S 48°28'41" E	90°00'00"
C47	100.00'	157.08'	141.42'	S 48°28'41" E	90°00'00"
C48	210.00'	329.87'	296.98'	S 48°28'41" E	90°00'00"
C49	210.00'	161.18'	157.26'	N 25°27'59" W	43°58'37"
C50	210.00'	133.29'	131.07'	N 65°38'18" W	36°22'01"
C51	60.00'	26.54'	26.32'	N 80°48'29" W	25°20'25"
C52	60.00'	36.30'	35.74'	N 50°48'30" W	34°39'33"
C53	60.00'	52.04'	50.43'	N 58°19'35" W	49°41'45"
C54	60.00'	50.87'	49.36'	S 72°32'06" W	48°34'52"
C55	60.00'	47.23'	46.02'	S 25°41'30" W	45°06'20"
C56	60.00'	47.23'	46.02'	S 19°24'50" E	45°06'20"
C57	60.00'	47.23'	46.02'	S 64°31'10" E	45°06'20"
C58	60.00'	7.05'	7.05'	N 89°33'34" E	6°44'12"

LINE	BEARING	DISTANCE
L1	S 47°27'17" E	11.55'
L2	N 03°28'41" W	30.00'
L3	N 30°57'23" W	33.31'



PLAT OF LOTS 6, 7, 8, 9, 10, 11, 12, 13, 14, 15 AND 16 IN BLOCK 16 AND LOT 1, 2, 3, 4, 5, 6, 7, 8, 9, 10, 11, 12, 13, 14, 15, 16, 17, 18 AND 19 IN BLOCK 19 OF WILLOW RIDGE III ADDITION

AN ADDITION TO THE CITY OF SIOUX FALLS, MINNEHAHA COUNTY, SOUTH DAKOTA



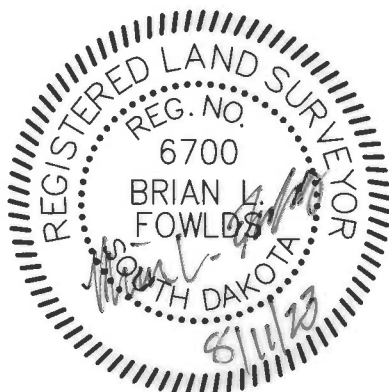
AREA TABLE	
STREETS	2.25 AC.±
LOTS	9.83 AC.±
TOTAL	12.08 AC.±

LEGEND:

- SET 5/8" REBAR W/CAP #6700
- FD. MONUMENT
- △ SECTION CORNER
- (M) MEASURED DISTANCE
- (R) RECORD INFORMATION
- AC. ACRES
- S.F. SQUARE FEET
- U.E. UTILITY EASEMENT
- D.E. DRAINAGE EASEMENT
- W.E. WATER EASEMENT
- S.C.A.E. SUMP COLLECTION ACCESS EASEMENT
- R/W RIGHT-OF-WAY
- N.T.S. NOT TO SCALE
- PREVIOUSLY PLATTED LINE
- - - EASEMENT LINE

NOTES:

BASIS OF BEARINGS IS UTM ZONE 14
 THIS PLAT WAS PREPARED WITHOUT THE BENEFIT OF A TITLE COMMITMENT.
 EASEMENTS OF RECORD WERE NOT RESEARCHED AND ARE NOT SHOWN ON THE PLAT.



PREPARED BY:

Midwest Land Surveying, Inc.
 Land Surveying and GPS Consulting
 211 E. 14th Street Suite 100
 Sioux Falls, South Dakota 57104
 Phone: (605) 339-8901 FAX: (605) 274-8951

SITE



VICINITY MAP
 CITY OF SIOUX FALLS

**PLAT OF LOTS 6, 7, 8, 9, 10, 11, 12, 13, 14, 15 AND 16 IN BLOCK 16 AND LOT
1, 2, 3, 4, 5, 6, 7, 8, 9, 10, 11, 12, 13, 14, 15, 16, 17, 18 AND 19 IN BLOCK 19 OF
WILLOW RIDGE III ADDITION**

AN ADDITION TO THE CITY OF SIOUX FALLS, MINNEHAHA COUNTY, SOUTH DAKOTA

CURVE	RADIUS	ARC LENGTH	CHORD LENGTH	CHORD BEARING	DELTA ANGLE
C1	240.00'	66.55'	66.34'	S 80°35'04" E	15°53'15"
C2	240.00'	74.14'	73.85'	S 63°47'27" E	17°41'59"
C3	240.00'	31.36'	31.34'	S 51°11'53" E	7°29'10"
C4	240.00'	45.79'	45.72'	S 41°59'22" E	10°55'51"
C5	240.00'	74.14'	73.85'	S 27°40'27" E	17°41'59"
C6	240.00'	64.28'	64.09'	S 11°09'04" E	15°20'47"
C7	88.00'	9.30'	9.30'	N 89°33'02" E	6°03'25"
C8	88.00'	71.31'	69.38'	S 64°12'21" E	46°25'49"
C9	88.00'	57.62'	56.59'	S 22°14'04" E	37°30'46"
C10	67.00'	105.24'	94.75'	S 48°28'41" E	90°00'00"
C11	243.00'	46.84'	46.77'	S 87°57'20" E	11°02'42"
C12	243.00'	77.67'	77.34'	S 73°16'35" E	18°18'49"
C13	243.00'	77.67'	77.34'	S 54°57'45" E	18°18'49"
C14	243.00'	77.67'	77.34'	S 36°38'56" E	18°18'49"
C15	243.00'	77.67'	77.34'	S 18°20'06" E	18°18'49"
C16	243.00'	24.18'	24.17'	S 06°19'41" E	5°42'00"
C17	133.00'	69.59'	68.80'	S 11°30'41" W	29°58'43"
C18	25.00'	39.27'	35.36'	N 48°28'41" W	90°00'00"
C19	25.00'	39.27'	35.36'	N 41°31'19" E	90°00'00"
C20	85.00'	24.64'	24.56'	N 85°10'20" W	16°36'41"
C21	85.00'	63.56'	62.09'	N 55°26'45" W	42°50'31"
C22	85.00'	45.32'	44.78'	N 18°45'05" W	30°32'48"
C23	85.00'	45.66'	45.11'	N 11°54'36" E	30°46'35"
C24	85.00'	63.47'	62.01'	N 48°41'28" E	42°47'08"
C25	85.00'	24.39'	24.30'	N 78°18'10" E	16°26'18"
C26	60.00'	43.36'	42.43'	S 65°49'02" W	41°24'35"
C27	60.00'	20.62'	20.52'	S 54°57'30" W	19°41'31"
C28	60.00'	62.38'	59.61'	N 85°24'45" W	59°33'59"
C29	60.00'	54.61'	52.75'	N 29°33'13" W	52°09'05"
C30	60.00'	54.61'	52.75'	N 22°35'51" E	52°09'05"
C31	60.00'	62.38'	59.61'	N 78°27'24" E	59°33'59"
C32	60.00'	20.62'	20.52'	S 61°54'52" E	19°41'31"
C33	60.00'	43.36'	42.43'	S 72°46'24" E	41°24'35"
C34	177.00'	101.61'	100.22'	N 19°55'25" W	32°53'29"
C35	177.00'	176.42'	169.21'	N 64°55'25" W	57°06'31"
C36	133.00'	59.95'	59.44'	N 80°33'57" W	25°49'29"
C37	133.00'	70.65'	69.82'	N 52°26'06" W	30°26'13"
C38	133.00'	70.49'	69.67'	N 22°01'56" W	30°22'07"
C39	133.00'	7.82'	7.82'	N 05°09'47" W	3°22'11"
C40	22.00'	34.56'	31.11'	N 48°28'41" W	90°00'00"
C41	180.00'	112.25'	110.44'	N 29°35'22" W	35°43'51"
C42	180.00'	93.13'	92.09'	N 62°16'36" W	29°38'38"
C43	180.00'	25.91'	25.88'	N 07°36'04" W	8°14'45"
C44	55.00'	86.39'	77.78'	S 48°28'41" E	90°00'00"
C45	55.00'	86.39'	77.78'	S 41°31'19" W	90°00'00"
C46	55.00'	86.39'	77.78'	S 48°28'41" E	90°00'00"
C47	100.00'	157.08'	141.42'	S 48°28'41" E	90°00'00"
C48	210.00'	329.87'	296.98'	S 48°28'41" E	90°00'00"

PREPARED BY:



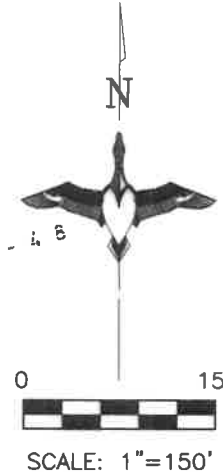
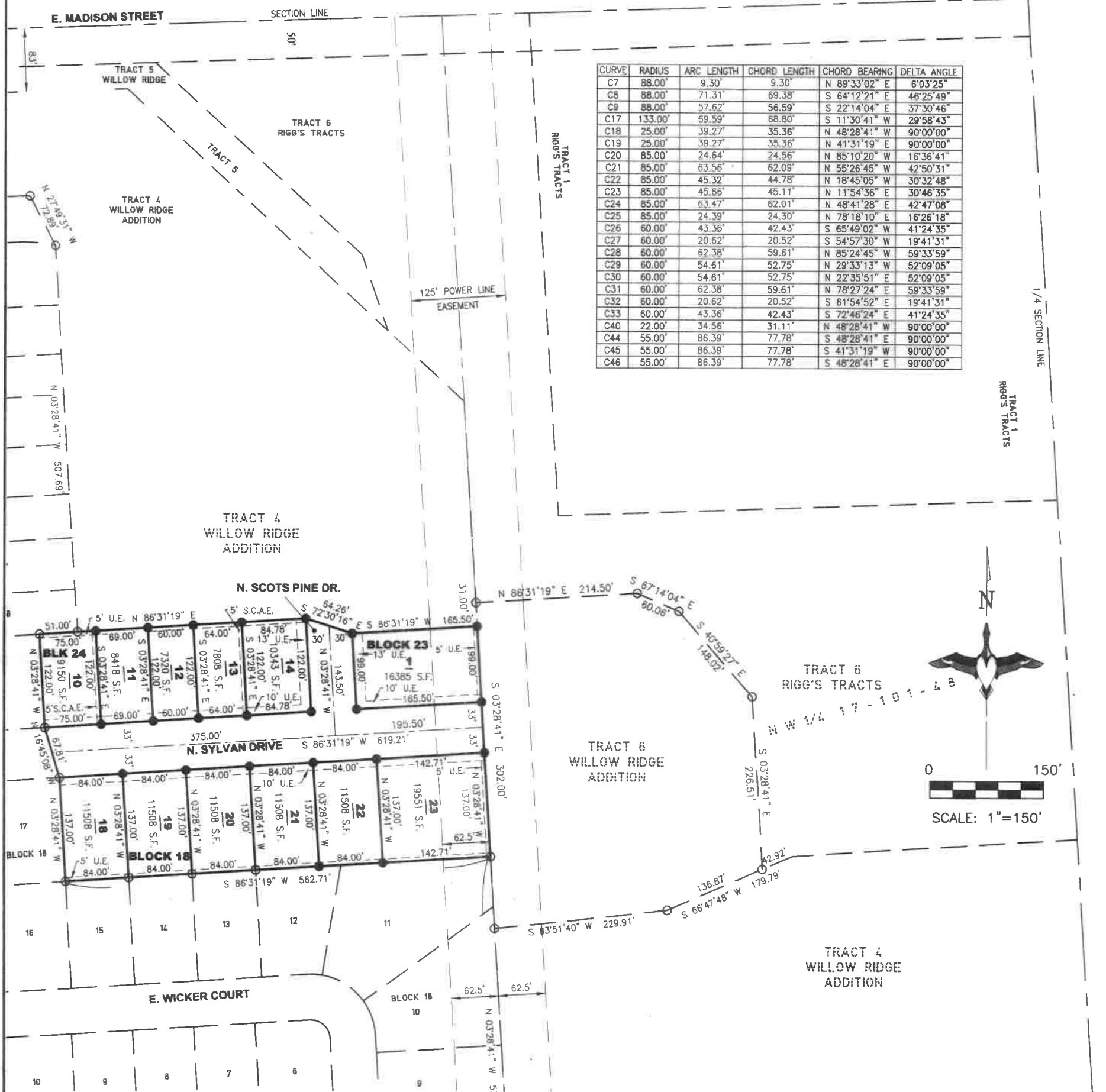
Land Surveying and GPS Consulting
211 E. 14th Street Suite 100
Sioux Falls, South Dakota 57104

Phone: (605) 339-8901 FAX:(605) 274-8951

PLAT OF LOTS 25, 26 AND 27 IN BLOCK 11; LOTS 7, 8, 9, 10, 11, 12, 13, 14, 15, 16, 17, 18, 19 AND 20 IN BLOCK 14; LOTS 1, 2, 3, 4, 5, 6, 7 AND 8 IN BLOCK 15; LOTS 1, 2, 3, 4, AND 5 IN BLOCK 16; LOTS 18, 19, 20, 21, 22 AND 23 IN BLOCK 18; LOT 1 IN BLOCK 23; LOTS 10, 11, 12, 13, AND 14 IN BLOCK 24; ALL OF WILLOW RIDGE III ADDITION

AN ADDITION TO THE CITY OF SIOUX FALLS, MINNEHAHA COUNTY, SOUTH DAKOTA

N1/4 CORNER
17-101-48



AREA TABLE	
STREETS	3.591 AC.±
LOTS	12.986 AC.±
TOTAL	16.577 AC.±

LEGEND:

- SET 5/8" REBAR W/CAP #6700
- FD. MONUMENT
- △ SECTION CORNER
- (M) MEASURED DISTANCE
- (R) RECORD INFORMATION
- AC. ACRES
- S.F. SQUARE FEET
- U.E. UTILITY EASEMENT
- D.E. DRAINAGE EASEMENT
- W.E. WATER EASEMENT
- S.C.A.E. SUMP COLLECTION ACCESS EASEMENT
- R/W RIGHT-OF-WAY
- N.T.S. NOT TO SCALE
- - - PREVIOUSLY PLATTED LINE
- - - EASEMENT LINE



PREPARED BY:

Midwest Land Surveying, Inc.
 Land Surveying and GPS Consulting
 211 E. 14th Street Suite 100
 Sioux Falls, South Dakota 57104
 Phone: (605) 339-8901 FAX: (605) 274-8951

SITE



VICINITY MAP
CITY OF SIOUX FALLS

NOTES:
BASIS OF BEARINGS IS UTM ZONE 14

THIS PLAT WAS PREPARED WITHOUT THE BENEFIT OF A TITLE COMMITMENT.

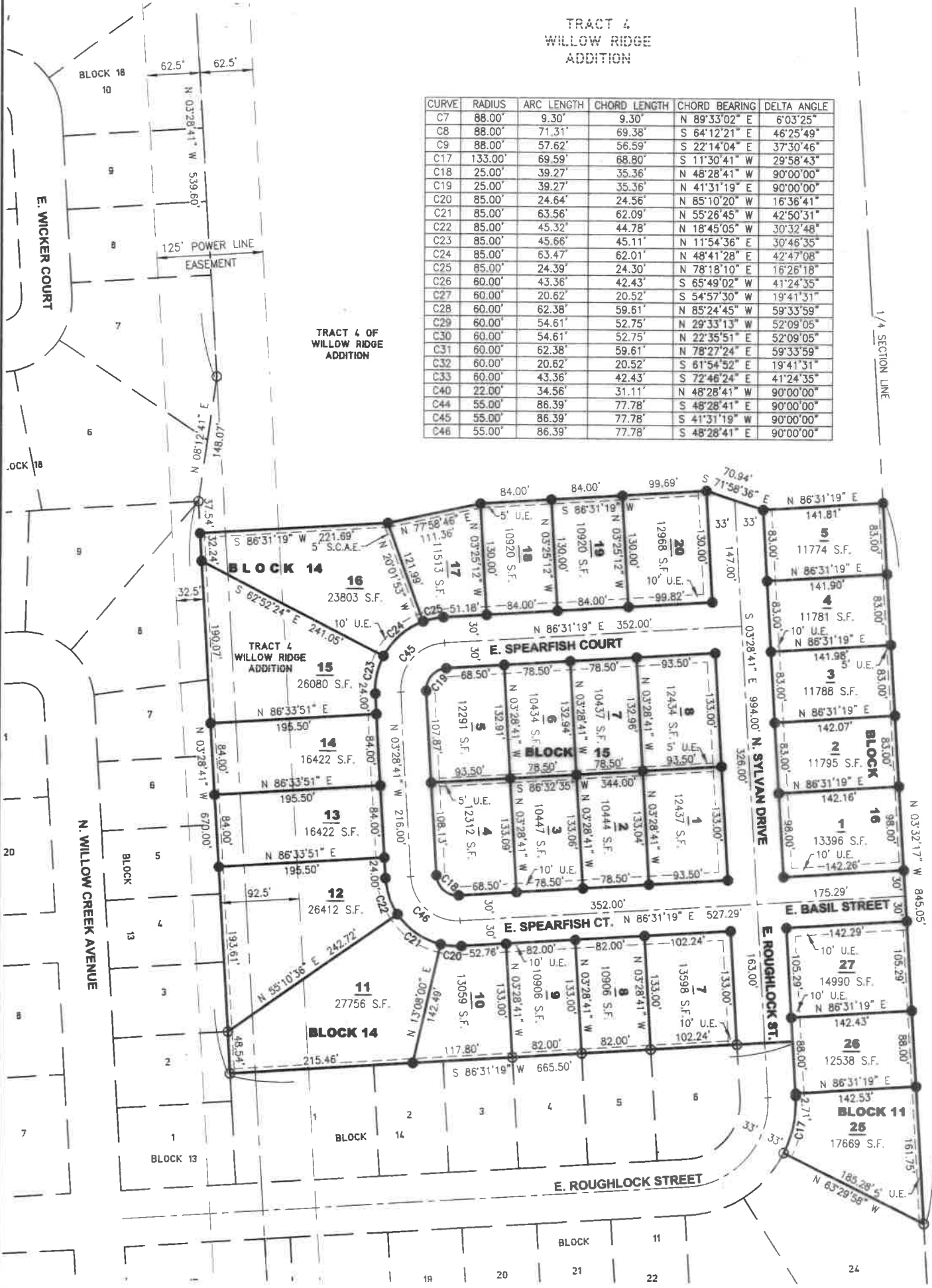
EASEMENTS OF RECORD WERE NOT RESEARCHED AND ARE NOT SHOWN ON THE PLAT.

PLAT OF LOTS 25, 26 AND 27 IN BLOCK 11; LOTS 7, 8, 9, 10, 11, 12, 13, 14, 15, 16, 17, 18, 19 AND 20 IN BLOCK 14; LOTS 1, 2, 3, 4, 5, 6, 7 AND 8 IN BLOCK 15; LOTS 1, 2, 3, 4, AND 5 IN BLOCK 16; LOTS 18, 19, 20, 21, 22 AND 23 IN BLOCK 18; LOT 1 IN BLOCK 23; LOTS 10, 11, 12, 13, AND 14 IN BLOCK 24; ALL OF WILLOW RIDGE III ADDITION

AN ADDITION TO THE CITY OF SIOUX FALLS, MINNEHAHA COUNTY, SOUTH DAKOTA

TRACT 4
WILLOW RIDGE
ADDITION

CURVE	RADIUS	ARC LENGTH	CHORD LENGTH	CHORD BEARING	DELTA ANGLE
C7	88.00'	9.30'	9.30'	N 89°33'02" E	6°03'25"
C8	88.00'	71.31'	69.38'	S 64°12'21" E	46°25'49"
C9	88.00'	57.62'	56.59'	S 22°14'04" E	37°30'46"
C17	133.00'	69.59'	68.80'	S 11°30'41" W	29°58'43"
C18	25.00'	39.27'	35.36'	N 48°28'41" W	90°00'00"
C19	25.00'	39.27'	35.36'	N 41°31'19" E	90°00'00"
C20	85.00'	24.64'	24.56'	N 85°10'20" W	16°36'41"
C21	85.00'	63.56'	62.09'	N 55°26'45" W	42°50'31"
C22	85.00'	45.32'	44.78'	N 18°45'05" W	30°32'48"
C23	85.00'	45.66'	45.11'	N 11°54'36" E	30°46'35"
C24	85.00'	63.47'	62.01'	N 48°41'28" E	42°47'08"
C25	85.00'	24.39'	24.30'	N 78°18'10" E	16°26'18"
C26	60.00'	43.36'	42.43'	S 65°49'02" W	41°24'35"
C27	60.00'	20.62'	20.52'	S 54°57'30" W	19°41'31"
C28	60.00'	62.38'	59.61'	N 85°24'45" W	59°33'59"
C29	60.00'	54.61'	52.75'	N 29°33'13" W	52°09'05"
C30	60.00'	54.61'	52.75'	N 22°35'51" E	52°09'05"
C31	60.00'	62.38'	59.61'	N 78°27'24" E	59°33'59"
C32	60.00'	20.62'	20.52'	S 61°54'52" E	19°41'31"
C33	60.00'	43.36'	42.43'	S 72°46'24" E	41°24'35"
C40	22.00'	34.56'	31.11'	N 48°28'41" W	90°00'00"
C44	55.00'	86.39'	77.78'	S 48°28'41" E	90°00'00"
C45	55.00'	86.39'	77.78'	S 41°31'19" W	90°00'00"
C46	55.00'	86.39'	77.78'	S 48°28'41" E	90°00'00"



LEGEND:

- SET 5/8" REBAR W/CAP #6700
- FD. MONUMENT
- △ SECTION CORNER
- (M) MEASURED DISTANCE
- (R) RECORD INFORMATION
- AC. ACRES
- S.F. SQUARE FEET
- U.E. UTILITY EASEMENT
- D.E. DRAINAGE EASEMENT
- W.E. WATER EASEMENT
- S.C.A.E. SUMP COLLECTION ACCESS EASEMENT
- R/W RIGHT-OF-WAY
- N.T.S. NOT TO SCALE
- PREVIOUSLY PLATTED LINE
- - - EASEMENT LINE

NOTES:

BASIS OF BEARINGS IS UTM ZONE 14
 THIS PLAT WAS PREPARED WITHOUT THE BENEFIT OF A TITLE COMMITMENT.
 EASEMENTS OF RECORD WERE NOT RESEARCHED AND ARE NOT SHOWN ON THE PLAT.



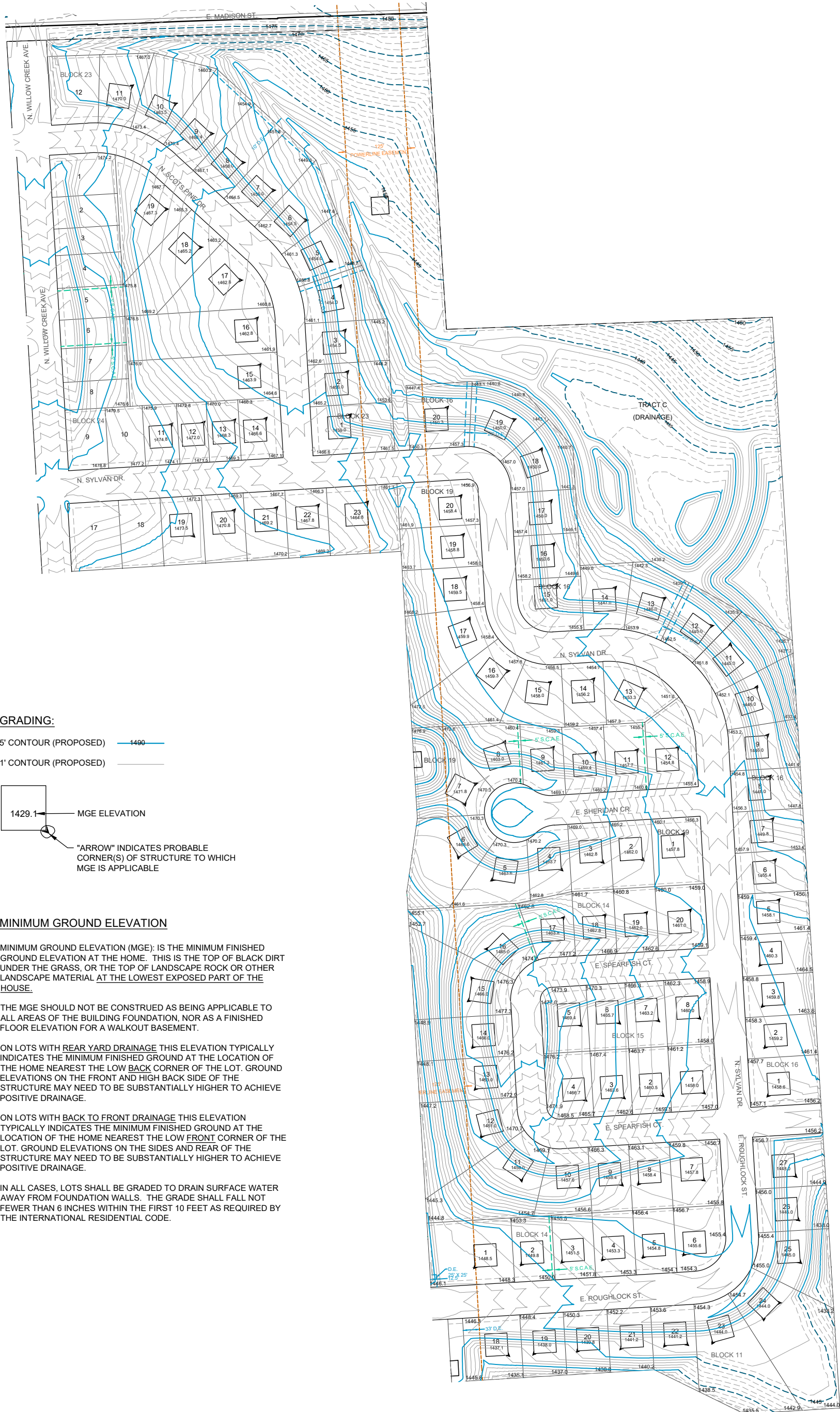
PREPARED BY:

Midwest Land Surveying, Inc.
 Land Surveying and GPS Consulting
 211 E. 14th Street Suite 100
 Sioux Falls, South Dakota 57104
 Phone: (605) 339-8901 FAX: (605) 274-8951

SITE

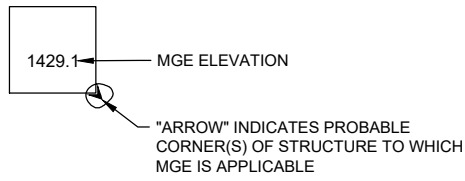


VICINITY MAP
CITY OF SIOUX FALLS



GRADING:

- 5' CONTOUR (PROPOSED) --- 1490
- 1' CONTOUR (PROPOSED) ---



MINIMUM GROUND ELEVATION

MINIMUM GROUND ELEVATION (MGE): IS THE MINIMUM FINISHED GROUND ELEVATION AT THE HOME. THIS IS THE TOP OF BLACK DIRT UNDER THE GRASS, OR THE TOP OF LANDSCAPE ROCK OR OTHER LANDSCAPE MATERIAL AT THE LOWEST EXPOSED PART OF THE HOUSE.

THE MGE SHOULD NOT BE CONSTRUED AS BEING APPLICABLE TO ALL AREAS OF THE BUILDING FOUNDATION, NOR AS A FINISHED FLOOR ELEVATION FOR A WALKOUT BASEMENT.

ON LOTS WITH REAR YARD DRAINAGE THIS ELEVATION TYPICALLY INDICATES THE MINIMUM FINISHED GROUND AT THE LOCATION OF THE HOME NEAREST THE LOW BACK CORNER OF THE LOT. GROUND ELEVATIONS ON THE FRONT AND HIGH BACK SIDE OF THE STRUCTURE MAY NEED TO BE SUBSTANTIALLY HIGHER TO ACHIEVE POSITIVE DRAINAGE.

ON LOTS WITH BACK TO FRONT DRAINAGE THIS ELEVATION TYPICALLY INDICATES THE MINIMUM FINISHED GROUND AT THE LOCATION OF THE HOME NEAREST THE LOW FRONT CORNER OF THE LOT. GROUND ELEVATIONS ON THE SIDES AND REAR OF THE STRUCTURE MAY NEED TO BE SUBSTANTIALLY HIGHER TO ACHIEVE POSITIVE DRAINAGE.

IN ALL CASES, LOTS SHALL BE GRADED TO DRAIN SURFACE WATER AWAY FROM FOUNDATION WALLS. THE GRADE SHALL FALL NOT FEWER THAN 6 INCHES WITHIN THE FIRST 10 FEET AS REQUIRED BY THE INTERNATIONAL RESIDENTIAL CODE.

