



THE JOHNSON BUILDING DOWNTOWN SIOUX FALLS

DOWNTOWN OFFICE/RETAIL SPACE

225 E 11th Street, Suite 105 | Sioux Falls, SD 57104



SIZE

1,505 sqft



PRICE

\$20.00 per sqft (NNN)



LOCATION

Newly renovated building in Downtown Sioux Falls on the corner of E. 11th Street and S. 2nd Avenue.



T.I.A.

\$40.00 per sqft



LAYOUT

Frontage shell space with an open floor plan and access from E 11th Street.



CO-TENANCY

2nd Avenue Salon Suites, Lenae Design, Evans Haigh & Arndt, 605 Running Co., Hireclick, The Cattitude Café, Preach-es, Sageworth Trust Co., ACE Hardware, BIN 201, USPS, Avera, Central Bus Station, The One2.

Information deemed reliable but not guaranteed.



VBCLINK.COM

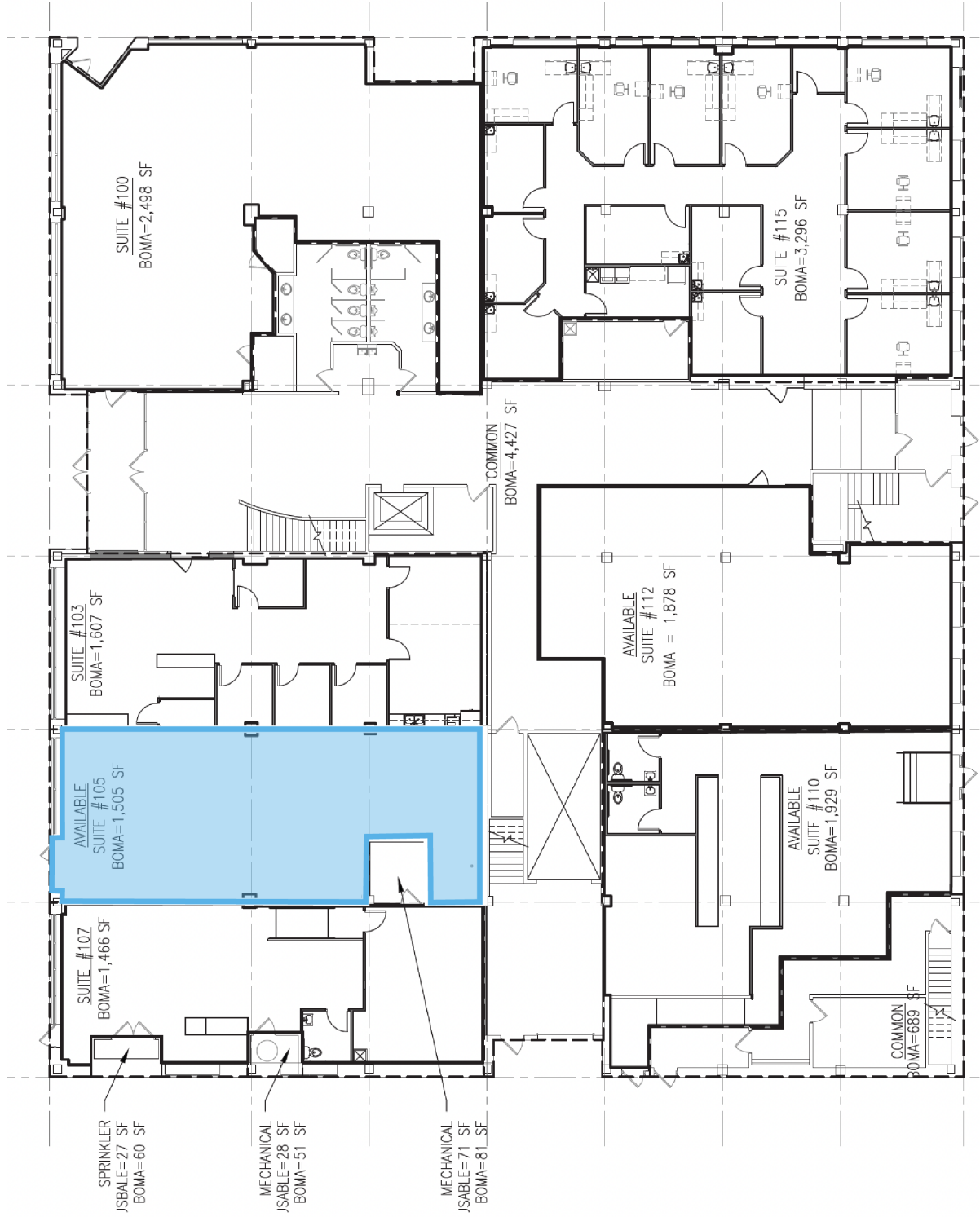
2571 Westlake Drive #100
Sioux Falls, South Dakota 57106



605.376.0127

Ryan@VBCLink.com

FLOOR PLAN



AREA RETAIL MAP



PHOTOS

